

The Bridge

NOVEMBER & DECEMBER 2022



www.bhcgodalming.org/thebridge

PRIOR'S FIELD

The place to achieve



GSA Girls' Boarding and Day School | 11-18, Godalming Surrey



THE PLACE TO ACHIEVE

“PRIOR'S FIELD CONSISTENTLY TURNS OUT A CONFIDENT SET OF GIRLS WHOSE 'SUCCESS STORIES AROUND... THIS IS A SCHOOL THAT REALLY FOCUSES ON NURTURING TALENT”
TATLER SCHOOLS GUIDE 2022

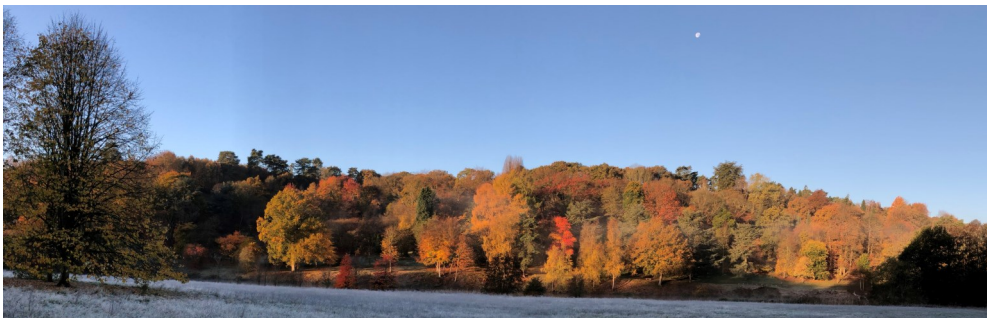
“PRIOR'S FIELD IS A SCHOOL WHERE THE SPIRIT IS CREATIVE AND ENTERPRISING - IT CHAMPIONS GIRLS' INDIVIDUAL TALENTS” GOOD SCHOOLS GUIDE 2022



Sixth Form Scholarships available for 2023 entry

For more information on our A Level options and dedicated Sixth Form House please contact our Admissions Team on 01483 813402

www.priorsfieldschool.com



FROM THE EDITOR

Welcome to the final 2022 edition of The Bridge magazine. As always, there are many community events in the lead up to Christmas and details can be found in this edition.

We also have an interview with the new Director of Children and Youth at Busbridge Church as well as exciting news of the Godalming Minster project.

David Brockman

Copy date for next edition is December 14

editor.atthebridge@gmail.com

Contents

- 4 A walk in the Riverside nature reserve in Guildford
- 6 A Word from Rev. Simon Taylor
- 9 Meet the new Director of Children and Youth at Busbridge Church
- 12 Christmas Craft
- 16 Godalming Minster news
- 18 Christmas services at Busbridge Church
- 24 Prime Time
- 27 Nexus News
- 28 Christmas recipe
- 33 Godalming Museum



Front cover: The river Wey in Godalming by David Brockman

Walk with the Bridge: Riverside Nature Reserve - Guildford

Have you ever sat on a dragonfly's wing? In your dreams? If you explore Riverside Nature Reserve, you can do so! Riverside is tucked in between the A3 and The Wey Navigation near Burpham and can be accessed from the car park at the end of Bowers Lane, GU4 7ND. It is a 30 hectare wildlife haven with a variety of habitats for mammals, birds, amphibians and insects - a lake, wetland, meadow and woodland - and has received a Green Flag award for excellence of management. This includes cattle grazing, mowing paths, removing invasive species and maintaining gravel paths and boardwalks so that most of the reserve is accessible to wheelchairs and mobility scooters without damaging fragile environments.

There's an ingenious bench beside the lake formed in the shape of a dragonfly and on the other benches are wonderful laser carvings of the local wildlife, fish and frogs, swallows and snails, butterflies and bulrushes (I mean reed mace, but it doesn't alliterate...)

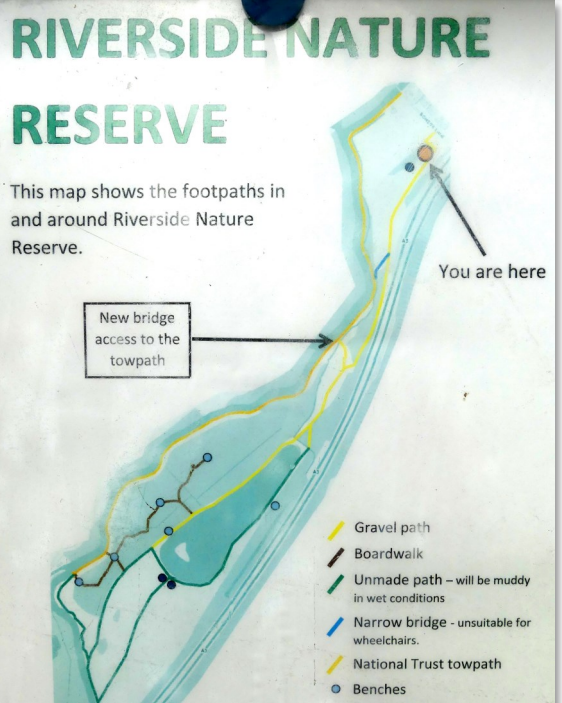
From the car park, a flat walk of just over 2 miles (3km) takes you into the reserve alongside the noisy A3 (behind the wood to your



left). Then you have a choice of continuing along the gravel track on the NW side of the lake or bearing left on a grassy path along the SE side. This may become muddy when wet, but it is where you will come across the dragonfly bench. At the far end of the lake is an unusual view of Guildford cathedral in the distance. Paths will take you on into Guildford from here, but exploring the boardwalks on the NW side of the lake is recommended. The summer flora here is varied and colourful - purple loosestrife and orange native balsam, for example.



A Prime Time outing took us here in September and we saw clusters of tufted duck and a splashing of mallards on the lake and several sorts of dragonfly zipping to and fro across a small pond. Unfortunately blue-green algae were in evidence. It made beautiful patterns in the water, but it is toxic to dogs and people, so best avoided. Step through the gate at the far end of the reserve and you may be able to watch a narrowboat negotiating Stoke Lock (see above). Walking back along the National Trust towpath with its ancient willows will take you through yet another environment. A pub lunch at the Anchor and Horseshoes will certainly set you up for the rest of the day!



Rev Simon Taylor: Changing Seasons

We're entering the season when the song of the birds will largely fall silent. It isn't the songs which have changed but our ability to hear them. We will not be hearing the sounds as we walk in the woods or drop children at school because the birds are singing their songs far away. The Manx shearwater will be singing in Argentina, the Arctic Tern makes its sounds in Antarctica and the willow warbler now warbles its voice 5,000 miles away in the African Spring.

Some birds remain in the UK and because they stay, if we listen, we can become attuned to the beauty of their voices. Our noises often drown this quieter sound from our ears.

Humanly, we each enter different seasons when there seems to be a silence of the soul. The noise of change, uncertainty or fear means that we no longer hear the beauty that we thought we knew so well. We are left with a season that seems to be silent and maybe even a place of desolation or emptiness.

The cause of the change of season is likely to be far beyond our control and there is a lesson from the birds in this as they adapt and migrate. We cannot keep living as if we only have one season of life, employment, God's creation or in any number of situations that you may be thinking of as you read this. Things are constantly changing around us, but we can be so used to drowning the changes out that we keep living as if this season will last forever and that we are in control of this. Accepting that seasons change means accepting loss, and loss is painful, but there is often a new light or we hear the sounds of life differently as we emerge into a new season.

Personally, I have entered a new season with some of my family growing up and moving away. As a community, we are in a different season to where we were a few years ago. As a church in Godalming and locally, we are entering a new season as Busbridge and Hambledon Church becomes an important part of a new venture we are calling Godalming Minster.

In these season changes, the song does not fall silent. The song continues and it may be healing and helpful to consider it as simply being in a different tone, a different place or a different volume. The song doesn't change because the Christian faith knows that the deepest song of the soul can be secure. The song of the soul is to seek the Lord and be renewed every morning as we head into this time of autumn and winter. The Psalms put it like this:

"Arise, my soul, and sing his praises! I will awaken the dawn with my worship, greeting the daybreak with my songs of light."

Why not spend a moment reading those beautiful words by taking them into your own soul for comfort and then listen carefully the next time you hear a quiet song of the birds.

Rev Simon Taylor





**Emery &
Orchard**
ESTATE AGENTS

Passionate about property

SINCE 1993



EMERY & ORCHARD

Godalming's **Local** Independent **Agent** **Established** for over **25** years.

Property to sell in Godalming or the Villages?

Then contact Tony Emery
or Jeremy Orchard on
01483 419 300
to arrange a
Free Market
Valuation.

20 High Street
Godalming
GU7 1EB

www.emery-orchard.co.uk



Ukraine



Please come to Busbridge Church on 20th November to meet some of our locally hosted Ukrainian families and to hear a talk about the war from a group of teenagers. The event is free and refreshments will be provided. Young people are particularly encouraged to support the event and there will be a range of appetizing refreshments to enjoy.

Sarah Black

@BHCODALMING #BHC4UKRAINE

YOUTH TALK

Young Ukrainians share their story

20 NOV | 6PM | BUSBRIDGE CHURCH



Saturday 19 November

Hundreds of churches, thousands of people, one big quiz

Join us and play your part in eliminating poverty at 7:30pm on 19th November at **Godalming Baptist church**. For more information contact catherine@lawtonfamily.net

GODALMING
BAPTIST CHURCH



Feast!

Walter:
Belshazzar's Feast
Vaughan Williams:
**The Lark Ascending
& Five Mystical Songs**

75
Vivace
Chorus

Saturday
19 Nov 2022
at 7.30pm

G Live
Guildford's state-of-the-art
entertainment venue

An interview with the new Director of Children and Youth at Busbridge Church—Ben Barnes

Ben Barnes has just started working at Busbridge church. David Brockman met him for a chat at the Yew Tree café to get to know him and found out more about how he sees his role.



David: Welcome —what is your role at Busbridge?

Ben: I have taken over from Anto as the Director of Children and Youth. I am responsible for all the 0-18s work, but my focus will be with the 11-18 age group.

David: What were you doing before you came to Busbridge?

Ben: I was working as Youth Pastor at St Paul's church Camberley and as a trustee for a Youth Work charity.

David: Tell us about your family.

Ben: I have been married to Sophia for eight years; our daughter Freya is five and has started at Busbridge infants and our son Kit is 14 months old.

David: How did you end up in youth work?

Ben: I went to a church when I was a teenager and was very grateful for the youth work there which helped change the course of my life. In my gap year I did some youth work then studied for a theology degree from the London School of Theology before doing a Masters in Youth and Community work with Applied Theology. I've since done a number of youth work roles and worked as a chaplain at a university.

David: When not working, how do you like to relax?

Ben: Obviously having a young family keeps us busy, but I like listening to books on Audible and going for walks - sometimes at the same time! I particularly enjoy books on leadership

and business. We also enjoy watching series such as Grey's Anatomy.

David: What are your first impressions of Busbridge?

Ben: It is really quiet! We have found that people are very welcoming and helpful and there is a great sense of community.

David: What is your vision for the youth work at Busbridge?

Ben: I want to build on the heritage of good youth work here. I am very aware of the impact of the Covid lockdowns on young people in terms of disruption to normal life and the associated impact on mental health. I love to work with young people to help them thrive and look forward to strengthening our existing groups and potentially starting new ones. I am here to listen to and serve young people - if you would like to be involved, support or share your ideas then please get in touch.

Ben can be contacted at ben.barnes@bhcgodalming.org

David Brockman

Busbridge Parish Register



Baptisms

28th August – Jonathan Josiah Wilson

25th September – Clara Evelyn Morris

Weddings

27th August – Victoria Robinson and Charlie Ford



Printed by **LINNERLAKE**

LITHO & DIGITAL PRINTERS

Established family business, based in Guildford with free delivery to Godalming. Leaflets, posters, booklets, order of services, wire bound books & more

www.linnerlake.co.uk

07590 047750

linnerlake@gmail.com

Appliance Service and Sales

- Repair of most main makes
- Built-in and Freestanding
- New appliances with installation
- * Built in and American F/F

Checkatrade.com
Where reputation matters

**Cooker/Oven
Dishwasher
Washing Machine
Tumble Dryer
Fridge/Freezer ***

Elstead (01252) 705198

www.applianceexpert.co.uk

Paul Clifford
Property Services
Qualified "Part P" Electrician
B-tec Trained Plumber
Electrical, Fuse Boards
Extra Sockets, LED Lighting

Fully Insured References Available

Paulclifford60@gmail.com 07889 073853

QUARRY HILL STORES

17 Quarry Hill



Paper Boys and Girls Required in Busbridge

Newspaper Delivery Service in Busbridge
Contact: Mr S. Patel

Tel: 01483 416938



**BELIEVE.
ACHIEVE.
SUCCEED.**

OPEN EVENTS

OPEN MORNINGS from 9.45am

Thursday 17th November 2022

Friday 3rd February 2023

ASSESSMENT DAY FOR (YEARS 1 - 6)

Tuesday 8th November 2022

prepadmissions@stcatherines.info



St Catherine's Prep, Bramley

GSA Day & Boarding School since 1885 | 4 - 18 years
Guildford GU5 0DF | www.stcatherines.info

Christmas Decorations

Here are some simple but effective decorations for you to make, to get you in the Christmas spirit in the run up to the festive period. Each decoration takes just a few minutes to make and after they've dried out, they can be hung up straight away - no paint required! Easy for any age to make and apart from clay, you might already have the other items. I was very pleased to use my Christmas cookie cutters which have sat in the cupboard for years!

You will need: Air dry clay, grease proof paper (for rolling out on and drying), a small rolling pin, a skewer, ribbon/string, cookie cutters and if you have them, craft stamps.

Roll out the clay on the grease proof paper to about 3mm, cut out your shapes and make a hole in the top with the skewer.

If you are attaching 3



Christmas Decorations



in a vertical line, the 1st and 2nd shapes will need a hole in the top and bottom. Use craft stamps to decorate, you have to press firmly. Then leave them on the grease proof paper to dry - mine take a bit longer than 24 hours to dry, but you can put them in the airing cupboard.



They can be hung on the Christmas Tree, on the wall or used as present decorations. Once dry, you can write on them - gold and silver pens work well.

To make a 'night light' decoration, I cut out a triangular shape, used a straw to make the circles, wrapped some grease proof paper around a small jar and wrapped the clay around it while it dried. Use a battery LED tea light inside.



Lorna Sherwin



**CHRISTMAS
OPENING**
19 - 23 DEC
10 AM - 4 PM
TAKEAWAY HATCH
TO 4.30 PM

CLOSED 24 DEC - 2 JAN
BUT THE YEWE TREE BUILDING
WILL BE OPEN AS A

WARM SPACE
10 AM - 2 PM
Wed 28 - Fri 30 Dec
BOARD GAMES &
FREE REFRESHMENTS



**QATAR 2022
WORLD CUP**



**WORLD CUP MATCHES
AT BUSBRIDGE CHURCH**

**BIG SCREEN | WARM SPACE
FREE REFRESHMENTS
FAMILY FRIENDLY
ALL INVITED!**

SHOWING GROUP STAGES - B
ENGLAND / IRAN 21 NOV 13:00
USA / WALES 21 NOV 19:00
WALES / IRAN 25 NOV 10:00
ENGLAND / USA 25 NOV 19:00
WALES / ENGLAND 29 NOV 19:00

**AND ENGLAND MATCHES IN
THE KNOCKOUT STAGES**

CHECK WWW.BHCGODALMING.ORG
busbridge&hambledonchurch



BUSBRIDGE

**WREATH
Project**

Beautiful and unique handmade wreaths using foraged greenery
ON SALE from 8 Dec at the Yew Tree Café
in aid of the Cellar Café

We need volunteers to chat over coffee and make the wreaths!
Workshop at Busbridge Church Weds 7 Dec, 9-12.
No experience necessary, instructions and guidance provided,
but space is limited.
Please sign up: www.bhcgodalming.org/wreaths




MULLARD

FUNERALS — GODALMING SINCE 1847

INDEPENDENT FUNERAL DIRECTORS
& MEMORIAL MASONS

- 24 Hour professional & personal service
- Pre paid & pre arranged funerals
- Private chapels of rest

01483 860279 • www.mullards.uk

121-123 High Street, Godalming
Surrey, GU7 1AG



Conservatoire Concerts

Conservatoire Concerts invite you to two concerts this month – the annual highlight of the Series, an evening of Baroque arias sung by the amazing countertenor João Paulo Ferreira, accompanied by piano and Fado Duo returns on the 5th of November. Then their Annual Chamber Music Festival commences on the 26th of November with a Brahms Programme of Piano Trio No. 1 and Piano Quartet No. 3. The Festival concludes on the 3rd of December with a Harp Duo. All these concerts will be held at Godalming Baptist Church at 7.00pm.

These concerts are FREE with a retiring collection towards musicians' fees and expenses. Booking via www.conservatoireconcerts.org.uk or by emailing suzanne.cacciottolo@gmail.com

COME AND EXPLORE OUR
WONDERFUL WOODLAND



NATURE BASED ACTIVITIES CHILDREN CAN ENJOY

- Different experiences every week
- Group games
- Lots of sensory play with mud kitchens and water runs
- Bug hunting
- Woods to explore, climb and get muddy in!

INFORMATION

Children attending must be steady on their feet. Sessions will take place in all weathers so please dress appropriately.

The cost is £2.50 per session including refreshments.

To register your interest please visit our website

www.longacreschool.co.uk

LITTLE FORESTERS

Parent & Toddler Group
Tuesdays 9:00-10:00am (term-time)
Longacre School, Hullbrook Lane, Shamley Green, GU5 0NQ

Reintroducing Godalming Minster



Busbridge Church

The vision for the new Minster is one of Christian growth and service across the Greater Godalming area, and there is a strategy and investment to ensure the benefits of working together and sharing resources are achieved.

As we all know, the present economic climate is increasingly challenging. The Godalming Minster will seek to help alleviate some of the concerns faced by the community through Christian love and direct help, and enable better use of our buildings and clergy across the Minster.

Busbridge, Hambledon, St Peter and St Paul's in Godalming and St Mark's Church at Ockford Ridge will all retain their existing stipendiary clergy. Most church services will remain essentially as they are now and evolve naturally, and more informal "contemporary" worship will be introduced in town. The Rev Simon Taylor will become Rector of

In October the decision was taken by the Church of England churches in Busbridge, Godalming and Hambledon to unite into a single Church of England parish and create the Godalming Minster. The term Minster is historical, harking back to the 7th Century when Tuesley was the site of a significant Anglo-Saxon Minster (monastery) which served Busbridge, Hambledon and Godalming, yet its reincarnation is anything but backward looking.



St Peter and St Paul's Church

Godalming Minster, responsible for strategic oversight and development. St. Peter and St. Paul's Church in the town centre will seek to become a civic hub with emphasis on closer engagement with the Town Council, local businesses and outreach to schools. The Busbridge 'Old Rectory' site will function as a 'community' hub with centralised administration, the Yew Tree Cafe, Youth work and much more. Hambledon church will



Hambledon Church

Reintroducing Godalming Minster

continue to retain its unique village presence in the Minster.

The Diocese of Guildford has been extremely supportive in this initiative, particularly by funding and housing a new longer term clergy position centred at St. Mark's, Ockford Ridge. It will also contribute significantly toward the development of worship and children's ministries across the Minster.



St Mark's Church (Ockford Ridge)

It takes time to legally merge three parishes so the Minster will not come into effect until the end of 2023. In the meantime, the churches of St. John the Baptist, Busbridge; St. Peter & St Paul, Godalming; St. Peter; Hambledon and St. Mark's Ockford Ridge will start to work together on events and activities to best serve everyone in the Godalming area.

Do come and visit any of our churches and learn more about the Minster!

Rev. Simon Taylor

Hugh Tanton GARDEN DESIGN

Garden Design & Landscaping Solutions
From a Qualified Professional

- Garden Design
- Border Rejuvenation
- Planting Plans
- Solutions to Problem Areas
- Planting and Landscaping
- Friendly Advice and New Ideas

T: 01403 713 714 M: 07502 277 911

E: enquiries@hughtantongardendesign.co.uk

To find out more please visit

HughTantonGardenDesign.co.uk



BARRA PILATES

strength flexibility posture balance

**New classes added Tuesdays
from January 2023**

- 9:15 am mixed ability
- 10:30 am functional health

Busbridge Village Hall

Godalming GU7 1XA

- Small classes
- Easy parking
- Contact me to secure your slot



Private Instruction

Focus on your specific needs and goals through an individual Pilates programme. Or team up with a partner or friend.



07944 076004

barrapilates@gmail.com

www.barrapilates.co.uk



Follow the star

WITH BUSBRIDGE CHURCH

SUN 27 NOV

**ADVENT
EVENSONG**



6pm Hambledon Church, with the choir

Star lights up at Busbridge Church



WED 30 NOV

**ADVENT LAUNCH
WITH BUDDY
& FRIENDS**

AT SCHOOL
PICK-UP



SAT 3 DEC

**NEXUS CHARITY
CHRISTMAS QUIZ**

7pm Busbridge Church
Tickets from
Nexus@bhcgodalming.org

SUN 4 DEC

**9.30AM
MUDDY ADVENT
IN CROWN COURT**

11.15AM
**ADVENT REFLECTION
& TAIZÉ SERVICE**

SUN 11 DEC



4pm Hambledon Church

MON 12 DEC

**AFTERNOON
CAROL SERVICE**

2.30pm Busbridge Church
Mulled wine & mince pies
afterwards



Every year Busbridge & Hambledon Church delivers hampers of goodies to local families in need. Donations of treat/luxury Christmas items welcome. Drop off in church by 4-13 Dec.



TUES 13 DEC

**ABC TODDLERS'
CHRISTMAS PARTY**

9.30-11.15am
Old Rectory

THU 15 DEC

**SHERRY WITH
THE VICAR
& PREPARATION OF
CHRISTINGLE KITS**

2-4pm Busbridge Church

THU 15 DEC

**CAROLS
AT THE PUB**

7pm Merry Harriers

SUNDAY 18 DEC

10AM

**FAMILY CAROL
SERVICE**

Busbridge Church

**ANGEL SCAVENGER
HUNT STARTS!**



7PM

**BUSBRIDGE
CAROL SERVICE**

Busbridge Church



7PM

**HAMBLEDON
CAROLS BY
CANDLELIGHT**

Hambledon Church

PULL OUT PAGE FOR YOUR FRIDGE or PIN BOARD!

For this year's Christmas theme Busbridge Junior School will be helping us to follow the star. visit Busbridge Church from 30 Nov to see the display of their stars

Follow The Star
THE GREAT INVITATION



THE BIG GET TOGETHER ON CHRISTMAS EVE



CANDLELIT CELEBRATION
for ALL the Family...

4PM
at St Peter & St Paul's Church, Godalming

To reserve your places go to bhcgodalming.org/Christmas



Nativity costumes welcome... Christingles to go!...

CHRISTMAS EVE

11PM
MIDNIGHT COMMUNION

Services at Busbridge & Hambledon Churches

CHRISTMAS DAY

10AM 
CHRISTMAS DAY FAMILY CELEBRATION

Services at Busbridge & Hambledon Churches

1 JAN

BENEFACTORY SERVICE 10AM AT HAMBLEDON CHURCH

8 JAN

9.30AM MUDDY CHURCH
11.15AM CLASSIC SERVICE
6PM EVENING SERVICE

EVENTS ARE OPEN TO ALL! HERE'S A KEY TO THE COLOURS:

COMMUNITY EVENT, DIFFERENT LOCATIONS

FUN FOR CHILDREN, YOUTH & FAMILIES

GOOD FOR THE MORE MATURE

BUSBRIDGE CHURCH

HAMBLEDON CHURCH



LIVE & ON DEMAND ON [YOUTUBE/BHCGODALMING.ORG](https://www.youtube.com/channel/UCBhcgodalming)

WED 21 DEC

HOWLING CAROLS

6pm from Busbridge church to Holloway Hill rec. Bar open for a Christmas sing-a-long from 7pm



For more details and events at Hambledon Church see www.bhcgodalming.org, call the church office t.01483 421267 Follow @bhcgodalming

or pick up details in the Yew Tree Café. @yewtreecafebusbridge



Not looking forward to Christmas? Busbridge Church has a team of pastoral assistants trained to listen and support those for whom Christmas is a tougher time. Email: pastoral@bhcgodalming.org



St Hilary's

Preparatory School & Nursery, Godalming

Boys & Girls
Ages 2–11



Independent Prep School of the Year 2020



Applications welcomed for Year 3 Scholarship Day on 28th November

Closing date 21st November

Contact admissions@sthilarysschool.com for more information

www.sthilarysschool.com • Tel: 01483 416551 • Email: secretary@sthilarysschool.com



@StHilarysSchool



@sthilarysschool



St Hilarys School Trust



BEVAN WILSON

Physiotherapy & Sports Injury Clinics

Highly-regarded clinics in Guildford Boxgrove GU1, Godalming and Wonersh, providing professional treatment and specialist advice to help you achieve your goals....

- Physiotherapy & Rehabilitation
- Spinal & Joint Pain, Stiffness
- Pilates & Women's Health
- Post-operative Rehabilitation
- Flexibility, Mobility & Balance
- Children & Adolescents
- Sports Injuries & Massage
- Orthotics & Joint Bracing
- Acupuncture & Electrotherapy
- Working Health & Posture
- Neurological Rehabilitation
- Home & Care Home Visits



"The care, knowledge and experience is exceptional, and they always go above and beyond."

01483 424505

info@bevanwilson.co.uk

www.bevanwilson.co.uk

GETTING YOU BETTER TOGETHER FOR 25 YEARS!

Busbridge Church Services

6*, 20 & 27 NOV, 11 DEC

9.30

CONTEMPORARY

BAND LED WORSHIP + CHILDREN'S GROUPS
REPLACED BY MUDDY CHURCH ALL AGE ON 1ST SUNDAYS
HOLY COMMUNION 3RD SUNDAYS

10.35-11.15 Coffee together

* ON 6TH NOVEMBER THE CONTEMPORARY SERVICE WILL BE HELD AT ST PETER & ST PAUL'S CHURCH, GODALMING. WITH COFFEE AND DONUTS ON ARRIVAL! CHILDREN WILL START IN THE SERVICE AND THEN JOIN THEIR GROUPS.

13 NOV

10.45

REMEMBRANCE SERVICE



6, 20 & 27 NOV, 4 & 11 DEC

11.15

CLASSIC

COMMON WORSHIP WITH HYMNS
HOLY COMMUNION 1ST SUNDAYS

13 & 27 NOV, 11 DEC

18:00

EVENING

EXTENDED TIME FOR WORSHIP & PRAYER
HOLY COMMUNION 4TH SUNDAYS

20 NOV

UKRAINE YOUTH TALK

REPLACES UNPLUGGED YOUTH SERVICE
ALL WELCOME TO SUPPORT



You can watch these services live and on demand on YouTube [QBHCGodalmingonline](https://www.youtube.com/QBHCGodalmingonline).



Meet in Crown Court Godalming

What3Words location: [aside.woven.ideal](https://www.what3words.com/aside.woven.ideal)

MEET AT 9:20 FOR 9:30 START

4 DEC 2022

MUDDY ADVENT

Come to the next Muddy Church, when ALL ages come outdoor to worship together!

FOC parking available in Crown Court car park.

SPECIAL DATES:

6 NOV CONTEMPORARY PILOT AT STP&P GODALMING [NO MUDDY] |
13 NOV REMEMBRANCE SUNDAY | 4 DEC MUDDY ADVENT & CLASSIC ADVENT TAIZÉ

DO KEEP AN EYE ON THE NOTICES WHICH CAN BE FOUND ON THE WEB SITE:

WWW.BHCGODALMING.ORG/NOTICES

OR CONTACT VIC.HICKS@BHCGODALMING.ORG TO SUSCRIBE TO EMAIL.

WE LOOK FORWARD TO SEEING YOU!



[busbridge&hambledonchurch](https://www.bhcgodalming.org) 

   
Follow BHC Godalming

Fully Insured

Fully Qualified

**Corrective
Surgery**

Reducing

Pruning

Thinning



Felling

Dismantling

**Hedge
Trimming**

Stump Grinding

Julian Draper NCH Arb

Tel 01428 681978 Mob 07968 827711

forkingbranches@hotmail.com

Allford
Interiors

BESPOKE
CABINET
MAKERS

For beautiful, bespoke, fitted or freestanding furniture, Allford Interiors designs and hand crafts innovative solutions for all our clients.

We collaborate closely with you from conception to completion. Each commission is personally designed, created and installed from our workshop in Milford.

Previous commissions include kitchens, studies, bedroom and bathroom furniture, bookcases and creative storage solutions.

Using solid timber or high-quality man-made materials, we can create anything from traditional shaker style furniture to unique contemporary pieces.

For a free design consultation, contact Stephen Allford on 07723717897 or for more information see www.allford.co.uk

A J Bennewith & Co
CHARTERED ACCOUNTANTS

**We are an independent practice
that has been offering a personal
service for over 30 years**

**Contact us for all your
accounting needs, tax needs
and a free initial consultation**

**Registered Auditors
Personal Tax Returns
Companies & Charities**

Tel. 01483 539 777
www.bennewith.co.uk





Care in the Heart of your Own Home

If you are looking for extra care and support for a loved one in Surrey then our local carers can help.

Novus Care is regulated by the Care Quality Commission and can provide a qualified, experienced carer to support your loved one in the comfort of their own home from just 30 mins per week to full-time live in care.



For more information or to arrange a free assessment, please contact the Novus Care Team on:

T: 01483 494132 | E: hello@novus-care.com | W: novus-care.com



LOOKING FOR A NEW ROLE?

Nestled within the beautiful & peaceful Surrey countryside, Ladywell Convent is home to the Sisters of Franciscan Missionaries of the Divine Motherhood. A group of Sisters, who have, & continue to dedicate their lives to supporting those in need.

Due to continued growth and the opening of our newly refurbished Franciscan Centre, Ladywell Convent has a number of **job opportunities** available in a range of sectors, including **Care**, **Maintenance**, **Hospitality** & **Administration**.

Ladywell Convent is a vibrant & busy place of work, with around 70 employees. Each of which, support the Sisters, in an environment that offers varied *opportunities and personal growth*.

Get in touch with HR to find out more about our current & upcoming roles, or to submit your CV.



Contact HR
01483 425775 | Recruitment@ladywell.org.uk

Coming up for Prime Time in November and December...



Monday 14th November Tea & Talk: Fire Safety in the Home—

2.30pm Busbridge Church. Did you know that Surrey Fire & Rescue Service has a network of volunteers who can undertake 'Safe & Well' visits to people's homes and assess their need for fire safety equipment, and where need is identified—often fitting it free of charge? Join us to hear local volunteer Peter Hills explain about this service and how you might be able to access it for yourself or on behalf of a family member or friend. After Peter's talk, do stay and chat over tea and cake.

The **Marvellous Movie Matinees** at Busbridge Church return on **Saturday 19th November** and **Saturday 10th December**. Our November offering is last year's remake of a classic 1960s musical depicting the rivalry between the Sharks and the Jets, whilst in December we'll be showing a Christmas classic. Doors open at 2pm for a 2.30 start. Complimentary tea, biscuits and popcorn are available at every screening and we always pause for an interval to allow for refills and chat! Please check the BHC website nearer the time for clues as to the title of the movie being shown or telephone the Church Office so that we can tell you!

Monday 12th December Busbridge Church—2.30pm. Our annual Afternoon Carol Service; a comforting seasonal celebration featuring familiar carols, the Nativity story and some thought-provoking poetry. Special guests are often a feature of this service, so look out for further details nearer the time. The afternoon is rounded off with mulled wine and mince pies and plenty of time to chat and wish your friends the tidings of the season.

And finally for Prime Time in 2022—**Sherry with the Vicar** makes a welcome return at **2pm on Thursday 15th December**. Busbridge Church will once again be filled with the sound of happy chatter and the scent of sherry as we form a production line to create the hundreds of Christingle kits that will be required for all the Christmas Eve services this year. It's much more fun than it sounds and with our Rector, Simon on hand to dispense bonhomie along with the sherry, the job gets done in no time!

Regular **Coffee Drop-In** sessions take place in the **Yew Tree Café** every Monday morning between 10.30 and 11.30am. No need to book ahead for these sessions, just come along and enjoy the chat and good company. A member of the Prime Time Team will always be there to welcome you.

For further details regarding Prime Time or to book onto any Prime Time event, please contact the Prime Time Team via the Church Office on 01483 421267 or email: primetime@bhcgodalming.org



MONTHLY
**Hearing
Aid
Clinics**
are back!

Fridays 2-4pm

11th November, 9th December and 13th January in the Old Rectory, Busbridge Church. Free adjustment, service and replacement batteries. Open to all! Users of NHS-issued hearing aids can now collect replacement batteries from the Yew Tree Café at any time when the café is open. This is an extension of the existing Hearing Aid Clinics run by BHC as part of the Diocesan Hear Here! project.

The new Hearing Aid Clinic at Godalming Library is on the 3rd Monday morning of every month between 10:30 and 12:30.

Cranleigh Tiles & Bathrooms

246 High Street, Cranleigh, GU6 8RL



Whatever the budget, from non-branded basics and essentials to more sophisticated designer products, our family-run bathroom showroom led by Craig Cooper is here to help. We offer free, no obligation estimates and advice on everything bathroom related.

Bathroom Essentials • Showers • Toilets & Washbasins • Baths
Wet Rooms • Lighting • Tiles & Flooring
Design & Installation Available

Open 9.00am to 5.00pm Monday to Friday
Please ring to make an appointment

Saturdays 9.00am to 12.00pm
By appointment only

Telephone 01483 272727 or 07539 145513
craig@cranleighbathroomstudios.co.uk
www.cranleighbathroomstudios.co.uk

Computer Repairs



- ✓ Desktop & Laptop Repairs
- ✓ Wireless & Wired Networking
- ✓ PC Upgrades & Tune Ups
- ✓ Virus & Spyware Removal
- ✓ Data Backup & Recovery
- ✓ Server Support



ONSITE REPAIR OR COLLECTION
 PROFESSIONAL AND RELIABLE SERVICE
 RESIDENTIAL & BUSINESS CUSTOMERS ARE WELCOME



WE ALSO BUY OR REPAIR YOUR

BROKEN IPADS &
 MACBOOK LAPTOPS



REASONABLE PRICES AND FAST TURNAROUND



07809 401721



01483 419468



www.TechGuy.biz



michael@TechGuy.biz

Pilates in Milford

Mondays: 9:30 am and 10:35 am
 Location: BURTON PAVILION



- Pilates to strengthen the core stability muscles
- Improves posture, balance & co-ordination
- Relieves tension and stress
- Tones muscles and prevents injury
- Complements other exercise & relaxes
- Pre- & postnatal conditioning

A great way to get in shape. Easy to learn.

To register call 07767 811074
 Or visit www.westsurreypilates.co.uk

Helen Roberts, Chartered Physiotherapist
 MCSP, DipAPhysSport HPC, APPI

RB Carpentry & Joinery



Cabinetry,
 Carpentry &
 Joinery

Kitchen Fitting
 General Property
 Maintenance

40 years
 experience

References
 available

Busbridge based

Contact :
 Rob Beasley
 0797 7944162

Fed up with Ironing? Let the Ironing Fairy do it for you!



You are not alone!

Ironing is the most dreaded household chore. We regularly heard people wishing for a "ironing fairy" to take it off their hands, which is why we started our business.

Why choose us?

- ✓ Free collection & delivery
- ✓ Turnaround in 48 hours
- ✓ Professional service

We can work around you

Whether you require a regular weekly or 'on demand' ironing service.

01483 428044 07809 401794

www.ironingfairy.net



For our **October** meeting, we were pleased to invite people to join us in the **Yew Tree Café** to hear Jess Ficatier talk on the work of the international charity she works for: '**Habitat for Humanity**'.



Jess gave a really interesting presentation about this company, which aims to fight global poverty and homelessness by providing sustainable homes for communities in 'at risk' locations around the world. It was fascinating to hear about the construction of these houses, using more sustainable resources, such as reinforced bamboo, which withstand adverse weather better than some traditional materials! These resources are often procured in the vicinity around where the houses are being built, involving the skills of local communities. It was heart-warming to see the smiles on the faces of people getting the key to their new home.

The atmosphere in the **Yew Tree Cafe** was very welcoming and everything worked well. So, we have decided to hold our next event there on **Thursday 3rd November at 8.00pm**.

Our own craft expert, **Helen Sturney**, will demonstrate how to create **Festive Papercraft Wreaths**. And she will help us to make our own! The special paper is patterned on both sides with festive and/or attractive colours so the wreaths will look amazing from all angles!! Do come along and have a go – it'll be fun, and we'll be making an early start to our Christmas preparations!

As usual, we'll start the evening with drinks and nibbles and a chance to have a chat with others before handing over to Helen for her demonstration.

All are welcome. We look forward to seeing you!

There will be a £5 visitor fee for non-members.

Happily, this December we'll be putting on a '**live**' **Charity Quiz**, after two years on Zoom!! We're delighted that our regular **Quizmaster team** of **Alan Betts** and **Dudley Hilton** have agreed to do their popular and entertaining double-act again this year.

The Quiz will be held **in Busbridge Church** on **Saturday 3rd December** starting at **7.30pm**. **Please put this date in your diary** and start to think who you might invite to be on your team. Details of how to get your ticket will be available shortly.

***We'll be raising funds for our 2022 charity:
Oakleaf – Making Life Work with Mental Illness***

We're working on our Nexus Programme for 2023 – Please watch this space!

Our annual Membership fee is £18, and there will be a visitor fee of £5.00 for non-members. These fees cover refreshments, gifts or fees for speakers and charity donations. For more information, please contact:

- Janet Harvey at janetmharvey@btinternet.com or
- Kate Kaye at katekaye2@btinternet.com

Nexus – building a network of friendship and support between church and community

Christmas Mincemeat Biscuits

By Sam Gates



This recipe is a great way to use up any mincemeat you have left over after making mince pies.

INGREDIENTS

320g plain flour, plus extra for rolling

200g cold butter cut into cubes

125g caster sugar

1 tsp vanilla essence

1 egg

800g vegetarian mincemeat

Milk for washing

4 tbsp granulated sugar

1. Place the flour and butter into a food processor and pulse until it looks like fine breadcrumbs. Add the sugar, vanilla, egg and mincemeat. Pulse for 2-3 seconds until you have a smooth dough, but the fruit is still visible.

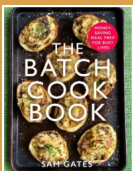
2. Tip the dough out onto a floured surface and roughly shape into a large log. Wrap the log in a sheet of cling film and gently roll until it is smooth, cylindrical and around 25cm long. Chill for 60 minutes. .

3. Preheat the oven to 180/160 fan/gas 4 and line two baking sheets with greaseproof paper.


4. Unwrap the dough, and using a sharp knife, cut the log into 5mm slices. Place the slices on the baking trays.

5. Bake for 20-22 minutes until lightly golden, then remove the trays from the oven. Leave the biscuits for 5 minutes, then transfer to a wire rack to cool.

6. The dough can be wrapped in clingfilm and frozen for up to 2 months before baking. Remove from the freezer and as soon as it is soft enough to slice, cut it into rounds and place on lined baking sheets. Bake for 20-25 minutes until lightly golden and cool as above.



Sam's latest book **The Batch Cookbook** is out now.

 [samgatesfood](https://www.instagram.com/samgatesfood)

 [@samgatesfood](https://twitter.com/samgatesfood)

 www.samgatesfood.co.uk





Repair Café Godalming

Headline News! Godalming now has its own Repair Cafe. Run by Rotarians and Volunteers from the local area, **the cafe opens on the 4th Saturday of each month, 10 am to 12.30 pm, and is located in the Oglethorpe Hall of the Wilfrid Noyce Centre**, conveniently next to Crown Court car park. If you would like to fix a household item that is broken, bring it along. We already have many volunteer repairers and they have offered to help with Clothes; Wood, Metal or Ceramic items; Computer software and IT issues; Bicycles; Small electrical goods; Toys.

Visit our webpage at <https://godalming-tc.gov.uk/repair-cafe-godalming/> to see which skills will be available each month. You can also phone 07771 920302 for details.

All the help, as well as refreshments, is free but we do accept donations.



Tackling your to-do list to make time for you

Find me on social media @mypersonalfixer

My Personal Fixer
Mona - Godalming mum

07985 499 197

info@mypersonalfixer.com

www.mypersonalfixer.com

Covering Godalming and surrounding areas

Home Admin - Booking
Appointments - Personal Shopping -
General Errands - Holiday Prep -
Decluttering - Other Household Help
- Christmas Prep

What can I take off your list?
Call or message to arrange a FOC
consultation

g
GODALMING CHORAL SOCIETY

CHRISTMAS CONCERT

Saturday 3rd December at 7:30pm

St John's Church, Farncombe, GU7 3EJ

Musical Director Sam Hayes

making music

Registered Charity No: 254800

www.samaritans.org

You can call them free on 116 123 or email jo@samaritans.org

Whoever you are and whatever you're facing, they won't judge you or tell you what to do. They're here to listen so you don't have to face it alone.

When life is difficult, Samaritans are here - day or night, 365 days a year

'A Sleigh Ride Around Europe'

Festive music from across Europe, from Spain to Ukraine

Tickets £16 (Free for under 18s)

Record Corner, Pound Lane, Godalming (CASH ONLY),
online at www.godalmingchoral.org.uk,
box office 07941 506172 or at the door



Russell's Hedges & Tree Care

**Tree felling • Reductions • Pruning • Crown Lifting
Thinning • Hedges • Stump Grinding**

Fully Qualified & Insured

Member of Checkatrade

Russell Beddard

Tel: 01483 208161 Mob: 07722 506720

Email: rsgservices@outlook.com



Established 2006

Donline
COMPUTER
CONSULTANCY



*Donline offers professional
computer engineering services to:
Small Business, Home Office, &
Home Users.*

*Donline can assist with all of your
IT requirements: Supply & installation of
hardware and software, upgrades,
networking, system and data recovery,
printing, security, cloud computing,
technical support and training.*

**Call: Don Tocher, on
07870-643486 or 02392-989594**



Microsoft
CERTIFIED
Systems Engineer

Or contact Donline, online:
Web: www.donline.co.uk
Email: don@donline.co.uk

R. & R. Roofing

Guildford

Roofing Contractor & General Builder



- NEW ROOFS & REPAIRS
- CHIMNEY POINTING & REBUILD
- SLATING • TILING
- HIGH PERFORMANCE TORCH-ON FELTS
- FLAT ROOFS • LEAD WORK
- GUTTERING • uPVC FASCIAS & SOFFITS
- EXTERIOR MAINTENANCE

FREE ESTIMATES EMERGENCY SERVICE

01932 344660

07956 554604

7 Rivermead Byfleet KT14 7BZ

Email: russ@rr-roofing.co.uk

Help & Support

Financial Relief

Our church charity CFSF (Church Family Support Fund) has been giving financial gifts to people in need and are always grateful to know of anyone in the wider community needing this support. See www.bhcgodalming.org/c19-givingandsupport or call 01483 421267 to let us know of someone in confidence.

Abuse Support

Call Surrey Against Domestic Abuse 01483 776822 – safety number; if you would prefer to make a call to the church (01483 421267), then we'd be willing to take some discreet information for you and act with you.

If your situation is threatening please call 999.

Life issue events to be held at Godalming Baptist church

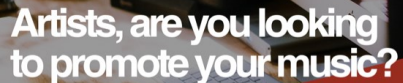
(see also <https://www.godalmingbaptistchurch.org.uk/events>)

'Come and Be colourful': Saturday 12th November from 10.00am-12.00 Noon
A fascinating morning looking at our personality types.

Games afternoon: 2-4pm on 4th November and 2nd Dec. Boardgames with tea and biscuits.

Friendship Lunch/ Community Outing to Haskins Garden Centre/Worthing 10th Nov.

Please contact Sally Pollard-01483-428646 or e-mail pollard3@hotmail.co.uk for more information on any events.



Artists, are you looking to promote your music?

We offer a variety of services, including

- Social Media Marketing
- Video Editing (eg. Lyric Videos)
- Design
- Content Creation

Email info@tonescreative.co.uk
Text +44 7754 932051

tones™



Busbridge Design & Build

www.busbridgedesignbuild.co.uk

07968 022526

Your local firm, specialising in high quality new-builds, extensions, refurbishment and all other aspects of building works

Offering exceptional levels of service & attention to detail at competitive prices

Excellent local references and referrals

Contact us today for a quotation or to discuss your requirements

BUSBRIDGE EVENING WI

Our monthly meetings are held on the 2nd Tuesday of each month in Busbridge Village Hall.
Meetings will start at 8pm.
New members welcome.
Contact: Ann Heward 01483 420360

Tuesday 8th November talk by David Rose "Vintage Postcard"
Views of Surrey Villages, Then and Now

Tuesday 13th December
A Christmas Celebration

SMALL ADS

GARDENER TRAINED WITH THE RHS, HARD WORKING AND RELIABLE.

Will undertake weeding, pruning, mulching and bed work plus more from £25 per hour and medium hedge cutting service priced per job. Contact Matthew on **01483 421547**

MASSAGE THERAPY IN YOUR HOME with ex-paramedic, compassionate inquirer, Ruth. Do you struggle to take 'me time'? Have aches and pains? Are you stressed or worn out? First 2-hour experience half price @ £75. Take Action Text 'Yes' to **07766 720796** www.ruthveda.com

SWIM COACH Swim England Qualified, Level 2 Coach & Teacher, Level 2 Open water, Channel Swim coach, Masters 18+ Club. All ages and levels welcome. RLSS Lifeguard. Based at St Catherine's School, Bramley
info@surreyopenswim.co.uk **07592689059**



H.D Brooks & Sons Painters & Decorators

- Trusted, Rated and Reliable
- All aspects of interior and exterior painting and decorating undertaken
 - High end spray finishing
 - UPVC Spraying
 - Dustless Sanding

Proud members of

Checkatrade.com
Where reputation matters
Rated 9.96 as of 2022

Contact us for a free quote or advice
07557 342518

info@hdbrooksandsons.co.uk
www.hdbrooks.co.uk

Farncombe Morning Townswomen's Guild

We meet in St John's church room, St John's Church, Farncombe GU7 3EH on the second Wednesday morning of each month. Meetings start at **10.00**.

Nov 9th: The Experiences of a Film Extra

Dec 12th: Christmas party Botswana.

Phone Shirley on 01483 418102 for more information. We are a friendly group and would welcome new members. You can attend as a visitor to give us a try; we will be very pleased to see you.

PC Doctor Godalming

Fixing computers of all shapes and sizes

If your computer is run down, unreliable and generally out of sorts then why not call for professional help and advice in your own home. All types of computer or network problems dealt with on a "No Fix No Fee" basis.



79 Pullman Lane, Godalming, GU7 1YB
Tel: 01483 424378 | 07876476990
email to: mike.lagan@pcdocgo.co.uk



DAVE MOSELEY PAINTER AND DECORATOR

Interior and Exterior decorating
Qualified with over 30 years' experience

Mobile : 07774 132003
Telephone:- 01483 300891
Email: dmosley59@hotmail.co.uk

*Professional, confidential &
sympathetic counselling*

Gill Brennan

MBACP (Accred), FdA (Hons), BA (Hons)
07947 424 538

gillhbrennan@gmail.com

www.godalmingcounsellor.com





Godalming MUSEUM

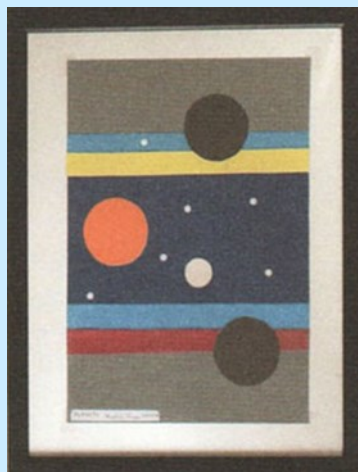
Milford Artists' Autumn Exhibition continues until **6th November**.

From **12th to 27th November** **Martin Jones** presents **Glimpses, Facts and Faces**. He invites

visitors to be drawn, mystified, puzzled and compelled by the vibrant colours of his artworks.

The Museum will be closed for essential repair work on 10th and 11th November.

Local stained glass artist, **Rachel Mulligan** has repurposed unwanted fragments of stained glass from the 1870's chapel at Charterhouse into works of art that meld old and new glass. An exhibition, **Charterhouse Stained Glass Reimagined** from **1st**

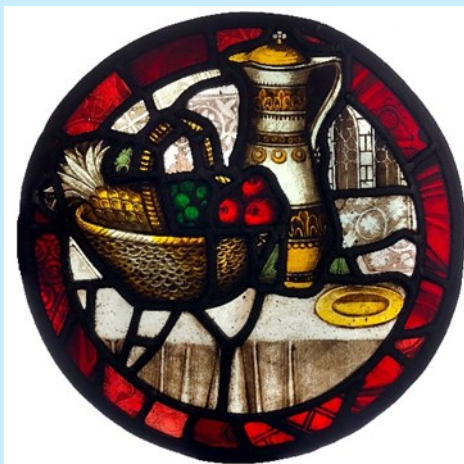


to 18th December is part of the 150th anniversary of the school's move from London to Godalming.

Also during the town Christmas Festival on 26th November Santa will be in the Museum garden!

LECTURES AT THE OCTAGON, GODALMING PARISH CHURCH 7.30 FOR 8PM:

Wednesday 9th November: Winkworth Arboretum; the Legacy of a Remarkable Man by Peter Herring.



Tickets for lectures are £5 available from Godalming Museum or on the door on the night.

Godalming Museum is open for 4 days a week, Thursdays, to Sundays, from 11am to 3pm, at 109a High Street opposite the Pepperpot. Please check the website www.godalmingmuseum.org.uk or ring 01483 426510 in opening hours for further details.

We ask you to please make sure that those people who are the focus in photos have given their consent to be included in our publication and on our website; in the case of minors we ask that this is parental consent. "The Bridge" would like to thank advertisers for their support, but to make clear to readers that it does not offer any endorsement of the goods or services advertised. Views expressed in the articles are not necessarily those of the Editor or Busbridge Church. The Editorial Team reserve the right to edit any articles submitted for consideration for publication.

EDITORIAL TEAM

David Brockman (Editor)
Jacky Beale (Small Ads) 423768
Christine Payne 417320
Lorna Sherwin

Contact the Editor:
editor.atthebridge@gmail.com
Contact the Treasurer:
bridgetreasurer@bhcgodalming.org

**Copy Date for next edition:
Wed 14th December**

Write to us:
c/o Church Office, The Old Rectory, Old
Rectory Gardens, Godalming GU7 1XB.

Rector: Rev Simon Taylor 421267

Advertising

DISPLAY ADVERTISING is for businesses who wish to advertise in full, half, quarter or eighth page format.
Contact: editor.atthebridge@gmail.com

SMALL ADS are designed to advertise local services. £5 per insert, 40 words maximum. For Sale items £2, 20 words maximum. Please contact Jacky at: jackybeale@hotmail.com

We deliver free of charge to over 1900 local homes. For more information, please contact:
editor.atthebridge@gmail.com



MEMBER OF
THE SMAI INSTITUTE



Karen Regan
Foot Health Professional

KAREN REGAN DIPFHP MCFHP MAFHP
MOBILE FOOT HEALTH PROFESSIONAL
WWW.HEARTANDSOLE.SITE
07776309567



Vanessa Edwards Hypnotherapy
Cognitive Hypnotherapist
DipCHyp HPD NLPprac

www.vanessaedwardshypnotherapy.co.uk
info@vanessaedwardshypnotherapy.co.uk
07523101952

I specialise in helping women with anxiety, stress, confidence issues and weight loss. I also work with phobias, OCD, bad habits, smoking, depression and insomnia.
if your issue is not listed here please contact me.



**Looking to maintain your independence?
Your local home care agency is here to help**



carers at home
maintaining your independence

Rated 'outstanding' for care by the Care Quality Commission

**Call us today on
01483 899350**

Registered office

Maple Suite
Guardian House
Borough Road
Godalming
GU7 2AE

Carers at Home Limited.
Registered in England & Wales no. 05938034

 [@carersathomeuk](#)

 [@atcarers](#)

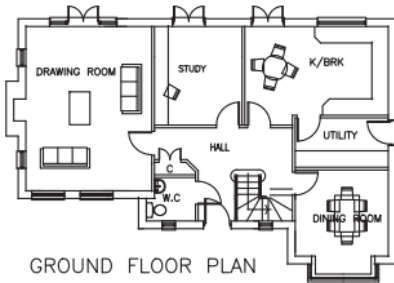
 [@carersathomeuk](#)

carersathome.com
info@carersathome.com

Carers at Home is registered with the Care Quality Commission - CQC Provider ID 1-101644741



FRONT ELEVATION



GROUND FLOOR PLAN

PLANNING & DESIGN SERVICE LLP

Architectural drawings for
Extensions, Alterations &
New Build

Free No Obligation Quotations

Tel: 01483 417555
Mob: 07818 014357

www.architecturesurrey.co.uk
simonplanning.design@btinternet.com



Free valuations Monday-Friday:
9:30am-5pm

Ewbank's



Surrey's Premier Antique and Specialist Auctioneers

Vintage Posters: 4 November
Antique & Collectors': 9 November
Toys & Models: 10 November
Entertainment & Memorabilia Timed Sale: 10 November
Entertainment & Memorabilia Live Sale: 11 November
Retro Video Games & Consoles: 18 November

Vintage Posters: 1 December
TLC Deck of Cards, Charity Art Auction: 2 December
Cars, Motorbikes & Automobilia: 6 December
Jewellery, Watches & Coins: 7 December
Silver & Fine Art: 8 December
Antiques, Asian Art, Books, Clocks & Furniture: 9 December
Fine Wines & Spirits: 15 December

Accepting consignments now

Burnt Common Auction Rooms, London Road, Send, GU23 7LN

info@ewbanks.co.uk

01483 223101

www.ewbanks.co.uk