

# *The* Bridge

JULY & AUGUST 2021



Spanning the LOCAL COMMUNITY

[www.bhcgodalming.org/thebridge](http://www.bhcgodalming.org/thebridge)

# PRIOR'S FIELD

GODALMING SURREY



GSA Girls' Boarding and Day School 11-18

*Achievement in all its forms  
is alive and kicking in every  
part of their school day.*

- Tatler Schools Guide 2021



**PRIOR'S FIELD - THE PLACE TO ACHIEVE!**

Visit our website to book your place at one of our Autumn Open Days  
Saturday 11 and 25 September or Saturday 9 October  
01483 810551 [www.priorsfieldschool.com](http://www.priorsfieldschool.com)

#believe #achieve #succeed

Registered Charity No. 312038



# CONTENTS

PAGE 9 *A Fond Farewell*

As she prepares to move on, head of Busbridge Infant School, Katherine Smith, shares her memories of her time there.

PAGES 10 & 11 *Anyone for Bowls?*

An introduction to what's on offer at the local Holloway Hill Bowling Club.

PAGES 12 TO 14 *Busbridgewatch*

Photographs from the last year, capturing the range and beauty of our local wildlife.

PAGES 24 & 25

*Lockdown Reflections*

From the local Prime Timers.

PAGE 29 *Friends International*

Local resident, Shelagh Godwin, tells us about her involvement with this group.

---

FRONT COVER : Local Tamworth pig by kind courtesy of Chris Payne

## Appliance Service and Sales

- Repair of most main makes
- Built-in and Freestanding
- New appliances with installation
- \* Built in and American F/F

**Checkatrade.com**  
Where reputation matters

**Cooker/Oven  
Dishwasher  
Washing Machine  
Tumble Dryer  
Fridge/Freezer \***

Elstead (01252) 705198

[www.applianceexpert.co.uk](http://www.applianceexpert.co.uk)



# Busbridge Junior School NEWS

# LOCAL NEWS

It has been all systems go at BJS this summer term: not even a global pandemic can stop us doing what we do.

We have feasted on Sports Days, inter-school cricket competitions, school productions, a whole school Beach Day, Pet Day, Y4 & Y6 residential visits, Cycling Proficiency training, Science Week : along with the myriad of other 'normal' learning activities that happen at school.



In June our Holloway House Captains and Vice Captains organised a whole school fun run to raise funds for the local charity Mane Chance. Mia, Hattie, Harry and Callum (L to R in the photo above, with Mrs Barrett in the middle) did a great job organising the event, leading an assembly to tell the children about Mane Chance and then running with EVERY year group to encourage them! The final total raised was over £200. Mrs Barrett was the inspiration for the run as in May she ran 90 miles over 4 days in aid of Mane Chance. Truly incredible. Thank you to all of the children and staff who took part in the run, and thank you to our neighbours, the Harvie family, for letting us run on their land.



Also in June, our Y6 children spent an afternoon touring the sights of Godalming. Mr Evans, one of our Y6 teachers can be seen in the photo addressing some children whilst standing in a mystery location: do you know where in Godalming they were? The children found out so many interesting facts about Godalming. Here are some for starters:

Fred the ghost hangs out in the Thyme For Tea basement

There is second river in Godalming called the River Ock

The bedroom of one of our Y6 children featured on the tour, as back in the 1700s it used to have a large mechanical weaving machine inside it (as opposed to Star Wars Lego ...)

'Wey' is the Celtic word for river, so when we refer to it as 'the River Wey' we are actually saying 'the River River': so best just call it 'the Wey'

Who needs travel to foreign parts when there is so much to find out on our very own doorstep?!

*Richard Catchpole, head teacher*

# End of an ERA

*It was the end of an era when the iconic Debenhams department store in Guildford closed its doors for the final time on May 12th.*

A sad day for many and we particularly think of all those employees affected by its closure and pray that new job opportunities will arise for them soon. The site itself going forward will be referred to as St Mary's Wharf (reflecting its former industrial heritage) and is currently undergoing public consultation and redevelopment proposals.



*Local residents, Brian and Pat Oxborough, share their memories of the store:*

In the early 1960's Guildford's lower High Street changed dramatically. John Moon's timber yard was sold and the Horsham Road was built through to the lower end of the High Street, rather than coming in through Quarry Street. A fine new store was built on this new road, called Plummer Roddis, and we all waited excitedly for it to open. There were 3 floors & a basement, joined by escalators, with a café and lovely riverside terrace—it was always a delight to spend a while watching the river traffic and wildlife. An underpass led from the High Street and musicians often played to accompany a shopping trip! The integral underground car park was a very useful addition to an increasingly busy Guildford.

Disaster struck however in September 1968 when the River Wey overflowed its banks and flooded the entire basement, and indeed all of the lower High Street, taking many months to dry out.



Plummer Roddis became just Plummers and then later again, Debenhams. Always an interesting department store, it sold items ranging from garden furniture and equipment, through clothing for me, women and children; cosmetics, perfumery and jewellery; with household goods, linens and lighting and many others.

It will certainly be greatly missed.

# Escape to the COUNTRY.....

*AKA, Home Farm Road!*



'If you go down to the woods today, you're sure of a big surprise!' Not teddy bears, but spring brought a delightful host of new born animals briefly gracing our local fields and woods just off Home Farm Road. Plenty of 'Oohs' and Aahs' as local walkers were treated to a taste of country living. I'm sure local children were thrilled to see them, and being a 52 year old one, I know I was!

Busbridge  
Parish  
Register



FUNERALS

28th April  
Doris Borthwick

4th May  
Nora Kennea

BURIAL OF ASHES

26th May  
Sheelagh Brown

BURIAL OF ASHES AT NIGHTINGALE  
CEMETERY

11th June  
Florence Joan Gulyvasz  
Joyce Lyons

*Thank you*  
**CHRIS**

Huge thanks and appreciation go to long standing member of The Bridge team, Chris Sollars, who is stepping down from his role after this edition. Chris has generously and faithfully volunteered to serve the local community for many years. He and his valuable contribution will be greatly missed.



Emery &  
Orchard  
ESTATE AGENTS

*Passionate about property*

SINCE 1993



EMERY & ORCHARD

## Godalming's Local Independent Agent Established for over 25 years.

### Property to sell in Godalming or the Villages?

Then contact Tony Emery  
or Jeremy Orchard on  
**01483 419 300**  
to arrange a  
Free Market  
Valuation.

20 High Street  
Godalming  
GU7 1EB

[www.emery-orchard.co.uk](http://www.emery-orchard.co.uk)







## Sunrise: A Great Place to Call Home

Living in a residential care community like Sunrise, it's literally home-from-home. Every resident is encouraged to bring in their own furniture, and their pets. High quality care and support is provided in an environment where residents can make new friends and enjoy a variety of events.

Our programme of activities each day offers a full social life, from musical entertainment to a pub quiz, tea dance to art and crafts, games to flower arranging.

Join in as much or as little as you like - our desire is that residents live a happy life that suits them.

---

Call us on  
**01483 604099**  
to book a tour.

---

**Sunrise of Guildford**  
Astolat Way, Peasmarsh,  
Guildford, Surrey GU3 1NE

**SunriseGuildford.co.uk**



**GUILDFORD**



# Busbridge Infant School NEWS



We send our very best wishes to head teacher, Katherine Smith, as she moves on from Busbridge at the end of the summer term. She will be very much missed.

## A FOND FAREWELL - *Thank you for the Memories*

Looking back on the 10 years since my appointment as head teacher at Busbridge Infant School, I cannot believe just how many changes there have been! If I could just list a few of the highlights. Changes to the building:

- new offices direct with sightlines onto the playground and an accessible ramp
- a purpose built library fashioned out of 3 separate store cupboards
- a new intervention room made by inserting a partition wall to 'borrow' space from the corridor
- and last but not least, our wonderful Nest to be installed on 12th July! Think large garden office repurposed as a curriculum kitchen and group room. Invaluable!

Changes outside:

- secure fencing and gates at both site entrances, including entry phone system
- extended playground and outdoor classroom space through installation of additional all weather surfacing
- raised vegetable beds and potting shed to support weekly gardening and healthy lifestyle message
- wonderful Woodland School area, complete with canopied fire pit and lovely pond

Underpinning these developments is the amazing Busbridge community. Without their tremendous support (financial yes, but also commitment and support with hours of time given up so generously) we would not be in the position we are now, where we have continued to grow and evolve whilst still providing the very best opportunities and experiences to the children in our care.

I leave Busbridge with the most wonderful, lasting memories. Knowing every family, every child, and following their individual journeys through the school (and often beyond) has been such a privilege. To be able to share and celebrate their achievements is truly special and something that I never tire of. As I start my new adventure in September, I will be thinking of all the children, families and staff beginning theirs with the start of the new school year and all the changes that brings. Thank you Busbridge – you've been amazing!

*Katherine Smith, head teacher*



# BOWLS is Fun



In a recent edition of *The Bridge* the early years of Holloway Hill Bowls Club was described and there were some wonderful photographs. But what is playing bowls like today? I am delighted to respond to a request to write about this from the Editorial team at the *Bridge Magazine* because I see it as my duty to encourage absolutely everyone to try the game.

I sometimes dream that there is a sandy beach on the way to Hascombe but no one told me it was there: it's a bit the same with bowls: I wish I'd been invited to "try out" in my thirties and

not my fifties to discover a form of exercise that I enjoy. In addition I have made many friends and I love all that goes with being a member of a bowling club. Once I discovered the joy of bowls I made up for the lost years by playing outdoors in Busbridge throughout the summer for eleven years and two winter seasons indoors at Horsham Bowls Club.

Bowls, everyone knows, is a very sociable game and the social aspect and care for members goes way beyond being friendly during an afternoon roll up. Members who give up playing, for example because they no longer have the strength to reach a long jack, remain social members and are a valued part of the community which is the club. Jenny Bywater, our secretary, organises annual bowling holidays to countries such as Spain or Menorca and for many years Sheila Mackelworth has organised one to the Isle of Wight. In the winter there are usually meals and quizzes in the club house and short mat bowls indoors. Maintenance is voluntarily and cheerfully done by a group of dedicated members. The annual dinner and trophy presentation ceremony is a special occasion where certain members show that they can still do the jive in style.

However competitive one may be, the “etiquette” that surrounds bowls is an essential part. However poor the last bowl bowled by your team member, a good “skip” gives positive feedback. For example, regarding a bowl that went in the ditch and is out of play, “Lovely line Mary but take a bit of weight off next time”. We all say “Have a good game” to the opposition after trial ends are over and the match commences. Having a “good game” doesn’t mean winning but it does mean enjoying it and how we chat to our opposite number is a key part of that. Being polite, kind & gracious make the game enjoyable.



Holloway Hill Bowls Club,  
Recreation Ground,  
Grosvenor Road, GU7 1PA

Contact: Jenny Bywater  
Tel: 01483 416054

Friendly matches (3 players each end on each “rink”) take us all over Surrey and into Hampshire at weekends, playing in the Three Counties and other Leagues as well. New players are encouraged to play in friendly matches at home and away and usually surprise themselves how quickly they settle in.

In a normal season we take it in turns to clean the club (annual duty), make the teas (cakes, scones and sandwiches) and run the bar. Teas usually include the Captains telling funny stories or reading poems, usually about bowls, and a £1 raffle. A typical afternoon friendly match of 18 ends takes about three hours with tea in the middle and afterwards drinks from the bar. In the lovely settings of different villages and towns I see a bowls afternoon as a mini holiday.

You know what is coming next, the big advert!

*Please do come and visit Holloway Hill Bowls Club and have a go even if you think it is not your “sort of thing”.*

*Clare Haddad*

*Roll ups are at 2pm on Mondays and Fridays.*

*Please contact the club secretary, Jenny Bywater,  
on 01483 416054 or  
email [jennybywater@gmail.com](mailto:jennybywater@gmail.com)  
if you plan to come for the first time so we can  
provide some assistance.*



# BUSBRIDGEWATCH 2021

CELEBRATING LOCAL WILDLIFE



Below top : Three little baby field mice huddle together for protection and warmth in Minster Road.

Below bottom : A local bumblebee enjoying all the delights that this rhododendron has to offer. There are 24 different species of bumblebee in the UK. They can be distinguished by the colour of their tail plus the number and colour of their stripes. We think this one is a white tailed bumblebee.



Above : Rowe's Flashe Lake at Winkworth Arboretum on 25th January.



'Someone's knocking at your door...!'

Parkfield, last October



Above : A slowworm, spotted just before dusk in Heath Lane, April 2021. Whilst they may resemble snakes, they are in fact legless lizards and quite harmless. We suspect this is a male; indicated by its slightly paler colour and blue markings along its body.

Amazingly, they can live for up to 50 years!

Slowworms are protected under the Wildlife and Countryside Act of 1981.



Field below Ashstead Lane April 2021

Below : Grey wagtail pictured alongside the stream at the bottom of Tuesley Lane. The grey wagtail has the longest tail of all the wagtails, which it bobs constantly (hence its name), while improving its agility and ability to catch insects.



Below : Get set, ready, fly!  
Caught in action, off Chestnut Way



Busbridgewatch continues overleaf...





A baby pigeon enjoying a rest

Blewfield



Above : May 2021. A family of Canada Geese on Broadwater Lake proudly rearing their 8 goslings.



Tightly huddled together is this brood of baby robins, probably just days old, nesting in a log store in May.

Tuesley Corner

Bottom left : A rather cheeky heron drops by on a local shed in Minster Road. If I mentioned that the garden in question also had a pond, it may explain why the heron had a particular interest in this spot!



Bottom right : A more unusual visitor to local environs is this common tern. A pair were spotted on the log over Wood Lake at the bottom of Tuesley Lane.





# Cranleigh Tiles & Bathrooms

246 High Street, Cranleigh, GU6 8RL



Whatever the budget, from non-branded basics and essentials to more sophisticated designer products, our family-run bathroom showroom led by Craig Cooper is here to help.

We offer free, no obligation estimates and advice on everything bathroom related.

Bathroom Essentials • Showers • Toilets & Washbasins • Baths  
Wet Rooms • Lighting • Tiles & Flooring  
Design & Installation Available

Open Monday to Friday  
10am to 4pm for appointments

*All enquiries warmly welcomed but in order to promote safe shopping please can we ask you to book an appointment prior to your visit.*

Telephone 01483 272727 or 07539 145513  
craig@cranleighbathroomstudios.co.uk  
www.cranleighbathroomstudios.co.uk

## OPEN EVENTS 2021

Tuesday 28<sup>th</sup> September

Thursday 21<sup>st</sup> October

Tuesday 23<sup>rd</sup> November

[admissions@stcatherines.info](mailto:admissions@stcatherines.info)



## St Catherine's, Bramley

GSA Day & Boarding School since 1885 | 4 - 18 years

Guildford GU5 0DF | [www.stcatherines.info](http://www.stcatherines.info)

[admissions@stcatherines.info](mailto:admissions@stcatherines.info)

**Fully Insured**

**Fully Qualified**

**Corrective  
Surgery**

**Reducing**

**Pruning**

**Thinning**



**Felling**

**Dismantling**

**Hedge  
Trimming**

**Stump Grinding**

**Julian Draper NCH Arb**

**Tel 01428 681978 Mob 07968 827711**

**[forkingbranches@hotmail.com](mailto:forkingbranches@hotmail.com)**

# Gardener's CORNER



Spring was a rather cold and unpredictable affair this year but nothing prepared us for the giant hailstones, up to 1cm across, that fell in the late afternoon on Wednesday 5th May. The

exceptionally cold spring had left gardeners struggling to bring on tender tomato and bedding plants; it was noticeable that many garden plants chose to flower later than they ordinarily might.



2021 was however, a fantastic year for bulbs, especially tulips, which enjoyed an exceptionally long flowering period.



On the downside, magnolias suffered heavy frost damage and wisteria's normally showy blooms were much reduced. Blueberries failed to flower, and in the vegetable garden, peas reluctantly podded!



## Surplus VEG?

Nonetheless, we gardeners are a hardy and resilient bunch, used to the vagaries of the weather and challenges it brings. So with this in mind, we're already dreaming of our bumper harvests this summer & autumn! If you find that you are well rewarded for your efforts, with surplus to spare, why not consider donating to others in need at the Godalming Community Store?

**Fruit/veg/herb donations are welcomed & can be dropped off along with any other donations between 9:30am and 12:30pm Monday - Friday at the Community Store at the Wilfrid Noyce Centre, Crown Court, High Street, Godalming**



# ~~Old memories~~ New memories

Ready for the best years  
of your life?



**Only you  
know when  
you're ready.**

When it feels like  
the right time to  
embrace the best  
years of your life...

**...our retirement  
village will be  
ready when  
you are.**

**BRAMSHOTT  
— PLACE —**

*Inspired* in Hampshire

Visit safely today!  
Call 01428 788 250 or  
visit [bramshottplace.co.uk](http://bramshottplace.co.uk)

Ready for your *best* years?

# SUNDAYS AT BUSBRIDGE CHURCH



## 10.30AM Children's Worship

**SERVICES UPDATE!** Services at both Busbridge and Hambledon churches continue to be broadcast live on YouTube. Those attending services are requested to sign up in advance and wear a face covering. Full coronavirus health and safety measures are in place.



For Sundays 4 to 18 July:

### 9AM Classic Service

with communion on 1st Sundays of the month

### 10.30AM Contemporary Service

#### "Conversations from the Couch"

Informal, topical, interview style. Conversations offers contemporary worship with band led music in a TV studio atmosphere

### **NEW! 10.30AM Children's Worship—Old Rectory Gardens**

Until restrictions are fully lifted, families with 0-11s are enjoying fun worship activities together in the Old Rectory Gardens. Children must be accompanied by an adult. Running until the end of term.

### **Sundays in the Summer Holidays: 25 July to 29 August**

10.30AM Morning Worship (Combined) at Busbridge Church  
8 August—10.30AM Churches Together service at the Bandstand

For all info and to sign up: [www.bhcgodalming.org](http://www.bhcgodalming.org), or watch online:



BHC Godalming

[www.youtube.com/bhcgodalmingonline](http://www.youtube.com/bhcgodalmingonline)



SCAN ME



# St Hilary's

Preparatory School & Nursery, Godalming

Boys & Girls  
Ages 2–11



Independent Prep School of the Year 2020



Bursaries & Scholarships available for Year 3 Entry

Virtual Open Mornings Taking place every Friday at 11am

[www.sthilarysschool.com](http://www.sthilarysschool.com) • Tel: 01483 416551 • Email: [registrar@sthilarysschool.com](mailto:registrar@sthilarysschool.com)



@St-HilarysSchool



@sthilarysschool



St Hilarys School Trust



## Russell's Hedges & Tree Care

Tree felling • Reductions • Pruning • Crown Lifting  
Thinning • Hedges • Stump Grinding

Fully Qualified & Insured

Russell Beddard

Tel: 01483 208161 Mob: 07722 506720

Email: [rsgservices@outlook.com](mailto:rsgservices@outlook.com)



# The DENNINGBERG CENTRE *needs your help!*



The Centre, situated next door to the Borough Hall and opposite Waitrose car park in Godalming, was set up in 1974 by Danny Denningberg and his wife, Peg, both well known local councillors and Mayors of Godalming. It is a café, open to older people, and serving light refreshments, including delicious homemade cakes, and light lunches. Bacon baps and fish finger sandwiches have been added to the menu and are proving

very popular! The Centre also offers a popular and affordable chiropody service, and can be hired for small parties and meetings. There are plans to re-start the ever-popular bingo sessions and other afternoon activities as soon as possible.

The Centre has been through difficult times in recent years but in late 2019 new trustees and a new and enthusiastic part-time manager were appointed. The Centre was generously decorated by members of the local Rotary Club and new lighting was fitted by a retired electrician, who also did numerous small jobs to upgrade and modernise the premises.



Unfortunately this new enthusiasm coincided with the start of the Coronavirus pandemic and the Centre was forced to close for most of the last eighteen months. It re-opened in May, initially from 10-2 on Mondays to Fridays. The staff and volunteers are all committed to breathing new life into the Denningberg, making it once again a vibrant and welcoming place for older people. We hope to update its image and enhance its profile in the community through, among other things, the use of social media. There

are plans to replace the old tables (some dating from the 70s) and to make other improvements to ensure that Danny's legacy to the town lives on.

In order to ensure that the Denningberg Centre fulfils its potential we need some help. We need more people to use the Centre and to spread the word about it. And we need more volunteers- mainly for the café, but also for fundraising and to help with other activities. If you have a couple of hours to spare, either on a regular or an occasional basis, please get in touch. Liz, our manager, will be delighted to invite you in and to tell you more about the Centre and the opportunities available, over a cup of tea or coffee.

*We look forward to hearing from you!*

Please phone 01483 422027 or email [thedenningbergcentre@btconnect.com](mailto:thedenningbergcentre@btconnect.com)

## Open Mornings

Tuesday 21<sup>st</sup> September 2021

Wednesday 13<sup>th</sup> October 2021

## Reception Entry Taster Afternoon

Friday 1<sup>st</sup> October 2021

## Reception Entry Play Assessments

Saturday 16<sup>th</sup> October 2021

prepadmissions@stcatherines.info



## St Catherine's Prep, Bramley

GSA Day & Boarding School since 1885 | 4 - 18 years

Guildford GU5 0DF | [www.stcatherines.info](http://www.stcatherines.info)

## Computer Repairs



- ✓ Desktop & Laptop Repairs
- ✓ Wireless & Wired Networking
- ✓ PC Upgrades & Tune Ups
- ✓ Virus & Spyware Removal
- ✓ Data Backup & Recovery
- ✓ Server Support



ONSITE REPAIR OR COLLECTION  
PROFESSIONAL AND RELIABLE SERVICE  
RESIDENTIAL & BUSINESS CUSTOMERS ARE WELCOME



WE ALSO BUY OR REPAIR YOUR

BROKEN IPADS &  
MACBOOK LAPTOPS



REASONABLE PRICES AND FAST TURNAROUND

07809 401721 01483 419468

[www.TechGuy.biz](http://www.TechGuy.biz) [michael@TechGuy.biz](mailto:michael@TechGuy.biz)

## A J Bennewith & Co

CHARTERED ACCOUNTANTS

We are an independent practice  
that has been offering a personal  
service for over 30 years

Contact us for all your  
accounting needs, tax needs  
and a free initial consultation

Registered Auditors  
Personal Tax Returns  
Companies & Charities

Tel: 01483 539 777  
[www.bennewith.co.uk](http://www.bennewith.co.uk)





# PASSION FRUIT *Drizzle Loaf*

This is a lovely light and summery loaf cake, perfect for tea in the garden.

**1** Preheat the oven to 180°C/160°C fan/gas 4 and line a large loaf tin, with greaseproof paper. Make sure you leave a little extra paper hanging over both ends, to help ease the cake out of the tin.

**2** Remove the pulp from the passion fruit and separate the juice and seeds.

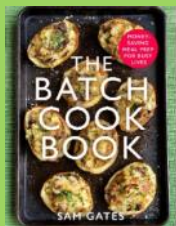
**3** Beat the butter and caster sugar together until pale, light and fluffy. Gradually stir in the eggs, flour and baking powder and mix well. Add the milk and one tablespoon of passion fruit juice and stir until completely combined. Pour the cake batter into the prepared tin and smooth the top. Bake for 45-50 minutes until firm and a tester comes out clean.

**4** While the loaf is baking make the drizzle by mixing the granulated sugar, remaining passion fruit juice and orange juice.

**5** Place the cake in its tin on a cooling rack, and while it is still hot pierce all over with a cake tester, making lots of little holes. Pour the drizzle over the top. Scatter with passion fruit seeds if you like, then leave for 15 minutes. Remove from the tin and allow to cool before slicing.

## INGREDIENTS

4 passion fruit  
170g butter  
170g golden caster sugar  
3 eggs, beaten  
275g self-raising flour  
1 tsp. baking powder  
3 tbsp. milk  
100g granulated sugar  
2 tbsp. orange juice



Sam's latest book *The Batch Cookbook* is out now.

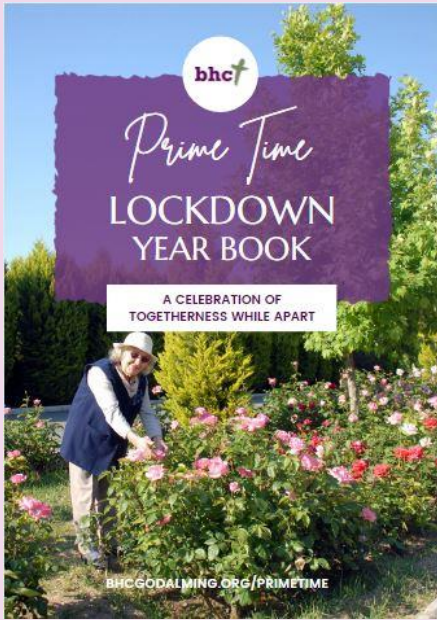
 [samgatesfood](https://www.instagram.com/samgatesfood)

 [@samgatesfood](https://twitter.com/samgatesfood)

 [www.samgatesfood.co.uk](http://www.samgatesfood.co.uk)







## Lockdown REFLECTIONS

Prime Time members have been reflecting on their experiences of lockdown with the aim that all these collective memories will be recorded in a keepsake book. A copy of this book will be stored in the archives at Busbridge Church and a copy will be given to each Prime Time member for them to share with their families. It is hoped that this book will be passed onto future generations as a record of how the older members of the Busbridge & Hambledon communities not only spent the months they found themselves in lockdown due to Covid-19, but also how they felt about this time in our history and what the generation hope will be the learning from it.

Penny Naylor, Seniors' Ministry Lead at Busbridge & Hambledon Church, reports that 'the aim of this project is to create a permanent record locally of these strangest of times as well as being a reminder to us all that although life as we knew it stopped for a year, Prime Time and most importantly the Prime Timers most definitely did not; we just adapted'.

Among the items featured in the book are examples of new skills learnt or existing ones honed during the period when we were required to stay at home. There are paintings and illustrations and photographs aplenty of projects that have been achieved during lockdown.

*From re-purposing old curtains and turning them into new ones,*



*and the couple who decided to use the time to brew their own cider...*

*...to the Prime Time member who knitted over 200 baby bonnets during lockdown to donate to the Special Care Baby Unit at the Royal Surrey County Hospital.*



How Prime Timers filled their locked-down days was certainly varied. Prime Timers have read a veritable library of books over the lockdown period and members top recommendations for 'You must read this...' makes for interesting reading in itself.

And when they weren't reading, cooking or trying out a new hobby or skill, Prime Timers (like the rest of the nation) turned on their TVs. 'The Repair Shop' appears to have been 'Must See TV' for Prime Time members during lockdown, with many reporting that this programme had helped get them through it. Others though preferred to revisit classics such as 'The Fall and Rise of Reginald Perrin' and 'Yes Minister'.



Some passed the time by trying out new recipes; a selection of the more successful ones feature in the book – from main meals to fruit cake, all tastes are catered for amongst the pages!

When it comes to the Prime Timers' personal reflections on our year spent in lockdown, recurring themes emerge. Acknowledging the immediate benefits to the planet and our natural environment that stopping our frantic lifestyles brought, such as cleaner air and seas; there is a desire amongst the Prime Time generation to see us taking greater care of our

world. Others have expressed a hope that this year may have taught us all what are the more important things in life; things that we must hold onto when busy life resumes and from one member a recognition that 'Things I thought important are no longer so'. Another ended her reflection with the question 'Have we learnt to care for each other with a little more awareness and kindness?' to which she gave the answer; 'Only time will tell...' With a combined collective wisdom gained through approximately 8000 years of life experience, the Prime Timers' reflections make for a fascinating read.



Prime Time is open to anyone (over 50s, retired and/or semi retired) and **warmly welcomes new members**. During the pandemic the team continue offering opportunities to engage through the use of varied means; online through Zoom and YouTube, telephone contact and post.

For further details and Zoom joining instructions, please email [primetime@bhcgodalming.org](mailto:primetime@bhcgodalming.org) or leave a message for the Prime Time Team via the Church Office on: 01483 421267





# LONGACRE SCHOOL

INDEPENDENT PREPARATORY SCHOOL FOR BOYS AND GIRLS AGE 2-11 YEARS

## OPEN MORNING 24 SEPTEMBER

Tours from 9.30am

To register please visit our website or contact Admissions on tel: 01483 893225 or [admissions@longacreschool.co.uk](mailto:admissions@longacreschool.co.uk)

[www.longacreschool.co.uk](http://www.longacreschool.co.uk)

Hullbrook Lane, Shamley Green,  
Guildford, Surrey GU5 0NQ

Nursery places available from age 2 from September 2021

# Allford

BESPOKE  
CABINET  
MAKERS  
*Interiors*

For beautiful, bespoke, fitted or freestanding furniture, Allford Interiors designs and hand crafts innovative solutions for all our clients.

We collaborate closely with you from conception to completion. Each commission is personally designed, created and installed from our workshop in Milford.

Previous commissions include kitchens, studies, bedroom and bathroom furniture, bookcases and creative storage solutions.

Using solid timber or high-quality man-made materials, we can create anything from traditional shaker style furniture to unique contemporary pieces.

For a free design consultation, contact Stephen Allford on 07723717897 or for more information see [www.allford.co.uk](http://www.allford.co.uk)

## R. & R. Roofing

Guildford

Roofing Contractor & General Builder



- NEW ROOFS & REPAIRS
- CHIMNEY POINTING & REBUILD
- SLATING • TILING
- HIGH PERFORMANCE TORCH-ON FELTS
- FLAT ROOFS • LEAD WORK
- GUTTERING • uPVC FASCIAS & SOFFITS
- EXTERIOR MAINTENANCE

FREE ESTIMATES EMERGENCY SERVICE

01932 344660

07956 554604

7 Rivermead Byfleet KT14 7BZ

Email: [russ@rr-roofing.co.uk](mailto:russ@rr-roofing.co.uk)



In June, many of us enjoyed meeting up in person for a walk around the lovely NGS Spurfold garden in Peaslake. It was a beautifully designed and maintained garden, and our very hospitable hosts provided generous wine and canapés. All in all, a very pleasant occasion!



By the time you read this, we will have heard from **Anto Ficatier**, our **Youth Minister**, something about his life before joining Busbridge and Hambledon Church. It was fascinating to hear about the diverse roles he has undertaken in many countries.

We're excited to say that the **summer outing** we had planned for 2020 will now take place **on Thursday 5<sup>th</sup> August** this year! Guildford Tour Guide, Jeff Thomson, will start the tour at **2.00pm** from **Tunsgate Arch** and proceed round the town, pointing out places of particular relevance to '**Leading Lights**' - actors, authors and artists - intimately associated with Guildford. On this intriguing walk, be prepared to 'meet' some of these, with their tales of scandal, fame and other surprises!! **A donation of £5.00 is requested** in support of **Guildford Street Angels**. It may not be possible to arrange a group afternoon tea, but we'll see what we can do to find a cuppa and cake together somewhere afterwards!

We're delighted that **Charli Quay-Barnham**, Head of Fundraising for Phyllis Tuckwell, will give us a talk titled, '**Phyllis Tuckwell – Because Every Day is Precious**' on **Thursday 9<sup>th</sup> September**. **Phyllis Tuckwell** is our chosen charity for 2021, so it would be good to have a 'full house' for this event, to hear all about the vital work done by the team, both at the Hospice and in people's homes. We sincerely hope that this event can be held face to face – more details to follow! Please put the date and time, **8.00pm**, in your diaries!! In the meantime, enjoy the glorious summer weather. We look forward to seeing you soon.

***Our charity for 2021 is: Phyllis Tuckwell Hospice Care***

*For more information, please phone*

*Janet Harvey on 423264 or Kate Kaye on 415296*

*or find us on [www.bhcgodalming.org/groups](http://www.bhcgodalming.org/groups)*



## HEARING AID CLINICS – the Community Hearing

Aid Clinics run by Busbridge & Hambledon Church remain suspended for now. However, due to the easing of some Lock Down restrictions – it is now possible for Community Hearing Champions to offer a one to one service in the garden at the Old Rectory in Busbridge (or in your own garden if you are unable to travel to Busbridge). If your hearing

aids are in need of maintenance, then please do contact Penny Naylor via the Church Office on **01483 421267** or email **[penny.naylor@bhcgodalming.org](mailto:penny.naylor@bhcgodalming.org)** in order to arrange an appointment. Please note that Community Hearing Champions are only able to provide service for NHS-issued hearing aids.



## Busbridge Design & Build

[www.busbridgedesignbuild.co.uk](http://www.busbridgedesignbuild.co.uk)

07968 022526

Your local firm, specialising in high quality new-builds, extensions, refurbishment and all other aspects of building works

Offering exceptional levels of service & attention to detail at competitive prices

Excellent local references and referrals

Contact us today for a quotation or to discuss your requirements



**Donline**  
COMPUTER  
CONSULTANCY



*Donline offers professional computer engineering services to: Small Business, Home Office, & Home Users.*

*Donline can assist with all of your IT requirements: Supply & installation of hardware and software, upgrades, networking, system and data recovery, printing, security, cloud computing, technical support and training.*

Call: Don Tocher, on  
07870-643486 or 02392-989594



**Microsoft**  
CERTIFIED  
Systems Engineer

Or contact Donline, online:  
Web: [www.donline.co.uk](http://www.donline.co.uk)  
Email: [don@donline.co.uk](mailto:don@donline.co.uk)

## RB Carpentry & Joinery



Cabinetry,  
Carpentry &  
Joinery

Kitchen Fitting

General Property  
Maintenance

40 years  
experience

References  
available

Busbridge based

Contact :  
**Rob Beasley**  
0797 7944162

## Pilates in Milford

Mondays: 9:30 am and 10:35 am  
Location: BURTON PAVILION



- Pilates to strengthen the core stability muscles
- Improves posture, balance & co-ordination
- Relieves tension and stress
- Tones muscles and prevents injury
- Complements other exercise & relaxes
- Pre- & postnatal conditioning

*A great way to get in shape. Easy to learn.*

To register call 07767 811074  
Or visit [www.westsurreypilates.co.uk](http://www.westsurreypilates.co.uk)

Helen Roberts, Chartered Physiotherapist  
MCSP, DipAPPhysSport HPC, APPI

# My Walk with FRIENDS INTERNATIONAL

I received this call on Christmas Day 2020, but it wasn't the first time I'd heard from S on Christmas Day. Some years ago, when she was a student at the University of

Surrey, we entertained her to lunch, had a great time, and within a few weeks she was back at her own request to cook us a full-scale Chinese meal for many more people than we had round the table!

Such generosity happens when you get involved in Friends International. Jim and I have had the privilege over 22 years of hosting students from all manner of countries, ranging from Nigeria to India and Kuwait, but the majority have come from mainland China. Just now, with COVID, this hosting isn't possible. But many things are. Friends International Guildford (FIG) have arranged many on-line events from regular social meetings for women, cooking parties, English Conversation courses, on

-line cafes, and we also escort students on country walks, to name but a few. These are instead of the lively coffee mornings, barbecues, firework displays with an explanatory talk, and a Christmas Lights switch-on which cannot happen at the moment. The idea is to introduce international students to British culture, traditions, and the hope is in time to introduce them gently to the reality of the Lord Jesus. One thing you can guarantee, we make a lot of friends!

Last Christmas, when socializing was severely restricted, many students were left isolated on the campus. Lovely as the campus is, that can get lonely. Volunteers and staff from Friends International Guildford stepped forward and offered free hot drinks and many Christmas presents and goodies donated by kind people. And some are offering to do socially-distanced, one-to-one walks with students who would like to get out.

Want to get involved? Contact Riz and express your interest: she'll be delighted to hear from you. ([riz.mohammed@friendsinternational.uk](mailto:riz.mohammed@friendsinternational.uk)) Even if you cannot get out, it is possible to pray at the regular prayer meetings on the last Saturday of the month. Want to dip your toe in a bit further? I volunteered to mentor a student at a course (again on-line) which teaches students how to expound the truths of the Bible to those in an international situation, and I myself am finding the course enormously stimulating.

*Shelagh Godwin*

[https://youtu.be/YcSFCJ3\\_LyM](https://youtu.be/YcSFCJ3_LyM)

Hi, Shelagh, it's S from Shanghai and I am ringing to wish you a very happy Christmas. And, you know, I'm married now!





# Old Godhelman Association REUNION 2021

The 2021 Old Godhelman Association (OGA) Reunion is planned at Godalming College, on **9th October**, from 11.00 to 4.30 followed by a get-together from 4.30 to 11.00 at The Inn on the Lake, Godalming.

The OGA is the official organisation for the former pupils of Godalming County Grammar School.

The main event will include a tour of the building, a two-course lunch and the opportunity to have both real and virtual meetings with school friends.

There will be an opportunity for Zoom calls to people living far away or overseas or those unable to make the journey to Godalming.

For more information, please email Eleanor Andrews (ewandrews3@gmail.com) or visit the OGA website (theoga.org)

busbridge&hambledonchurch 

## Help & Support

### Abuse Support

Call Surrey Against Domestic Abuse 01483 776822 – safety number; if you would prefer to make a call to the church (01483 421267), then we'd be willing to take some discreet information for you and act with you. **If your situation is threatening please ring 999.**

### Financial Relief

Our church charity CFSF (Church Family Support Fund) has been quietly giving financial gifts to people in need and are always grateful to know of anyone in the wider community needing this support. See [www.bhcgodalming.org/c19-givingandsupport](http://www.bhcgodalming.org/c19-givingandsupport) or t: 01483 421267 to let us know of someone in total confidence.

### COVID-19 Support

Help with shopping, urgent supplies or a friendly phone call. Email: [coronaresponse@bhcgodalming.org](mailto:coronaresponse@bhcgodalming.org) or t: 01483 421267



### BUSBRIDGE EVENING WI

Our monthly meetings are held on the 2nd Tuesday of each month.

Contact: Ann Heward 01483 420360

#### Tuesday 13th July

Paul Gillinham will be speaking on Zoom, the subject will be 'A freewheeling Pilgrim through France'

**No meeting during August**

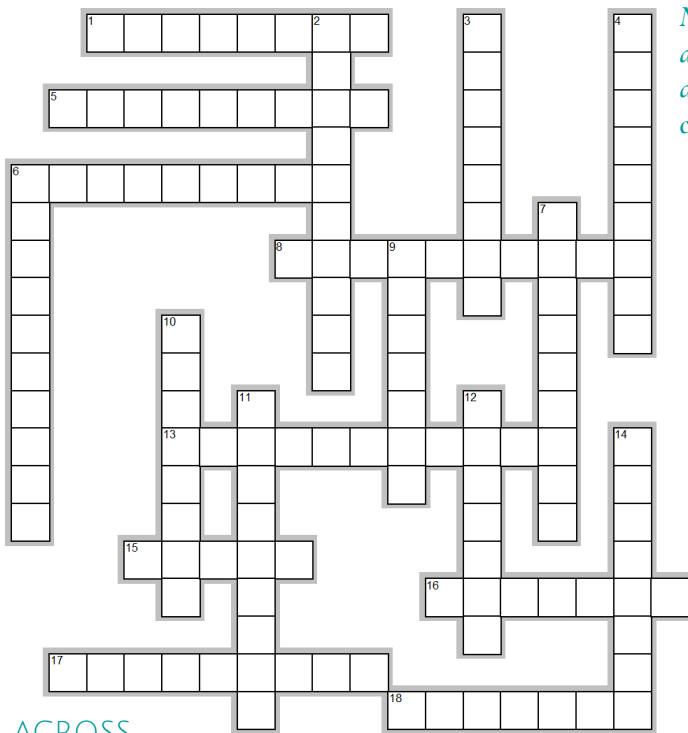
[www.samaritans.org](http://www.samaritans.org)

You can call them free on 116 123 or email them at [jo@samaritans.org](mailto:jo@samaritans.org)

Whoever you are and whatever you're facing, they won't judge you or tell you what to do. They're here to listen so you don't have to face it alone.

*When life is difficult, Samaritans are here – day or night, 365 days a year*

# Local Place Names *Cryptic* CROSSWORD



*Note: Since all these clues are local place names, they do not contain a “straight” clue.*

## DOWN

**2** Having strong accent, table server lost one (10)

**3** Ruth puzzled by code without point (8)

**4** Place half a score on confused Ma leaving hospital (9)

**6** Former PM covered in soot, perhaps (10)

**7** Being occupied endlessly leads to pathway over depression (9)

**9** British Rail brew overcomes Mike before Coventry terminus (7)

**10** Sheep pen for noisy dimwit (8)

**11** Cod relative acquires yellow colour after losing love (9)

**12** Endlessly coy politician with heart of stone (7)

**14** Standard practice leads to an empty destiny (8)

## ACROSS

**1** So his hair should never be messy? (8)

**5** Dodgy dealer lacking Ecstasy killed with a gun (9)

**6** Romeo consumed by novel courted without energy (9)

**8** Looking pale and feeling unwell after intrusion of body odour (10)

**13** Focus, perhaps, follows wheel clamp (11)

**15** At liberty before Tory leader after swapping Right for Left (5)

**16** Undergarment knotted before noon (7)

**17** Poor actor lost blood performing play (9)

**18** Cook like Elizabeth, say, including chopped lime (7)

*Kind thanks to Phil Musk for preparing this crossword for us. Answers on page 33.*

# Honey Landscapes

Garden Maintenance and Construction



Patios & Drives • Hedges  
Stonework & Brickwork  
Fencing • Planting  
Lawns large or small  
Turving & Seeding

Tel: 07952915547  
honeylandscapes@gmail.com

## TUSCAN VILLA

Available for holiday lets

*Between San Gimignano  
and Volterra*

Recently restored Separate Barn  
Sleeps 3/4

Beautiful large secluded villa  
In gardens of one hectare  
Sleeps 8/10

4 large double bedrooms

2 large sitting rooms  
Study, dining room, utility  
kitchen/diner

4 bath/shower rooms  
15 x 6m infinity pool  
Tennis court

[www.ilcolto.co.uk](http://www.ilcolto.co.uk)

Tel: 01483 808105 or  
theresalove440@yahoo.co.uk

Paul Clifford  
Property Services  
Qualified "Part P" Electrician  
B-Tec Trained Plumber  
Plumbing Electrical  
Kitchens Bathrooms

Any job from a refit to a washer or fuse  
Fully Insured References Available

Paulclifford60@gmail.com 07889 073853

0800 804 8044  
DailyHOPE

A free phone line of hymns,  
reflections and prayers

Fed up with Ironing?  
Let the **Ironing Fairy**  
do it for you!



### You are not alone!

Ironing is the most dreaded household chore.  
We regularly heard people wishing for a "ironing fairy"  
to take it off their hands, which is why we started our  
business.

### Why choose us?

- ✓ Free collection & delivery
- ✓ Turnaround in 48 hours
- ✓ Professional service

### We can work around you

Whether you require a regular weekly or 'on demand'  
ironing service.

01483 428044 07809 401794

[www.ironingfairy.net](http://www.ironingfairy.net)







*Until 10th July* the exhibition celebrating the centenary of the Museum continues.

*From 13th of 31st July*

Godalming Photographic Club will return with their annual exhibition of varied and high quality prints.

*In August* the exhibition will be on Jack Phillips & the Titanic, including children's activities.

Children can enjoy exploring Godalming using the two new activity packs available at the Museum. Younger children can explore around the playground in the park by the river. Older children can stand at the Pepperpot and observe what they see around it. A donation to cover costs of the packs would be appreciated. The Museum has new entrance opposite the Pepperpot.

Opening times are at present:

**Tuesdays, Wednesdays and Saturdays, 10am to 4pm**

There are plans to open for a further day if possible. The Local Studies library is open on Tuesdays.

Please check the website

**[www.godalmingmuseum.org.uk](http://www.godalmingmuseum.org.uk)**

for further details and updates.



## Local **FOODBANKS**



### **St Mark's Foodbank**

St. Mark's Community Centre/Church,  
Franklyn Rd, Godalming, GU7 2LD

Welcomes donations & open:

Mon/Tue/Wed 9.30am-2pm

Thursday 10am-1.30pm

There continue to be **trolley collection** points at Busbridge Church and Tuesley Lane (at the entrance to Godalming College) for donations for **St Mark's Foodbank & Wilfrid Noyce Community Store** on **Tuesdays 8.30am - 11.30am.**



*Local Place Names Cryptic Answers*

**Across** 1. HASCOMBE 5. ALDERSHOT  
6. BROOKWOOD 8. WANBOROUGH 13.  
SHACKLEFORD 15. FLEET 16. TONGHAM  
17. HAMBLEDON 18. FRIMLEY

**Down** 2. BROADWATER 3. HURTMORE  
4. PUTTENHAM 6. BLACKHEATH  
7. BUSBRIDGE 9. BRAMLEY  
10. DUNSFOLD 11. CAMBERLEY  
12. COMPTON 14. NORMANDY

# SMALL ADS

**VERY LOCAL TOP QUALITY TWO YEAR OLD HARDWOOD LOGS FOR SALE.** Felled & processed just a mile from centre of Busbridge. Pick-up load (1.2cm) £90, Dumpy bag (0.8cm) £70 delivered to your drive. **andrew4logs@hotmail.co.uk** or call Andrew on: **01483 424934** or **07952 429071**

**GARDENER TRAINED WITH THE RHS, HARD WORKING AND RELIABLE.** Will undertake weeding, pruning, mulching and bed work plus more from £20 per hour and medium hedge cutting service priced per job. Contact Matthew on **01483 421547**

**HANDY HECTOR THE ODD JOB MAN.** Anything considered **07506 598939**. Please see my website for more information: **www.easycvguide.com/handy-hector**

**MATHS TUTOR** Experienced tutor and teacher now has sessions available. All levels up to GCSE. Including preparation for Senior School entrance exam. Non-Verbal and Verbal Reasoning also offered. Please call Linda on **07891 708202** or email **linda.mlja@sky.com**

*Professional, confidential & sympathetic counselling*

**Gill Brennan**

MBACP (Accred), FdA (Hons), BA (Hons)  
07947 424 538  
gillhbrennan@gmail.com  
www.godalmingcounsellor.com



**PC Doctor Godalming**  
Fixing computers of all shapes and sizes

If your computer is run down, unreliable and generally out of sorts then why not call for professional help and advice in your own home. All types of computer or network problems dealt with on a "No Fix No Fee" basis.



79 Pullman Lane, Godalming, GU7 1YB  
Tel: 01483 424378 | 07876476990  
email to: [mike.lagan@pcdocgo.co.uk](mailto:mike.lagan@pcdocgo.co.uk)



MEMBER OF THE ROYAL SOCIETY OF FOOT HEALTH PROFESSIONALS



Karen Regan  
Heart & Sole


**KAREN REGAN DIPFHP MCFHP MAFHP**  
MOBILE FOOT HEALTH PROFESSIONAL  
[WWW.HEARTANDSOLE.SITE](http://WWW.HEARTANDSOLE.SITE)  
07776309567



**Vanessa Edwards Hypnotherapy**  
Cognitive Hypnotherapist  
DipChyp HPD NLPprac

[www.vanessaedwardshypnotherapy.co.uk](http://www.vanessaedwardshypnotherapy.co.uk)  
[info@vanessaedwardshypnotherapy.co.uk](mailto:info@vanessaedwardshypnotherapy.co.uk)  
07523101952

I specialise in helping women with anxiety, stress, confidence issues and weight loss. I also work with phobias, OCD, bad habits, smoking, depression and insomnia.  
If your issue is not listed here please contact me.



**Printed by Linnerlake 07590 047750**  
[www.linnerlake.co.uk](http://www.linnerlake.co.uk)  
[linnerlake@gmail.com](mailto:linnerlake@gmail.com)

We ask you to please make sure that those people who are the focus in photos have given their consent to be included in our publication & on our website; in the case of minors we ask that this is parental consent. "The Bridge" would like to thank advertisers for their support, but to make clear to readers that it does not offer any endorsement of the goods or services advertised. Views expressed in the articles are not necessarily those of the Editor or Busbridge Church. The Editorial Team reserve the right to edit any articles submitted for consideration for publication.

## EDITORIAL TEAM

Cathy Brook (Editor) 420633  
Jacky Beale (Small Ads) 423768  
Christine Payne 417320

Lorna Sherwin  
Lesley Reeves (Treasurer) via email at:  
[bridgefunds@btinternet.com](mailto:bridgefunds@btinternet.com)

Write to us:  
c/o Church Office, The Old Rectory, Old  
Rectory Gardens, Godalming GU7 1XB.  
St John the Baptist Church  
Rector: Rev Simon Taylor  
01483 421267

## COPY DATE

SEP/OCT 2021 EDITION

WED 11TH AUGUST

PUBLICATION DATE: FRIDAY 3RD SEPT

## Advertising

**SMALL ADS** are designed to advertise local services.

£5 per insert , 40 words maximum.

For Sale items £2,

20 words maximum.

Please contact Jacky at:

**[jackybeale@hotmail.com](mailto:jackybeale@hotmail.com)**

**DISPLAY ADVERTISING** is for businesses who wish to advertise in full, half, quarter or eighth page format.

We deliver free of charge to over 1850 local homes. Please contact Cathy at:

**[editor.atthebridge@gmail.com](mailto:editor.atthebridge@gmail.com)**

We reserve the right to decline advertising or payment for advertising at our discretion.

### QUARRY HILL STORES

17 Quarry Hill



Paper Boys and Girls Required in Busbridge

Newspaper Delivery Service in Busbridge  
Contact: Mr S. Patel

Tel: 01483 416938

### g b j @ home

Home boarding & day  
care for smaller dogs



We take care of them when you can't  
Familiar local walks

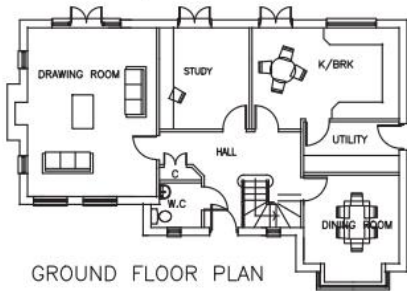


Call  
Lesley on 0752 1535 079  
[gjbathome@btinternet.com](mailto:gjbathome@btinternet.com)





FRONT ELEVATION



GROUND FLOOR PLAN

## PLANNING & DESIGN SERVICE LLP

Architectural drawings for  
Extensions, Alterations &  
New Build

Free No Obligation Quotations

**Tel: 01483 417555**

**Mob: 07818 014357**

[www.architecturesurrey.co.uk](http://www.architecturesurrey.co.uk)

[simonplanning.design@btinternet.com](mailto:simonplanning.design@btinternet.com)



Free valuations Monday-Friday:  
9:30am-5pm

# Ewbank's



Surrey and Hampshire's Premier Antique and Specialist Auctioneers

Toys & Models: 8 July  
James Bond 007: 8 July  
Antique & Collectors': 14 July  
Asian Art: 15 July  
Vintage Fashion & Textiles: 15 July  
Decorative Arts: 29 July  
Contemporary Art & Editions: 29 July  
Antique & Collectors': 11 August  
Entertainment & Memorabilia: 12 August  
Stamps, Postcards & Collectables: 25 August  
Fine Wines & Spirits: 29 August  
Car Auction & The Transport Sale: 5 September

Accepting consignments now

**01483 223101**

Burnt Common Auction Rooms, London Road, Send, GU23 7LN

[info@ewbanks.co.uk](mailto:info@ewbanks.co.uk)

[www.ewbanks.co.uk](http://www.ewbanks.co.uk)