

The Bridge

MAY & JUNE 2019



Spanning the
COMMUNITY
in Busbridge

www.bhcgodalming.org/thebridge

PRIOR'S FIELD

GODALMING SURREY



GSA Girls' Boarding and Day School 11-18

*They mean what they say
about encouraging talent!*

- Good Schools Guide 2018



**A DISTINCTIVE ROUTE TO HIGH
ACHIEVEMENT FOR YOUR DAUGHTER**

Call now to book your place at an Open Event:
Open Day: Saturday 5 October 2019 10.00am - 1.00pm
01483 810551 www.priorsfieldschool.com

#believe #achieve #succeed

Registered Charity No. 312038

WHAT'S INSIDE

Looking ahead, we're planning another article celebrating local wildlife in our next edition, so please email or send us any photos you'd like to share.



PAGE 12 *Meet Lisa Olsworth-Peter*
Busbridge & Hambledon Church's new music pastor.

PAGES 14-15 *Milford Hospital*
Learn more about what goes on at Milford Hospital from the League of Friends.

PAGE 16 *Pentecost*
Our Curate, Dave Preece, sheds light on Pentecost.

PAGE 20 *The Cellar's birthday*
Godalming Café, The Cellar, celebrates 40 years.

PAGES 22-23 *Painting in pastels*
Busbridge artist, Nancy Wilks, explains the inspiration behind her latest exhibition.

FRONT COVER PHOTO: Iris at Winkworth Arboretum by kind courtesy of Chris Payne

Busbridge Infant School
SUMMER FETE 12-3PM
HAMBLEDON ROAD
GODALMING GU7 1PJ

SATURDAY 6TH JULY

150 YEARS HAMPTONS INTERNATIONAL

Come and join us for a family day out. Watch live entertainment from AllStar Choir, Boogie Pumps and Stagecoach. Enjoy mouth-watering delights from our BBQ provided by Two & a Half Pigs Ltd. and refreshments from the bar.

*Coconut Shy
Whack the Rat
Raffle
Beat the Goalie
Bouncy Castle*

*Craft Stalls
Bottle Tombola
Hook a Duck
Ice Cream Kiosk
And lots more...*

NEWS & EVENTS *Round Up*

Bridging *the* GENERATIONS

St Hilary's Preparatory School has teamed up with Jubilee House Care Home in Godalming as part of a new outreach project to promote intergenerational work between young children and people living with dementia. The four year olds from the school's Kindergarten class visited the care home's residents and will continue to do so on a weekly basis. It is believed that regular contact between the two generations will be of great benefit to both pupils and residents alike.



Mrs Jane Whittingham, Headmistress, said "We believe our pupils will benefit from the new experience and that it will help them in their language development, building relationships and boost their confidence as well as giving them empathy for the older generation. We hope the residents in turn will reap the benefits of interacting with the children. We understand that the contact with the children will enable them to feel less isolated, support their memories, help them feel valued and encourage improved health benefits, both mentally and physically."

Totka Zhelyazkova, Home Manager at Jubilee House, said, "The communication, interactions and affection between the residents and the children was incredibly moving to see – they loved spending time with each other."



Mothering SUNDAY

Mothering Sunday posies were handed out to the congregation on 31st March at Busbridge Church services.



Credit: Image BBC EastEnders

Godalming to *the* EAST END

An alumnus of Godalming College, Max Bowden, has been cast in the role of Ben Mitchell in *EastEnders*, soon to be appearing on our TV screens. Max left *ClassAction*, Godalming College's drama and theatre department training company in 2013. Whilst training he appeared in a diverse

range of productions including *Cabaret* to *Punk Rock*, *Lord of the Flies* and *The Laramie Project*. Max also undertook solo performance work in straight drama and musical theatre for his Performance Extended Project Qualification. Immediately after leaving, Max went into the cast of the BBC's *Waterloo Road*, *Casualty* and *Doctors*. He also undertook a national stage tour in *Birdsong*. Max explained, "ClassAction is one of the main reasons I was able to move on and pursue a professional career in the arts. Having been nurtured and pushed under the guidance of ClassAction I formed a professionalism, attitude and work ethic during my time training that I took with me into full time work. "



The 5th Dan Eley Foundation spring concert, featuring the talents of Godalming College music students, raised £1700 in March for the local charity. The funds will be directed towards programmes supporting youngsters at risk of marginalisation through life coaching and job training.

Dan had recently returned from Colombia where he had been celebrating the 500th student educated by his Foundation and was present at their partner charity's (FEDUT) inauguration of their 14th and 15th accountancy course and 2nd marketing and sales course. Ninety new students will now embark on the intensive 8-month apprenticeship scheme.

New plans for WINKWORTH ARBORETUM

The National Trust at Winkworth Arboretum is submitting plans for a new visitor centre to include a new café, shop, visitor reception area and toilets. A car park will also be created away from the Hascombe Road which will alleviate traffic and provide a new landscaped entrance to the Arboretum. This will enable the existing car park to be restored, improving first impressions of the Arboretum upon arrival.

The plans have been based on extensive consultation carried out a few years ago and the new plans are now on display at the Arboretum. The National Trust has been presenting its proposals to the local community throughout March and April and are delighted with the feedback they have received. They are now finalising the plans before submitting them to the local planning office in May.

Maggie Morgan, Interim General Manager at Winkworth, said: "The Arboretum is one of the most beautiful places in the area and it needs sustainable income to ensure it thrives for future generations to enjoy. We are confident that the new facilities will not only be enjoyed by visitors and local residents but will also generate funds for the long-term benefit of this special place." You can find out more on the website:

www.nationaltrust.org.uk/Winkworth-arboretum

Steve Bolton, Project Manager



Taking ROOT

On 14th March, our Year 5 class at St Edmund's School had a rather damp day tree planting at Ladywell Convent, organised by Roots for the Future. In addition they were joined by some Sisters from the Convent, estate staff and neighbours; a cross generational event. They were kept extremely busy with hundreds of new hedging saplings to plant including dog rose, birch, cherry, plum cherry, rowan & spindle. The children really enjoyed being outdoors in the woodland and identifying the trees growing. Thank you Year 5, it will be lovely to watching the hedge that you planted growing!

*Elizabeth Higgins,
headteacher*



PRECIOUS LARVA

With the gardening season in full swing it's possible you may inadvertently encounter this unfamiliar large larva in a pot or in the compost heap. Be assured they pose no threat to your garden, rather they are the precious larvae of a **stag beetle**. They can spend

up to six years in this larval stage feeding on rotting wood and soil. They are typically anything from 3-8cm in length and are easily differentiated from the much smaller, not so helpful, vine weevil (which is the size of a maggot). If you do disturb them, try to replace them where you found them near to rotting wood (they love oak).



Emery &
Orchard

ESTATE AGENTS

Passionate about property

SINCE 1993



EMERY & ORCHARD

Godalming's **Local Independent Agent**
Established for over **25 years.**

Property to sell in Godalming
or the Villages?

Then contact Tony Emery
or Jeremy Orchard on
01483 419 300
to arrange a
Free Market
Valuation.

20 High Street
Godalming
GU7 1EB

www.emery-orchard.co.uk



A *Blast* FROM BUSBRIDGE'S Parish Past JUNE 1901

NOTES.

Tuesday, May 15th, was an interesting day to Busbridge people, because it was the 21st birthday of the Hon. Violet Monckton, the owner of the Busbridge estate in succession to her uncle, Mr. Ellis Gosling. On the following day Miss Monckton, accompanied by her father and mother, Lord and Lady Galway, and her brother, arrived at Busbridge, and was received at the lodge gate by a large number of parishioners, who had turned out to give her a welcome. We offer her our hearty good wishes, and shall hope to have the pleasure of seeing a good deal of her at Busbridge in the future. She was good enough to send to the Rectory a large piece of her birthday cake, which was divided among the school children.



Busbridge Parish Register

BAPTISMS

3rd March 2019

Phoebe Hann
Charlotta Durston

17th March 2019

Monty Connold
(St Peter's, Hambleton)

FUNERALS

15th March 2019

Alan Jones (Crematorium)

26th March 2019

John ('Jack') Canty (Crematorium)

11th April 2019

Revd David Mace



Left : It was the happy occasion of Becky's (nee Bradley) marriage to Charlie Auton in February this year in Westcott, Dorking. Becky, Busbridge and Hambleton Church's 4-11's Children's Ministry Leader, is leaving the parish for pastures new. We wish her and Charlie every blessing and thank her for all the enthusiasm, energy, vision, and fun that she brought to her role with the children. She will be much missed.

You may have spotted the purple hearts around the Pepperpot and High Street in Godalming? Tuesday, 26th March was International Epilepsy Awareness Day (Purple Day) when local charity, The Meath Epilepsy Charity, aimed to raise awareness of the condition. Local shops, schools, organisations and individuals joined in by wearing or displaying purple and supporting the event through fund-raising.





FRIENDLY AND APPROACHABLE SOLICITORS IN GUILDFORD AND GODALMING FOR YOUR FAMILY AND YOUR BUSINESS

Long established in Sussex, DMH Stallard's Surrey office is staffed by partners and teams who have long practiced in and around Guildford and Godalming.

**Wonersh House, The Guildway, Old Portsmouth Road,
Artington, Guildford, Surrey GU3 1LR (parking available)**

**T 01483 302 345
www.dmhstallard.com**



St Catherine's, Bramley

GSA Day & Boarding School since 1885 | 4 - 18 years
Guildford GU5 0DF | www.stcatherines.info

Busbridge Infant School NEWS

We have had a busy and very successful term... thinking about others in our wider community as well as building on and celebrating our learning. We have had many fundraising fun events this term. We had a very energetic morning bouncing

for books in the school hall. This involved two bouncy castles, a small army of parent helpers to count bounces and lots of very excited children! We are so grateful for all our families' generous support which will allow us to top up our reading stock with many, many new titles!

We also raised a fantastic total for Comic Relief. Our School Council were busy selling red noses. They also decided to organise year group discos during the school day. The children had a lot of fun taking part and coming to school in their own clothes.

Our children have been busy learning new songs for our annual spring concerts. These are always very popular and the children sang beautifully and filled our hall with spring time cheer. The Reception children looked very sweet in their animal costumes as they sang a variety of farm themed songs following their trip to Bocketts Farm. The Year 2 children also took part in a 'Spring Sing' at St Catherine's School and performed with confidence and enjoyment in their splendid auditorium.

Our school had a bit of a face lift in March and everyone one was very patient coping with scaffolding and the extra noise. However, it was definitely worth it. We have had many of our very draughty old windows and doors replaced ensuring our school is more energy efficient and secure as well as making our building look brighter and feel warmer. Next up over the Easter break is some long awaited work to improve drainage on the playground! We would like to wish everyone a very restful and enjoyable Easter break.

Katherine Smith, headteacher



Reception children taking part in their Spring Concert



GODALMING GOOD NEIGHBOURS
Launching soon!

Do you have what it takes to be a good neighbour? Volunteer now and be part of an exciting new team!

You need to be over 18, have a valid driving licence (if driving) and want to help. Interested?

Contact

Rachel 07943 274 461
godalminggoodneighbours@gmail.com





Christian Aid Week 12 - 18th May

There will be a street collection in
Godalming High Street
on 16th, 17th and 18th May

Christian Aid holds a vision of a better world, free from poverty and climate change. Where everyone has enough to eat, and can live without fear of their home being destroyed. But right now, millions of the world's poorest people are feeling the worst impacts of climate change, and experts predict more floods, drought and extreme weather patterns to come. For those living in poverty, this means more hunger, conflict and insecurity, and a more uncertain future for us all. Christian Aid began The Big Shift campaign in 2015 after the Paris Summit, moving away from dependence on fossil fuels to renewable energy. They are asking for your support, commitment and money.

"Who can stop climate change? We can. We have a responsibility to do so that began when God commanded the earliest human inhabitants of the Garden of Eden to 'till it and keep it'. To keep it; not to abuse it, not to destroy it."

Desmond Tutu

Ashley & Lewis
Heritage Paint Merchants of Godalming



Perfect Match

www.ashleylewis-paint.com

45 Farncombe St, Godalming GU7 3LH | 01483 351050 | sales@ashleylewis-paint.com

Get to know Lisa Olsworth-Peter

BUSBRIDGE & HAMBLEDON CHURCH'S NEW MUSIC WORSHIP PASTOR

Lisa has recently joined Busbridge & Hambledon Church in her new role as Music Worship Pastor. Music was part of her early life; her mum was a pianist and her stepfather an organist who introduced Lisa to the Church. She is married to Ed who is ordained and is the National Advisor for Pioneer Development and they have 3 children. Working alongside Ed during his time as a parish priest enabled Lisa to go deeper into her own ministry and develop the gifts God has given her in worship leading, nurturing others and helping people to connect with God through music and the creative arts.

Having always had a love for engaging with and helping people, Lisa has wanted to be in Church Ministry and serve God. Two years into her degree, she took a year out to work for a theatre producer. She then finished her degree at Newcastle and worked her way up in a theatre from Box Office to Manager's Office very quickly. Not content to sit back and rest for a while, Lisa always has many ideas to move forward. She started a summer school for children and saw numbers rise to 450. West Side Story was to be their big production and a student spoke to Lisa before opening night suggesting they pray. Initially another eight joined her, but on the last night was



encouraged as the whole company chose to come together to pray.

While in a play with the RSC, Lisa got to know Dame Judy Dench. Later on, when Lisa was in Les Miserables in the West End, she put her costume on and found Judy

Dench's name inside! Dame Judy was in a play in the adjacent theatre and during a break in her play, had gone next door, changed into a different costume, been on stage for a few minutes, then gone back next door to finish her play! No-one in the audience realised, but Dame Judy had always wanted to be in Les Miserables and for a few minutes, she had her wish!

Always busy, either with her 3 lovely children or making her ideas happen, Lisa does enjoy bit of down time when she can. 'Grey's Anatomy' is her go to box set and 'The Holiday' her favourite film. A good roast with mint sauce is a favourite meal (doesn't have to be lamb!) Exploring France is one of her favourite holiday destinations, with its cobbled streets, red wine, cheese and bread.

I agree with everything you like about France, Lisa. Looking forward to hearing more about your future plans at Church.

Lorna Sherwin



Join Lisa for **A Gospel Choir Workshop**
or **Sing it Out**

(A local pop gospel choir held fortnightly during term-time)
Details and timings at : www.bhcgodalming.org or Tel 01483 421267



Sunrise: A Great Place to Call Home

Living in a residential care community like Sunrise, it's literally home-from-home. Every resident is encouraged to bring in their own furniture, and their pets. High quality care and support is provided in an environment where residents can make new friends and enjoy a variety of events.

Our programme of activities each day offers a full social life, from musical entertainment to a pub quiz, tea dance to art and crafts, games to flower arranging.

Join in as much or as little as you like – our desire is that residents live a happy life that suits them.

Call us on
01483 604099
to book a tour.

Sunrise of Guildford
Astolat Way, Peasmarsh,
Guildford, Surrey GU3 1NE

SunriseGuildford.co.uk

SUNRISE
SENIOR LIVING
GUILDFORD



MILFORD HOSPITAL

and the

LEAGUE OF FRIENDS

Milford Hospital was opened in 1928 as the County TB Sanatorium and continued as such until antibiotics transformed treatment for the disease. It developed as a chest hospital before becoming a hospital for the elderly and is now a small rehabilitation unit. The hospital is an integral part of community services in the Guildford and Waverley area and is the centre of excellence for elderly care, with a multi-disciplinary team to address their complex needs. Service delivery is provided by a trust between the Royal Surrey County Hospital and a consortium of Guildford and Waverley GPs, ProCare. The hospital has two wards with capacity for 34 beds. Staffing difficulties have resulted in the number of beds being reduced to 20 but it is anticipated that this be a temporary measure. The clinical care on the wards is led by GPs working closely with the nursing and therapies staff to enable patients to return to independent living or residential care as soon as possible.

A range of outreach and out-patient services are run from Milford. The Health Visitors are based there, as are the specialist nurse practitioners for heart failure, MS and Parkinson's who run routine clinics. Podiatry clinics are held twice weekly. The best known community facility operated on the site is the X-ray unit which is open every morning and is walk in for chest and by appointment for other X-rays. The League of Friends is working to ensure the long term future for this service, actively participating in the consultation regarding demand and location of supply of X-ray services within the Guildford and Waverley Care Commissioning Group area. The Diagnostic and Treatment Centre offers ongoing care and runs various courses, for example for those prone to falls, speech and language group sessions, and managing Parkinson's. Its remit is to be maintained and enhanced.



In 2014, a plaque was installed by the Comedy Society of Great Britain to Ray Galton and Alan Simpson who started their comedy writing career whilst TB patients at Milford and went on to write such classics as Hancock's Half Hour and Steptoe and Son.

Some of the future plans for Milford are aimed at keeping patients out of acute

hospitals by providing home care or as a GP admission to Milford. A Community Coordination Centre was established in December 2018 and a Crisis Response Service started in March which will ensure patients are seen in the community within two hours.



Summer garden party



U3A Ukulele group playing to patients

The League of Friends supports the hospital by providing facilities and amenities for patients and staff that the NHS does not supply. Amongst other things we:

- *have provided benches along the walkway from the car park;*
- *maintained the courtyard garden, its fountain and all the furniture;*
- *provided the TVs in the wards and cassette/CD players for audio books;*
- *run a weekly library service with large print books;*
- *hold a summer party for patients and their visitors;*
- *provide a Christmas present for all inpatients and a curry lunch for staff;*
- *bought software for the speech and language therapists to use with patients;*
- *and had the WiFi installed.*

Our current major project is to purchase a specialist light projection unit and software that projects different patterns, leaves, bubbles etc onto a table, encouraging patient participation, coordination and cooperation. We welcome help on our stalls at Milford and Witley Fairs, and the hospital welcomes volunteers to come onto the wards to participate in activities with patients. Further information on what we do and joining the LoF can be found at:

www.milfordhospitalleagueoffriends.com

Appliance Service and Sales

- Repair of most main makes
- Built-in and Freestanding
- New appliances with installation
- * Built in and American F/F

Checkatrade.com
Where reputation matters

**Cooker/Oven
Dishwasher
Washing Machine
Tumble Dryer
Fridge/Freezer ***

Elstead (01252) 705198

www.applianceexpert.co.uk



Dave Preece,

CURATE, BUSBRIDGE CHURCH

Hello! It's been a while since I last wrote in the Bridge Magazine so it is a pleasure to be appearing on the pages again. We're now firmly in spring and there are signs of new life all around us. I have particularly enjoyed seeing a family of jays around Busbridge and seeing flowers blooming.

We have recently celebrated Easter in which we remember Jesus' death on the cross which makes us right with God and his resurrection which defeats the power of death. Jesus' resurrection is the ultimate sign of new life.

As a church we are about to celebrate Pentecost (Sunday 9th June) and I thought I would take the opportunity to explain a bit about what Pentecost is and its significance, and if you read on you'll find out why we have a second bank holiday in May...

After Jesus' resurrection on the first Easter he spent 40 days appearing to his disciples (followers) and then ascended into heaven (known as the Ascension). Jesus had told his disciples to 'wait for the gift [God] promised... you will be baptised with the Holy Spirit' and then 'you will receive power when the Holy Spirit comes on you; and you will be my witnesses in Jerusalem, and in all Judea and Samaria, and to the ends of the earth.' (Found in the first chapter of the book of Acts in the Bible). It all sounds a bit confusing this talk of gifts, the Holy Spirit and receiving power but hopefully it will become clearer.

Pentecost is Greek for 50 – it was 50 days after the Passover festival/Easter. The disciples did as they were told and when the day of Pentecost came the disciples were gathered in one place. There was a sound like a blowing wind, and what looked like tongues of fire rested on each of the people there. Each of the disciples was filled with the Holy Spirit and was given power to speak in different languages. The disciples were in Jerusalem, and at that time there were many different people from many different countries and the disciples were able to share the good news of Jesus with all the plethora of languages present.

It is really significant in the life of the church as at Pentecost the disciples received power to spread the gospel to the ends of the earth. It is the same mission that Christians are called to today. It is also an occasion to celebrate the Holy Spirit – who is God and part of the Trinity – and an opportunity to celebrate the Holy Spirit empowering us.

Pentecost is sometimes known as 'Whitsun' and different websites will give you a whole host of reasons as to where that name came from, I can offer no help here. However I mention it because the Monday after Pentecost/Whitsun is sometimes called Whit Monday. It was a bank holiday in the UK until 1967 and in 1971 it was replaced by the fixed, second May bank holiday. So the second May bank holiday is a day to celebrate the power of the Holy Spirit enabling the church to spread the good news of Jesus' life, death and resurrection. Perhaps this spring you could reflect on what gifts God has given you, and where you could share the good news of Jesus Christ as the disciples did so many years ago.

Cranleigh Tiles & Bathrooms

246 High Street, Cranleigh, GU6 8RL



Whatever the budget, from non-branded basics and essentials to more sophisticated designer products, our family-run bathroom showroom lead by Craig Cooper is here to help. We offer free, no obligation estimates and advice on everything bathroom related.

Bathroom Essentials • Showers • Toilets & Washbasins • Baths
Wet Rooms • Lighting • Tiles & Flooring
Design & Installation Available

Showroom open
9am to 5pm Monday to Saturday

Telephone 01483 272727
craig@cranleighbathroomstudios.co.uk
www.cranleigh-bathroomstudios.co.uk



WILD GARLIC HUMMUS

When it's pouring with rain, it's easy to feel fed up. But when spring comes around and that wet, muddy ground suddenly bursts into life and presents us with a carpet of emerald green, lush wild garlic, you'll forget about the squelchy walks because it's time to start foraging.

At this time our house is in revision mode with hard-working teenagers trying to cram everything into the last remaining weeks before exams. They need regular fuelling and this wild garlic hummus is perfect. For an instant re-charge, serve with a pile of lightly toasted crusty bread far away from a paper-strewn desk.

Feeds 4 as a snack.

INGREDIENTS

- 1 tin of chickpeas, drained
- 40g wild garlic leaves, roughly chopped
- 3 tbsp tahini
- Juice of 1 lemon
- 50ml cold water
- ½ tsp. Maldon salt
- ½ tsp. olive oil plus extra for drizzling
- Good pinch of smoked paprika

Sam's new book *The Tin and Traybake Cookbook* is out now.

- 1 Put the chickpeas, wild garlic, tahini & lemon juice into a food processor and blitz into a paste. While the motor is still running add the water and oil down the feeder tube. Process until very smooth, adding a little more oil if needed. Add the salt and paprika, taste and add more if needed, drizzle with olive oil and serve with toast.



samgatesfood



@samgatesfood



www.samgatesfood.co.uk



SATURDAY 18TH MAY

Annexus String Quartet from Guildhall School of Music and Drama will be performing two quartets by Haydn and Mendelssohn, among other works.

SATURDAY 22ND JUNE

A vocal evening-A Night at the Musicals. Including Hannah Macpherson accompanied by Tom Knowles on the piano.

Both concerts will be held at Godalming Baptist Church, GU7 1BA commencing at 6.30pm.

These are FREE concerts with a retiring collection.
Reservations advisable

at www.conservatoireconcerts.org.uk or via Suzanne Cacciottolo on 07940013314



Conservatoire Concerts



Open Morning

Friday 7th June 2019



St Catherine's Prep, Bramley

GSA Day & Boarding School since 1885 | 4 - 18 years
Guildford GU5 0DF | www.stcatherines.info

Fully Insured

Fully Qualified

**Corrective
Surgery**

Felling

Reducing

Dismantling

Pruning

**Hedge
Trimming**

Thinning

Stump Grinding



Julian Draper NCH Arb

Tel 01428 681978 Mob 07968 827711

forkingbranches@hotmail.com



The CELLAR CAFE

It's amazing that the Cellar Café, in Crown Court in the centre of our town, is this year celebrating its fortieth birthday – we give thanks to the Lord Jesus still to be serving the local community in His Name!

40th

We are celebrating this special anniversary with a service at St Peter and St Paul Church on Sunday 7th July commencing at 10am, followed by a party in the afternoon on the Phillips Memorial Park – please come and join us

The Cellar is a very special café which is open to everyone, but with the principle objective of providing a caring, friendly and supportive meeting place for the lonely, the vulnerable and the marginalised in our community.

The Cellar is part of a local community support network - we like to think of ourselves as the pastoral heart of Godalming - and people are often referred by local GP practices, Social Services and Churches. The Cellar also has close contact with groups such as Rethink, the Meath Epilepsy Trust, and the CAB. We support those in our community who suffer with mental health problems, alcoholism, drug addiction and one of the biggest problems - loneliness. The Cellar offers acceptance, support and understanding and above all inclusion.



The cost of food and drink is kept as low as possible, and a free simple meal is always available for those in

real need. An art group started by the Cellar staff provides the opportunity for people to find fulfilment and friendship, together with a sense of purpose and we have an upstairs room which provides a place for private discussion, counselling, prayer and a quiet refuge.

We rely on donations and grants as well as organising fund-raising events. You can help us by regularly donating on our 'Virgin Money Giving' platform or by baking a cake or volunteering some time to help in the Cellar – come and visit us, we are in Crown Court – you would be most welcome.

Simon Crowther, Trustee

www.thecellarcafe.co.uk – info@thecellarcafe.co.uk - 01483 417097



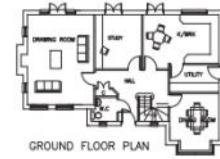
- Live in Care
- Respite Care
- Palliative Care
- Specialised Care

info@carteblanchecare.co.uk
www.carteblanchecare.co.uk



Call us on

**07467
606418**



PLANNING & DESIGN SERVICE

Architectural drawings for
Extensions, Alterations & New Build

Free No Obligation Quotations

Tel: 01483 417555

Mob: 07818 014357

www.architecturesurrey.co.uk
simonplanning.design@btinternet.com

we are prepared for greater things



To reserve a place, please book at
www.barrowhills.org/openmorning
or contact Pauline on 01428 681032
or registrar@barrowhills.org



Barrow Hills
SCHOOL

ROKE LANE, WITLEY, SURREY GU8 5NY
WWW.BARROWHILLS.ORG



A prep school and nursery for girls and boys aged 2 - 13



Godalming MUSEUM

A Sense of Place - Sue Colyer

From 7th May to 25th May

Sue Colyer's passion for watercolour and its unique qualities enables her to paint the subject she loves - nature in all its glory. Her paintings are a personal response to a subject which may invoke a similar or different emotion in the viewer, allowing the subject to be the inspiration of the painting rather than the resulting image.

Compton Artists

28th May to 15th June

Compton Artists are all members of a dynamic art class who meet at Compton Village Hall under the leadership of Ronnie Ireland. The members have diverse approaches to their subject matter, choice of media and style which provides stimulation and new ideas.

Godalming Around and About: Painting in Pastels

18th June to 6th July

Busbridge resident Nancy Wilks' third exhibition at the Museum. Nancy kindly explained to *The Bridge* magazine her inspiration behind her recent work:

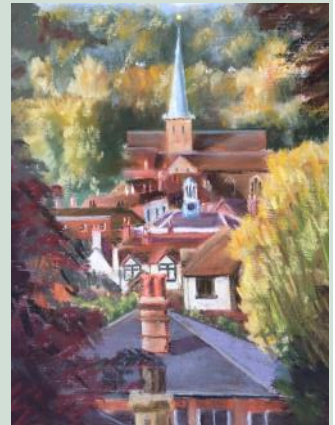


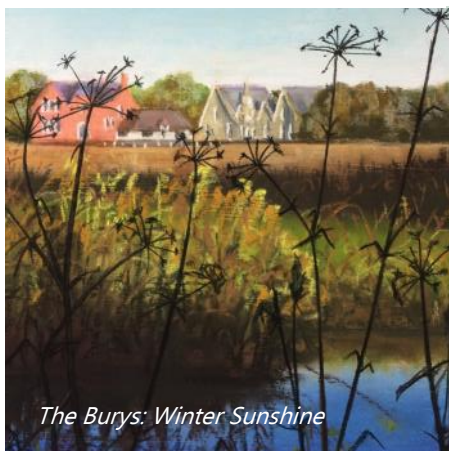
"We live in an exceptionally lovely little town, and in my pictures I try to capture something of its charm in special moments: a glimpse though an alleyway, a glance through a window, the cast of light. All my paintings begin as photos – taken with an eye to composition and colour. Weather and time of day are important – low sunshine gives a clarity missing in the middle of the day; stormy skies too have their appeal. Signs of life add scale and interest – figures can transform a picture – as can vehicles and animals.

I work in pastels for many reasons. Firstly: drawing. I've always enjoyed sketching (quite quickly) – preferably with a really "soft" pencil, graphite-stick or charcoal – then it's just a short step to pastels.

Then there's the speed. Have you ever noticed that those quick courtroom sketches - where cameras aren't allowed - are always pastels? Rapid sweeps across the paper can give surprisingly sharp outlines, followed by speedy blocking in of light and shade and colour. And it's so easy to erase "mistakes" – with the flick of a duster or the application of cotton-buds or a putty rubber.

Right : From St Edmund's Steps





The Burys: Winter Sunshine

Finally, of course, there's the allure of the many vibrant colours - so different from that silly phrase "pastel shades": their jewel-like appearance never fails to appeal. Perhaps I just never got over my first box of chalks!"

Nancy Wilks

At the same time, in the adjoining Arts and Crafts Gallery, there will be a small display called I Create Art. This is a local after school art club for children aged 7 - 11; the club's aim is to inspire children to start on a lifelong journey of creating art.

Godalming Museum is located at 109a High Street, by the Pepperpot. Open Tuesday to Saturday 10 am to 4pm in winter, and 10am to 5pm in summer. Admission is free but donations are welcomed. The Local Studies library is open in the afternoon from 1pm to 4pm. Tea, coffee and cold drinks are available throughout the day. Children are always welcome. There is a delightful Jekyll style garden at the rear of the museum and an excellent gift shop.

For further information please contact the Museum on **01483 426510** or visit **www.godalmingmuseum.org.uk**



St Hilary's

Preparatory School
Godalming

Also welcoming boys in
Year 3 from Sept 2019 in
a phased plan to be fully
co-educational by Sept
2022



"A thriving, buzzy place with a warm and happy atmosphere and very impressive academic achievements for a non-selective school" The Good Schools Guide



Tel: 01483 416551 • @StHilarysSchool
Email: registrar@sthilarysschool.com • www.sthilarysschool.com



Busbridge resident, Claire Lewis, will be one of 24 individuals taking on the challenge of abseiling down Guildford Cathedral on Saturday 15th June, to raise money for The Fountain Centre. The centre, based at St Luke's cancer unit at the Royal

Surrey County Hospital, Guildford, offers care and support for those affected by cancer in the local area.

Claire writes, "What better way to celebrate my 10 years post diagnosis than to embark on a challenging fundraiser in aid of the amazing Fountain Centre. This is promising to be an extremely fun event (perhaps for spectators more than abseilers!) so please feel free to rock up if you fancy cheering everyone on; the event runs from 9.30 – 12.30pm. "

For more info see: www.fountaincentre.org

To donate see: www.justgiving.com, search 'Guildford Cathedral Abseil' & scroll down.

Tuesley Farm is planning another Open Day this year on 9th June.

Please check out the Open Farms website nearer the event for details and timings.



Perfectionism

Saturday 11th May

9.45am–3.30pm

Godalming Baptist Church

led by Chris Ledger, counsellor, author and speaker

Join us for our Life Issue session on Perfectionism, looking at the physical and emotional impact this characteristic brings.

To book a place e-mail pollard3@hotmail.co.uk
Tel 01483-422105 Mon, Weds or Friday mornings.

Cost £12 per person. Please bring a packed lunch, refreshments will be served throughout the day.

YOUR LOCAL HOLLOWAY HILL PAVILION



The facility is available to hire. Please contact Alison Dawson on 01483 425303 or email hhsabookings@gmail.com

OPENING TIMES

**Saturdays & Sundays
Noon - 10.30pm**

Tuesdays 6.30pm - 10pm

Wednesdays 6.30pm - 10pm

Fridays pm - 10pm



We have various draught and bottled beers and lagers. Wines include a selection of red, white and rose including Prosecco. Extensive range of spirits, soft drinks and snacks. All are welcome to come & support teams or drop in just for a refreshing drink.

TUSCAN VILLA

Available for holiday lets

*Between San Gimignano
and Volterra*

Recently restored Separate Barn
Sleeps 3/4

Beautiful large secluded villa
In gardens of one hectare
Sleeps 8/10

4 large double bedrooms

2 large sitting rooms

Study, dining room, utility
kitchen/diner

4 bath/shower rooms

15 x 6m infinity pool

Tennis court

www.ilcolto.co.uk

Tel: 01483 808105 or
theresalove440@yahoo.co.uk

Pilates in Milford

Mondays: 12:45-1:45pm and 2:00-3:00pm
Location: BURTON PAVILION



- Pilates to strengthen the core stability muscles
- Improves posture, balance & co-ordination
- Relieves tension and stress
- Tones muscles and prevents injury
- Complements other exercise & relaxes
- Pre- & postnatal conditioning

A great way to get in shape. Easy to learn.

To register call 07767 811074
Or email hels@swotty.co.uk

Helen Roberts, Chartered Physiotherapist
MCSPT, DipAPhysSport HPC, APPI

Helping Hands
Care and Nursing at Home

Est. 1989



Do you need a helping hand?

With nearly 30 years of experience in caring for people within their own home, and a commitment to using only directly employed carers, we have the expertise to provide the best care possible from 30 minutes to full-time live-in care.

Award-Winning Team

Fully Managed Service

Family Owned and Run

Dementia Specialists

56 Branches Nationwide

Looking for care?
01483 667 196

For more information
www.helpinghands.co.uk

WHAT'S ON

BLOKES' bIKING

Monthly bike ride for all abilities followed by a well earned drink at a Godalming pub!

Meet in the Homebase carpark @ 7.30pm

Next dates:

15th May

12th June

10th July

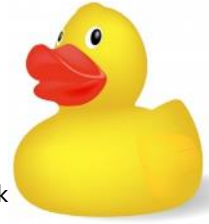


Email blokes@bhcgodalming.org

The Great Godalming Duck Race

**Saturday
11th May
11am—4pm**

Phillips Memorial Park
The Bury's GU7 1EP



BUSBRIDGE EVENING WOMEN'S INSTITUTE

PLANT AND CAKE

GARDEN SALE

SATURDAY 18th MAY

10A.M. TILL NOON

at 30 QUARTERMILE ROAD

Admission £1 to include refreshments
In aid of Skillway & Busbridge Evening WI



Calling all walkers and runners!
It's time to challenge yourself to a three mile run/walk (1km for children) to help raise money for Hydon Hill Cheshire Home. Our after run party is the perfect way to relax—come along to Hydon Hill on Clock Barn Lane afterwards for food, drink and live music from The Winklepickers.

The 10th Annual Hydon Hobble

Friday 7 June 7pm Start

To register visit: leonardcheshire.org/events

Start and finish: Hydon's Ball car park GU8 4BB

Any queries please contact Chris Arthey Email: chris.athery@hotmail.co.uk

Adults £15 (£20 on the day)

Children £5

Family £25 (£30 on the day)



BUSBRIDGE EVENING WOMEN'S INSTITUTE

Meet on the 2nd Tuesday of each month at
Busbridge Village Hall, GU7 1XA at 8pm

Visitors warmly welcome

Contact: Gill Loveluck 01252 266822

Tuesday 14th May

Resolutions

Flower Cup

Michelle Ernault - Bath bombs

A demonstration and workshop with the
opportunity to purchase kits to make bath
bombs at home

Saturday 18th May

Garden Sale at 30 Quatermile Road
10am—12pm

Tuesday 11th June

Our Birthday meeting

A representative of 'Skillway' will come to talk
to us, and it will be a social evening with a
quiz and our usual birthday cake & wine

Tuesday 9th July

Craft Cup

David Standing - Cottage Gardening

David was Head Gardener at Gilbert White's
House in Selborne for 28 years and will
illustrate his talk with slides



Invite local residents to their
Open Evening

Wednesday 3rd July

4.30-8.30pm

Arts Festival

Tuesday 2nd July

Please check timings at
www.godalming.ac.uk

Music in the Park

SUNDAY 12TH MAY

3-5PM

*The Bandstand, Philips
Memorial Park, Godalming*

*Enjoy the talent of Godalming
College's musicians at the
opening of the summer season*

National Croquet Day SUNDAY 12TH MAY



Guildford & Godalming Croquet Club invite you to come and try out this
enjoyable and fascinating sport, which can be played at a social or competitive
level, by young and old. Accompanied children aged 10+ welcome.

The club welcomes visitors at any time between 2 - 5 pm. It's free, we will
supply the equipment, and all you need to do is turn up wearing flat-soled
shoes (e.g. trainers). A warm welcome guaranteed.

Broadwater Sports Club Ltd, Guildford Road, Godalming, GU7 3DH

For details of how to find us, see our website:
www.guildfordandgodalmingcroquetclub.co.uk

Our May meeting '**PAT CHAT!**' will be held on the second Thursday, 9th May, in **Busbridge Church Centre**. Patricia Bland, Area Volunteer Co-ordinator for the charity, Pets As Therapy, will tell us how PAT

Dogs and PAT Cats can enhance people's health and wellbeing during visits to hospitals, hospices, care homes, special needs schools, etc. As well as bringing along her own PAT Dog, Fleurie, Pat will be accompanied by Pets as Therapy volunteer, Heather, who regularly visits Hydon Hill Cheshire Home, along with her PAT Dog, Millie. Come and meet these lovable, special PAT Dogs!

For our meeting on **Thursday 6th June**, we will transfer to the **Old Rectory** for a talk by David Lucas, Chair of the charity 'Mechanics for Africa'. MfA is a Technical College, which trains underprivileged young Zambians in a wide range of skills for life. They also operate a highly respected commercial workshop repairing vehicles, the profits from which are used to help run the college. Do come along and learn more about this Zambian venture and how it is supported by the UK charity.



These meetings start at **8.00pm**, with drinks and nibbles before the talks start. We very much look forward to seeing you. All are very welcome!

Dates for your diaries: **4th July**, we're looking forward to another popular garden visit, followed by a meal together; and, on **1st August**, we've organised an early evening tour of the Hogs Back Brewery – tickets £15 to include a Hogs Back souvenir glass to take home! Please keep these dates free - more details to follow!

Membership remains at £18 for the year, with a fee of £5.00 per evening for non-members. Cheques made payable to Nexus, please. Thank you. These subscriptions and fees cover gifts for speakers, welcome drinks and nibbles plus tea or coffee afterwards, as well as donations to charities. Our charity for 2019 is: Hydon Hill Cheshire Home

For more information, please phone Janet Harvey on 423264 or Kate Kaye on 415296 or find us on www.bhcgodalming.org/groups



Evensong Service

Hambledon Church
with the Chapel Choir of
King Edward's School Witley

Wednesday 19th June
4.45pm

As an interesting aside, between 1942 and 1949, the King Edward buildings in Witley were requisitioned by the government for the war effort. During this time the school temporarily relocated to Hambledon.



Donline offers professional computer engineering services to:
Small Business, Home Office, & Home Users.

Whether you have one computer or fifty, Donline can assist with all of your IT requirements: Supply & installation of hardware and software, upgrades, networking, printing, repairs including system and data recovery, anti-malware, firewalls, technical support and training.



Call: Don Tocher, on 07870-643486 or 02392-177506



Or contact Donline, online:
 Web: www.donline.co.uk
 Email: don@donline.co.uk



ALLFORD

PROPERTY MAINTENANCE

I specialise in the design, fabrication and installation of bespoke fitted and free standing furniture. I am also able to offer high quality property maintenance work including carpentry and joinery, and interior decorating. For more information including photos and testimonials see my website www.allford.co.uk

Whatever the job - from fitting a kitchen to hanging a picture - I aim to work to the highest standards to ensure that all my customers are completely satisfied.

For a free estimate or advice, contact Steve Allford on **07723717897**, or email info@allford.co.uk

Striving for excellence



Busbridge Design & Build

www.busbridgedesignbuild.co.uk
 07968 022526

Your local firm, specialising in high quality new-builds, extensions, refurbishment and all other aspects of building works

Offering exceptional levels of service & attention to detail at competitive prices

Excellent local references and referrals

Contact us today for a quotation or to discuss your requirements

R. & R. Roofing

Guildford
 Roofing Contractor & General Builder



- NEW ROOFS & REPAIRS
- CHIMNEY POINTING & REBUILD
- SLATING • TILING
- HIGH PERFORMANCE TORCH-ON FELTS
- FLAT ROOFS • LEAD WORK
- GUTTERING • uPVC FASCIAS & SOFFITS
- EXTERIOR MAINTENANCE

FREE ESTIMATES EMERGENCY SERVICE

01932 344660
07956 554604

7 Rivermead Byfleet KT14 7BZ

Email: russ@rr-roofing.co.uk



WHAT'S ON

Saturday 25th May Movie Matinee

2.30pm Busbridge Church or the Old Rectory (adjacent to Busbridge Church). Please check venue nearer the

time). Tea, coffee & biscuits provided. No charge for this event. Come and enjoy some classic Laurel & Hardy. Booking not required.

Thursday 27th June Annual Prior's Field Garden Party

3.30—5pm Prior's Field School, Godalming

Please book as below.

All warmly welcome. We are happy to arrange lifts to any of our events.

For more details or to book please contact **01483 421267** or email

primetime@bhcgodalming.org



Coffee, Cake and Hearing Aid Repair!?!

Do you have an NHS hearing aid? Would you find it convenient to have the routine maintenance of your hearing aid undertaken in your local area? If so, then The Old Rectory, Busbridge, 2-4pm, the afternoon of the **2nd Friday** of every month is the place to be!

Friday 10th May, Friday 14th June, Friday 12th July

So whether your hearing aid is in need of re-tubing or you require new batteries, come along to one of the new drop-in sessions. No appointment is necessary, just come along with your hearing aid(s) and your beige record book.



Message in a BOTTLE

Lions Clubs International have pioneered an initiative called 'Message in a Bottle' or MIAB for short. It is a simple idea designed to encourage people to keep their personal and medical details on a standard form and in a common location – the fridge. A white plastic bottle containing the form could save your life due to the speed with which the Emergency Services could respond to your individual needs. The Emergency Services would know you have a bottle by two labels displayed on the inside of your front door and on the door of your fridge.

The scheme is free to the user. Whilst it is focused on the more vulnerable people in our community, anyone can fall downstairs, so this scheme can benefit anyone – including you! As a minimum it will save the Emergency Services valuable time identifying you and your emergency contacts. By telling whether you have special medication or allergies or not, it is a potential **lifesaver** and provides peace of mind to users and their friends and families.

Godalming Lions Club has given a box of these helpful bottles to Busbridge & Hambledon Church so that they are easily accessible to our local community. If you would like to have a bottle yourself or to have one to pass on to a friend or relative please contact Penny Naylor at the Church Office on 01483 421267 or email: penny.naylor@bhcgodalming.org

Fed up with Ironing? Let the **Ironing Fairy** do it for you!



You are not alone!

Ironing is the most dreaded household chore. We regularly heard people wishing for a "ironing fairy" to take it off their hands, which is why we started our business.

Why choose us?

- ✓ Free collection & delivery
- ✓ Turnaround in 48 hours
- ✓ Professional service

We can work around you

Whether you require a regular weekly or 'on demand' ironing service.

☎ 01483 428044 📞 07809 401794

www.ironingfairy.net



Computer Repairs



- ✓ Desktop & Laptop Repairs
- ✓ Wireless & Wired Networking
- ✓ PC Upgrades & Tune Ups
- ✓ Virus & Spyware Removal
- ✓ Data Backup & Recovery
- ✓ Server Support



ONSITE REPAIR OR COLLECTION
PROFESSIONAL AND RELIABLE SERVICE
RESIDENTIAL & BUSINESS CUSTOMERS ARE WELCOME



WE ALSO BUY OR REPAIR YOUR

BROKEN IPADS &
MACBOOK LAPTOPS



REASONABLE PRICES AND FAST TURNAROUND

📞 07809 401721 📞 01483 419468

🌐 www.TechGuy.biz 📧 michael@TechGuy.biz



IET The Institution of
Engineering and Technology

MJ **NOYES**

ELECTRICAL CONTRACTORS
For domestic & commercial electrical
installation work
Martin Noyes
2B Charterhouse Road
Godalming
Surrey GU7 2AG
1:01483 427340 M: 07836 234282
E: info@mjnoyes.co.uk
www.mjnoyes.co.uk

C.I.C.



**COUNSELLING IN
CONFIDENCE**

A PROBLEM SHARED IS A PROBLEM HALVED

Do you need someone to talk to?

I am a member of the British Association for Counselling and Psychotherapy (BACP) and have graduated in a BACP accredited Advanced Diploma in Relational Integrative Counselling. I have considerable experience in bereavement issues and also work in general practice where I have expertise in:

Relationship problems

Stress, anxiety & phobias

Childhood issues, low self esteem, post traumatic stress, abuse, depression, loneliness

Lack of motivation or direction

Life stage problems: teenage, adult, middle age, old age and after 80

I offer very reasonable rates and can see you short or long term in lovely offices in Guildford or Godalming

No problem is too big or too small. The hardest thing is to make the call.

Tel. **Elaine Banville MBACP Cert. Ed.**

01483 421038

07977 079011



Member of the British Association for
Counselling & Psychotherapy

Spring @ busbridgechurch



Sundays at Busbridge... ...take your pick! Something for everyone

8.00am Quiet Service * See note below
A quiet said service with Holy Communion

10.00am Classic (held in the Church) * See note below
A structured service following Common Worship, including well-known hymns, and space for listening and reflecting. Holy Communion is on the 2nd and 4th Sundays

10.00am Contemporary (held in Busbridge Junior School Hall)
An informal service of contemporary worship led by a worship group and making creative use of modern media. All age service on the 1st Sunday and Holy Communion on the 3rd Sunday

6.30pm Evening Service * See note below
An informal worship service with a vibrant contemporary style. Holy Communion on the 1st Sunday and an 'Unplugged' service on the 3rd Sunday



And for the children?

Did you know we have, on average, 100 children come along most weeks??

A full and vibrant programme of fun activities for 0-13 years in both the Classic & Contemporary Services

*Venue may be subject to change. Please monitor www.bhcgodalming.org.uk or Tel 01483 421267



Printed by Linnerlake 01483 452087
www.linnerlake.co.uk
linnerlake@gmail.com

J. Morris

Established for over 50 years.

LOGS THAT BURN. KINDLING THAT LIGHTS.

Hardwood logs for
open fires and log burners.
Collection & delivery 7 days a week.

COMPOSTS MULCHES GARDEN SUPPLIES

Load sizes from 1m3 to 7.5t.

Delivery 7 days a week.

www.logsthatburn.co.uk

07587 343 572 / 01483 423193

logsthatburn@gmail.com

Compton Nursery, The Street,
Compton, Guildford, Surrey GU3 1EJ

Honey Landscapes

Garden Maintenance and Construction



Patios & Drives • Hedges
Stonework & Brickwork
Fencing • Planting
Lawns large or small
Tree works • Turfing & Seeding

Tel: 07952915547

honeylandscapes@gmail.com

www.rhw.co.uk

rhw

solicitors

Family Law Specialists

call: 01483 302000

email: guildford@rhw.co.uk



Wills &
Inheritance
Quality



Family
Law



Conveyancing
Quality

Other legal services: Wills & Probate,
Conveyancing, Employment Law,
Commercial Property & Corporate

A J Benneith & Co

CHARTERED ACCOUNTANTS

We are an independent practice
that has been offering a personal
service for over 30 years

Contact us for all your
accounting needs, tax needs
and a free initial consultation

**Registered Auditors
Personal Tax Returns
Companies & Charities**

Tel: 01483 539 777

www.bennewith.co.uk



SMALL ADS

VERY LOCAL TOP QUALITY TWO YEAR OLD HARDWOOD LOGS FOR SALE. Felled & processed just a mile from the centre of Busbridge. Pick-up load (1.2cm) £90, Dumpy-bag (0.8cm) £70 delivered to your drive. Introduce a new customer for £5 off your next order. 35 Park Road, Busbridge, Godalming GU7 1SQ. andrew4logs@hotmail.co.uk or call Andrew on: **01483 424934 or 07952 429071**

GARDENER TRAINED WITH THE RHS, HARD WORKING AND RELIABLE. Will undertake weeding, pruning, mulching and bed work plus more from £20 per hour & a medium hedge cutting service priced per job. Contact Matthew on **01483 421547**

VILLAGE HOUSE FOR RENT IN SW FRANCE in the centre of the picturesque village of Lauzun, Lot et Garonne. 35 mins drive from Bergerac airport. 3 double bedrooms, 1 twin bedroom (off main bedroom), 2 bathrooms, fitted kitchen, large garage/games area, secluded patio. Available mid August 2019 onwards. £500 per week. Tel: **01483 415093**

SURREY HOUNDS.... BESPOKE DOG EXERCISE & CARE SERVICE. Puppies to older dogs – all breeds welcome, use of private secure & controlled 3-acre field, dogs assessed & client's requirements fully discussed, fun & safe care programme with positive reward based training. Fully insured, police checked & first aid trained. Contact us on **0771 2047295 / 0771 3841922** or surreyhounds@gmail.com or www.facebook.com/Surreyhounds

DELIGHTFUL CORNISH ESTATE MANAGER'S COTTAGE for holiday lets set in middle of 80 acres of The Lost Gardens of Heligan. Three beds, three receptions, garden, sun terrace, parking. Enquiries contact lesslands@gmail.com

RELAX & HEAL REFLEXOLOGY

samsegar@btinternet.com
www.surreyreflexology.webs.com

*An effective & deeply relaxing,
non-invasive treatment which
can support the body's
natural healing processes.
Treatments in your own home.*



07773 807816

MEMBER OF THE ARK INSTITUTE

Karen Regan
Foot Health Professional

KAREN REGAN DIPFHP MCFHP MAFHP
MOBILE FOOT HEALTH PROFESSIONAL
WWW.HEARTANDSOLE.SITE
07776309567

*Professional, confidential &
sympathetic counselling*

Gill Brennan

MBACP (Accred), FdA (Hons), BA (Hons)
07947 424 538
gillhbrennan@gmail.com

www.godalmingcounsellor.com



Paul Clifford
Property Services
Qualified "Part P" Electrician
B-Tec Trained Plumber

Plumbing Electrical
Kitchens Bathrooms

Any job from a refit to a washer or fuse
Fully Insured References Available

Paulclifford60@gmail.com 07889 073853

We ask you to please make sure that those people who are the focus in photos have given their consent to be included in our publication & on our website; in the case of minors we ask that this is parental consent. "The Bridge" would like to thank advertisers for their support, but to make clear to readers that it does not offer any endorsement of the goods or services advertised. Views expressed in the articles are not necessarily those of the Editor or Busbridge Church. The Editorial Team reserve the right to edit any articles submitted for consideration for publication.

Advertising

SMALL ADS are designed for those who want to advertise local services. **£5 per** insert. For sale ads for items **£2** (up to 20 words). Please contact: **Jacky Beale** on **01483 423768** or via email **jackybeale@hotmail.com**.

DISPLAY ADVERTISING for businesses who wish to advertise in full, half, quarter or eighth page format. We deliver free of charge to over 1850 local homes. Please contact us at:

editor.atthebridge@gmail.com

We reserve the right to decline advertising or payment for advertising at our discretion.

COPY DATE

JULY/AUGUST 2019 EDITION

WED 12TH JUNE

PUBLICATION DATE: FRIDAY 28TH JUNE

EDITORIAL TEAM

Cathy Brook (Editor)	420633
Jacky Beale (Small Ads)	423768
Christine Payne	417320
Chris Sollars	Lorna Sherwin
Lesley Reeves (Treasurer) via email at:	bridgefunds@btinternet.com

Write to us: c/o Church Office, The Old Rectory, Old Rectory Gardens, Godalming GU7 1XB. St John the Baptist Church
Rector: Rev Simon Taylor
01483 421267

QUARRY HILL STORES

17 Quarry Hill



Paper Boys and Girls Required in Busbridge

Newspaper Delivery Service in Busbridge
Contact: Mr S. Patel

Tel: 01483 416938

PC Doctor Godalming

Fixing computers of all shapes and sizes

If your computer is run down, unreliable and generally out of sorts then why not call for professional help and advice in your own home. All types of computer or network problems dealt with on a "No Fix No Fee" basis.



79 Pullman Lane, Godalming, GU7 1YB
Tel: 01483 424378 | 07876476990
email to: mike.lagan@pcdocgo.co.uk



S Bennett & Son Gardening Services

*Local reliable service for all
your gardening needs*

Tel - Stuart: 07759 361 000

sbennettandsongs@virginmedia.com

Ashby Private Hire & Taxi Service

Long or Short Distances

◆ Airports ◆ Hospitals ◆ School Runs

Surrey County Council Approved Operator

01483 860700

Mobile 0780 2432648

4 Windy Wood
Bargate Wood
Godalming GU7 1XX

aphcars@hotmail.co.uk



calico

Open 7 days

13, High Street, Godalming
Curtains - Blinds - Fitting Service



01483 421990
calico-curtains@hotmail.com

