

The Bridge

MAY & JUNE 2021



www.bhcgodalming.org/thebridge

PRIOR'S FIELD

GODALMING SURREY



GSA Girls' Boarding and Day School 11-18

*Achievement in all its forms
is alive and kicking in every
part of their school day.*

- Tatler Schools Guide 2021



PRIOR'S FIELD - THE PLACE TO ACHIEVE!

Please contact our Admissions department for more information
or to book your place at our next Open Event

admissions@priorsfieldschool.com

01483 810551 www.priorsfieldschool.com

#believe #achieve #succeed

Registered Charity No. 312038



CONTENTS

PAGES 10 & 11 *Blossoming Busbridge*
Celebrating the beauty and bounty of local blossom.

PAGE 13 *Red Kites*
A look at a local bird of prey, the Red Kite.

PAGES 14 & 15
A Weekend at High Barn
Recollections of the local Girls' Training Corp and the Busbridge Home Guard during the Second World War.

PAGE 17 *Anyone for Cricket?*
What's on offer this summer at Holloway Hill.

PAGES 20 & 21
Brookwood Cemetery
The second and concluding article about this local landmark.

FRONT COVER : Local elderflower by kind courtesy of Chris Payne

Appliance Service and Sales

- Repair of most main makes
- Built-in and Freestanding
- New appliances with installation
- * Built in and American F/F

Checkatrade.com
Where reputation matters

**Cooker/Oven
Dishwasher
Washing Machine
Tumble Dryer
Fridge/Freezer ***

Elstead (01252) 705198

www.applianceexpert.co.uk

St Hilary's 'Climbs' MT KILIMANJARO

St Hilary's Prep School in Godalming took to their stairs and steps on Friday 12th February to collectively climb the equivalent height of Mount Kilimanjaro, raising money and awareness for the Motor Neurone Disease Association (MND).



Paul Jameson, a friend of the school community, whose three children attended the school and one of whom now works at the school, provided inspiration for the challenge. Paul has been living with MND since 2017 and has dedicated his time to fund raising for the MND Association. One of his earliest fundraising missions was to climb Mount Kilimanjaro and play a tennis match at the summit, for which

he achieved a World Record for the highest altitude tennis match! Paul has raised over £150,000 for the MND Association and has been awarded a British Empire Medal for his fundraising work.

The pupils, staff and families of St Hilary's faced the challenge with enthusiasm and excitement and it was an excellent way of bringing the School community together when they have actually been quite dispersed as a result of the Lockdown. Donning their boots, coats and rucksacks, boys, girls & staff climbed their stairs and steps with gusto with many adding ropes, flags & goggles for the full effect!

The target was to climb a combined total of 31,026 stairs, however the community 'pulled it out of the bag' and recorded a total of 274,526 stairs - meaning that they actually climbed the equivalent height of Mount Kilimanjaro nearly nine times!



To date, they have raised over £14,000 including Gift Aid.
<https://www.mndschooolschallenge.org>

St Edmund's School NEWS

A wonderful igloo has been taking shape in Year 2. It has been a long awaited project, with milk bottles accumulating for weeks. As you can see, the children have really enjoyed making it and it's even big enough to fit six children inside!

We also held a belated World Book Day on Friday 26th March. It was lovely to see the children coming into school in their amazing book character costumes! There were some wonderful costumes, with such creative ideas. There was great excitement when we managed to get the whole school out in the playground, well spaced out in their class groups, to watch each class parade around the playground. It is these things that the children have really missed out on over the last year. It is more than a year since we had the whole school together. They have really enjoyed seeing each other's costumes and of course, celebrating their love of reading!

Elizabeth Higgins, Headteacher



As part of our journey through Lent, Year 6 children were fortunate to have a special Lent workshop on 18th March. They followed the Way of the Cross and thought deeply about the last journey Jesus made.



Remembering HRH Prince Philip

Local churches remembered and paid tribute to HRH Prince Philip who died on 9th April at the age of 99.

The bells at Busbridge and Hambledon Church were tolled 99 times at 6pm on that evening, once for every year of his life. Tributes and prayers were also said for HRH Prince Philip, the Queen and the royal family at the Sunday services.



Busbridge Parish Register

FUNERALS

4th March 2021

Angela Rosemary Murray Martin

17th March 2021

Oswin Almond
(at Guildford Crematorium)

25th March 2021

Barbara Mary Hubble
(at Clandon Wood Natural Burial Ground)



The first BLUEBELL of the year?

This early flowering English bluebell was spotted on the footpath to Combe Lane, Thorncombe Street on 29th March.

A Blast FROM OUR Parish Past MAY 1917

NOTES AND NOTICES.

The origin of the name of CROWNPITS, that part of our parish which lies near the three-cornered green in the Brighton Road, is somewhat obscure. The "Pits" were clearly quarries or stonepits, but whence "Crown"? It may be that the stone, an outcrop of which may be seen in the steep hill leading up to Green Lane, was in earlier times worked by or for the benefit of the Crown, for the Manor of Godalming was held by the Crown from the reign of Henry VIII until that of Elizabeth when it was sold (certain rights being reserved) to Sir George More of Loseley, near Guildford. The sign of the Three Crowns Inn does not appear to be connected with the origin of the name of the hamlet, which in the early years of the 19th century consisted of not more than a dozen houses. In those days, before the time of Macadam, the steep little hill was a very sandy lane and the stone which was so near was not used for the construction of a firm road such as exists now.

The opening of the Surgical Department of the Busbridge Red Cross Depôt at the Institute at 10.30 on Wednesdays and Fridays has proved a great success. Some of the workers who come



Emery &
Orchard

ESTATE AGENTS

Passionate about property

SINCE 1993



EMERY & ORCHARD

Godalming's Local Independent Agent Established for over 25 years.

Property to sell in Godalming or the Villages?

Then contact Tony Emery
or Jeremy Orchard on
01483 419 300
to arrange a
Free Market
Valuation.

20 High Street
Godalming
GU7 1EB

www.emery-orchard.co.uk





St Hilary's

Preparatory School & Nursery, Godalming

Boys & Girls
Ages 2—11



Independent Prep School of the Year 2020



Bursaries & Scholarships available for Year 3 Entry

Virtual Open Mornings Taking place every Friday at 11am

www.sthilarysschool.com • Tel: 01483 416551 • Email: registrar@sthilarysschool.com



@StHilarysSchool



@sthilarysschool



St Hilarys School Trust

Fully Insured

Fully Qualified

Corrective
Surgery

Reducing

Pruning

Thinning



Felling

Dismantling

Hedge
Trimming

Stump Grinding

Julian Draper NCH Arb

Tel 01428 681978 Mob 07968 827711

forkingbranches@hotmail.com

Busbridge Infant SCHOOL

Busbridge Infant School needs more internal learning areas and is fundraising to buy a ready-made building as a multi-purpose break out space. Alumni parents will fondly remember if their child was a Wren or Robin, Finch or Swallow, Wagtail or Woodpecker and the new building, aptly named The Nest, will provide extended learning opportunities for all.

The plan includes a curriculum kitchen to bring outside learning from the school's vegetable plots and woodland area into the classroom, with practical science and nutrition-led learning for every class. Individuals with additional learning needs requiring targeted support will also stand to benefit significantly from this additional space. "With just one small intervention room, we are constantly juggling the staffroom, Bursar's office, teachers' planning room and library to accommodate the demand", says Katherine Smith, Head Teacher. "Having another space would be transformational." Added pressures from the Covid-19 pandemic mean that maintaining all the children's mental and emotional wellbeing has never been more important. "The Nest would be a calm inclusive space for everyone."

Alongside fundraising within the school community, the PTA has been actively seeking funding from local and national trusts and foundations. "We are two thirds of the way there" says Gemma Taylor, Vice Chair "but need another £12,000 to make this much-needed build happen".



If you or your business can make a donation to The Nest, please visit the PTA website - <https://busbridgeinfant.weebly.com/the-nest-project.html>. Alternatively, contact Gemma at vicechair_pta_bis@hotmail.com for further details on pledging support.





Blossoming

BUSBRIDGE

From the downright pink and blousy to the delicate and dainty, the appearance of blossom each spring lifts the spirits and is a welcome sight. Here's a look at some of our local blossoming stars.

One of the earliest to bloom is the blackthorn (*Prunus spinosa*, left, 1st March) whose delicate clouds of snowy white blossom are always a welcome antidote to the winter greys; hinting of warmer times to come. Indeed you may be more familiar with the blackthorn for their later fruiting offering — sloes, which have adorned many a gin.

An absolute star in the blossoming calendar has to be the exquisite winter flowering cherry, *Prunus x subhirtella* 'Autumnalis Rosea'. Its delicate appearance masks its robust and hardy nature, flowering throughout the harshest of winters. There's a much admired, fine specimen in Busbridge, planted just next to the Church porch (pictured right on 25th February). The current flourishing tree was planted in 1983 (a replacement for an original which was planted in 1953 to celebrate the Queen's coronation).

The majority of cherry trees planted in our local parks and gardens are in fact ornamental cherries. Generally they have a fairly short life span compared to many other trees—about 20 to 40 years. There's always exceptions to the rule but you'll have to travel to Japan and Jindai Sakura to admire the oldest cherry blossom tree in the world, an amazing 1800-2000 years old!



Kind thanks to Martyn Sandford (image top left P11) & Chris Payne for these lovely photos.



The Drive, April



Home Farm Road, early April

The Japanese celebrate the cherry blossom each year in their deeply rooted tradition of 'Hanami', flocking outdoors to admire and socialise beneath the blooms. Closer to home, for a short window in April, we can enjoy the delight of our own avenue of ornamental blooms along The Drive. I can remember as young children we would pick up abundant armfuls of fallen blossom to proudly present to our infant school teacher each morning!



Bramley Apple,
Minster Road, 8th May

Right : One of the last to bloom is the crab apple. Here, pictured flowering at Godalming College on 9th May.



Peach tree,
Hambleton Road,
21st March

Left : And not forgetting the invaluable role all blossoms play as an early source of nectar, pollen and food for our local wildlife.

From April to May, keen gardeners anxiously watch the weather as very cold overnight temperatures can be to the detriment of later fruit tree harvests. While we may be very familiar with the sight of orchards it may surprise you to know that in fact the apple tree is not a native of the UK; and from the genus Malus, the apple is actually a member of the rose family.



'Caught on Camera' being the operative word for this fleeting image.

These tulips in Minster Road were captured

early in the morning on 12th April when around 1cm of snow had fallen. It didn't linger long....

Please send us your **local wildlife photos** for our next edition when we are hoping to publish another



'**Busbridgewatch**' article celebrating local wildlife.

Contact details are on page 35.



Open Mornings

Wednesday 23rd June 2021
(on site, geared to Reception Entry 4+)
prepadmissions@stcatherines.info

Virtual Baby Cats

Let our teachers inspire your pre-school child's imagination with a selection of free interactive and creative activities online.

www.stcatherines.info/prep-home/baby-cats



St Catherine's Prep, Bramley

CSA Day & Boarding School since 1885 | 4 - 18 years
Guildford GU5 0DF | www.stcatherines.info



If you have driven along the M40 through the Chilterns, you have surely seen the red kites that now occur in large numbers, wheeling over the motorway. These magnificent birds are becoming increasingly common across the south of England and can often be seen over the Surrey hills and occasionally over Busbridge.

Red KITES

The red kite is one of Britain's largest birds of prey, with a wing span of nearly two metres, significantly larger than a buzzard. It is reddish-brown with black wingtips and a deeply forked tail and is an especially beautiful sight when lit from below by the setting sun. Red kites seem to fly effortlessly, mostly gliding with wings outstretched and forked tail constantly twisting to navigate the air currents. They have a distinctive mewling call, not unlike a buzzard's.

Despite their size, they feed mainly on carrion and worms, occasionally taking small mammals. Their weak legs mean that they are unlikely to take live prey of any size.

Red kites were once common scavengers over mediaeval cities, helping to clear the waste that littered the streets. Shakespeare refers to London as a "city of kites and crows" and also mentions their tendency to steal things to decorate their nests ("When the kite builds, look to your lesser linen"). Tudor vermin laws, however, placed a bounty on animals that were seen as agricultural pests, a penny being payable for the head of a kite. As a result of this and later egg collection, kites were brought to near extinction in Britain.

Today, red kites are a real conservation success story and there are now estimated to be more than 4000 breeding pairs, thanks to a reintroduction programme over the last 30 years at sites including the Chilterns.

If you see a large bird gliding gracefully over your garden, look for that forked tail constantly twisting as it balances on the air currents and admire this most magnificent of birds.

Richard Morris



A Wartime Weekend at High Barn

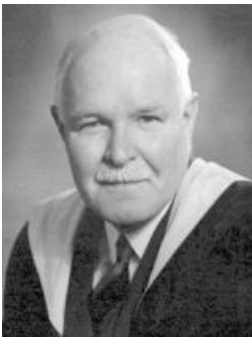
**by
Josephine
Collett**

Jo was a pupil at the former Godalming County Grammar School from 1938 - 43. In 1975 the School became Godalming College, our local Sixth Form College.

As World War 2 progressed, senior girls of Godalming County Grammar School were enlisted into the local Girls' Training Corps. Our activities included drilling, marching in parades with the Town Band, and learning the Morse Code.



In the Autumn of 1943, several of us were chosen to take part in manoeuvres at High Barn, the residence of Colonel Pleydell Bouverie, just south of Godalming on the Hascombe Road. Our beds were in the stables, and two ladies, relatives of the Colonel, took care of our needs.



The plan was to defend High Barn against The Busbridge Home Guard captained by Mr Wigfield, our highly respected headmaster (pictured left, by kind permission OGA). Our contingent comprised two local farmers,

nicknamed Cottie and Wootie, who had dummy rifles fitted with crackers, and ourselves with our somewhat sketchy Morse Code skills.



After much hilarity, we settled down for the night, only to be woken shortly after by the sound of crackers going off - a sign of impending invasion! We waited, and when nothing happened, we drifted off to sleep again. Morning came and our hearts sank as our outside view was obscured by pouring rain streaking across the window panes!



Crackers in the night?

One of our defenders had dropped his rifle, stood on the string and off they went! Unfortunately that was the end of the excitement as the inclement English weather cut short our planned manoeuvres!



Left to our own devices, we played around with the Morse Equipment and when the weather improved, wandered around in the beautiful grounds. There had been a bumper harvest of sweet chestnuts and our fingers bled as we tried to extricate the nuts from their prickly outer skins. Then, thanking and bidding farewell to our hosts, we jumped on our bikes and pedalled home, imagining the fun we would have recounting to our classmates our adventurous weekend at High Barn.



OPEN EVENTS 2021
Tuesday 27th April (Virtual)
Friday 25th June
admissions@stcatherines.info



St Catherine's, Bramley

GSA Day & Boarding School since 1885 | 4 - 18 years
Guildford GU5 0DF | www.stcatherines.info
admissions@stcatherines.info

Cranleigh Tiles & Bathrooms

246 High Street, Cranleigh, GU6 8RL



Whatever the budget, from non-branded basics and essentials to more sophisticated designer products, our family-run bathroom showroom led by Craig Cooper is here to help.

We offer free, no obligation estimates and advice on everything bathroom related.

Bathroom Essentials • Showers • Toilets & Washbasins • Baths
Wet Rooms • Lighting • Tiles & Flooring
Design & Installation Available

Open Monday to Friday
10am to 4pm for appointments

All enquiries warmly welcomed but in order to promote safe shopping please can we ask you to book an appointment prior to your visit.

Telephone 01483 272727 or 07539 145513
craig@cranleighbathroomstudios.co.uk
www.cranleighbathroomstudios.co.uk

Godalming Cricket Club

AT HOLLOWAY HILL REC

Anyone wandering around Holloway Hill Rec at certain times of the week during the summer months may well hear the thwack of leather on willow and cries of "Howzat!" This is the home of your local cricket club.

Have you ever thought about getting involved either as a player or official, or even as a volunteer to arrange social events or manage teams?



Looking ahead to our second season under Covid restrictions, we have a much better view of how things can work out after last year's shortened season. The ECB (English Cricket Board) has put together its own road map which we are following for both senior and junior players. And we are growing!

We now have **2 Senior Men's teams** who play on a Saturday; a **Ladies Team**, The Lightnings, who play on Sundays; a **development squad** designed to encourage younger players into senior match play; our new midweek **Rams team and numerous Junior squads** who train on Friday night and Saturday morning and play their matches on a Sunday. It's a busy and fun place to be.

Another addition to the Godalming CC set is the **new Dynamos Cricket** which is for **girls aged 8-15 years** who would like to start their cricket career with a softball. However, all girls are welcome to join the junior hardball teams if they have some experience of cricket.

Friday night is the place to be for the whole family with **Ladies softball** also taking place. Once restrictions allow, we plan to have the clubhouse open with a new range of drinks in the fridge.

For those who don't see themselves as players of any age, we welcome anyone who might be interested in scoring or umpiring (training can be provided), managing databases and supporting coaches and managers.

We are a very friendly club and would love to meet new members. If you'd like more information on what goes on or how to get involved, you can find everything you need to know on the website: www.godalmingcc.co.uk. Registration & weekly sign up forms can be found there - at the moment this is essential due to restricted numbers. We regret we cannot include anyone who just turns up on the night.

We look forward to meeting you all!

~~Retired~~ *Inspired*

~~Lonely~~ *Community*

~~Restricted~~ *Freedom*

~~Downsize~~ *Rightsize*

~~Facetime~~ *Family time*

~~Ordinary~~ *Extraordinary*

~~One day~~ *Today*



Ready for your *best* years?

When you're ready to *rethink retirement* and embrace the best years of your life...

...our retirement village is *ready for you.*

**BRAMSHOTT
— PLACE —**

Inspired in Hampshire

Visit safely today!
Call 01428 788 250 or
visit bramshottplace.co.uk

SUNDAYS AT BUSBRIDGE CHURCH



SERVICES UPDATE! Services started back in both Busbridge and Hambledon churches at Easter, and continue to be broadcast live on YouTube. Those attending services are requested to sign up in advance and wear a face covering. Full coronavirus health and safety measures are in place.

9AM Classic Service

with communion on 1st Sundays of the month (2 May and 6 June)

10.30AM Contemporary Service “Conversations from the Couch”

Informal, topical, interview style. Conversations offers contemporary worship with band led music in a TV studio atmosphere.

6PM Unplugged—23 May & 27 June

For all info and to sign up: www.bhcgodalming.org
or watch online:



BHC Godalming

www.youtube.com/bhcgodalmingonline



SCAN ME



BROOKWOOD Cemetery

In our last edition Ian Tomes, one of our readers who works for Woking Borough Council, began a fascinating story about Brookwood Cemetery, which is undergoing a major refurbishment programme under his direction. In his second and final article, he tells us more about its development in the 20th and 21st centuries.

Brookwood is possibly one of the most diverse cemeteries in the world. Areas were set aside for individuals, by faith (Zoroastrian, Anglican, Catholic, Muslim - and within that faith several different groups), or by occupation (South Western Railway employees, actors etc), or by nationality (e.g. Serbian, Latvian, Swedish). Brookwood mental hospital also had its own area, and there was a further area set aside for Chelsea Pensioners.

In 1917 the Government annexed 37 acres for the military, and this area now forms the largest Commonwealth War Graves Commission (CWGC) cemetery in the UK. It is unique in having two Lutyens crosses. Within the CWGC cemetery there are 468 American war dead under the care of the American Battle Monuments Commission (regarded by them as a part of the USA). This is the only military cemetery in the UK for American soldiers and sailors who lost their lives in Great Britain during the WW1.

The cemetery is a Grade 1 listed park and garden with 18 listed monuments. It has possibly one of the best avenues of Wellingtonia trees to be found anywhere in the UK,

being some 160+ years old, and many monkey puzzles of a similar age, together with other very precious flora and fauna. It is home to large variety of bats and even has its own unique moss, not found anywhere else, called "Brookwood moss".



The cemetery includes the graves of many distinguished figures from the past and has the resources to be able to inform the inquisitive about their lives and importance to society in general, and the cemetery website (<https://brookwoodcemetery.com/>) is a source of more information. Those buried there include the granddaughter of Nelson, Horatia Nelson-Johnson, and the grandparents of Freddie Mercury, whose given name was Bulsara.

In all there are 7 Acts of Parliament relating to the cemetery, and until 2015 it had always been in private ownership, although sad to say during the latter half of the twentieth century it suffered from neglect, vandalism and asset stripping. I joined Woking Borough Council a week after the cemetery was acquired and I have had the privilege of driving that restoration programme.

Today it is in the care of Woking Borough Council, who recognised it for its important historical and environmental place in the Borough, since which time the cemetery has been greatly aided by some £1.5m funding per annum for restoration.

Much has been achieved in catching up with landscape and tree maintenance, resurfacing roads and rebuilding some 500m (out of a total of 3.5km) of boundary wall. Two important monuments have been restored and new burial areas created. Gradually it is returning to its former glory, and we were delighted to host (despite Covid) a recent visit by HRH the Duke of Wessex.

If you haven't been, please do go and visit when restrictions permit, but allow half a day (it's big) and I'm sure like me you'll be amazed at this place which is just on our doorstep....this quiet spot of rest in God's Acre.





Sunrise: A Great Place to Call Home

Living in a residential care community like Sunrise, it's literally home-from-home. Every resident is encouraged to bring in their own furniture, and their pets. High quality care and support is provided in an environment where residents can make new friends and enjoy a variety of events.

Our programme of activities each day offers a full social life, from musical entertainment to a pub quiz, tea dance to art and crafts, games to flower arranging.

Join in as much or as little as you like – our desire is that residents live a happy life that suits them.

Call us on
01483 604099
to book a tour.

Sunrise of Guildford
Astolat Way, Peasmarsh,
Guildford, Surrey GU3 1NE

SunriseGuildford.co.uk



SUNRISE
SENIOR LIVING
GUILDFORD

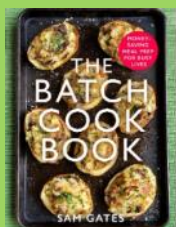


Homemade *Pizza*

Always a family favourite, try making your own pizzas at home (and you don't need a pizza oven either). This makes enough for four pizzas.

INGREDIENTS

7g sachet easy fast dried yeast
1.5 tsp. caster sugar
1.5 tsp. salt
320ml tepid water
600g strong bread flour, plus
extra for dusting.
Olive oil for greasing
Jar of sun-dried tomato paste
3-4 balls of Mozzarella
Sliced ham and salami
Olives
Salt and pepper
Handful of fresh basil



Sam's new book *The Batch Cookbook* was published on 15th October.

1 To make the dough, mix the yeast, sugar and salt together and tip into a measuring jug filled with the lukewarm water. Stir well & leave to dissolve.

2 Place the flour into a large mixing bowl and make a dip in the centre. Pour the yeast mixture into the dip and gradually mix it into the flour until it becomes a shaggy dough. Turn the dough out onto a floured surface and knead for ten minutes until smooth and springy.

3 Clean the mixing bowl and grease with a little olive oil. Place the dough back in and cover with greased cling film, then set it aside to rise until it has doubled in size (this will take about an hour).

4 When the dough has risen, divide it into four pieces. Liberally grease four baking tins (large round cake tins or tray bake tins are ideal). On a floured surface, roll the pieces out to fit the tins, pressing them into the corners, and leaving a small lip around the edge.

5 Heat the oven to 220°/200°C Fan/gas mark 6. Spread a quarter of the tomato paste onto each pizza, and scatter over the cheese, meat and olives. Season with salt and pepper. Bake for 10-12 minutes until the dough is lightly golden and the cheese is bubbling. Remove from the oven, scatter with torn basil leaves and serve immediately.

 [samgatesfood](https://www.instagram.com/samgatesfood)

 [@samgatesfood](https://twitter.com/samgatesfood)

 www.samgatesfood.co.uk





Climate chaos means every drop of water is precious to Rose. She is doing all she can to battle against it. Rose, and many people like her have to walk 6 miles per day carrying back 2 large plastic containers full of water. Donations to Christian Aid will help to install safe and reliable sources of clean water near communities.



During the last year many of us have been walking for our health, fitness and well being. Why not join CA sponsored 300,000 steps challenge during May? Find out more at caweek.org/steps

As more of our family, friends, and neighbours receive their COVID vaccinations, we rejoice and are glad that our loved ones are protected. We give thanks for all the NHS staff and key workers who continue to save lives across the UK.

For the poorest and most vulnerable communities across the world, there is little hope of a vaccine rollout. These people already face a lack of water, food, and healthcare. Some are homeless. Some are living with underlying health issues such as HIV. Christian Aid is already on the ground, helping keep people safe from coronavirus with

practical support – but with your gift of thanks we can do more. Your gift of thanksgiving could provide a family with the vaccine, hygiene kits and safe water.

See christianaid.org.uk/give/ways-donate



The Easter BUNNY

This April, children from Busbridge Church's The Ark (ages 3-7) and Explorer groups coloured and prepared Easter bunny boxes and cards (pictured left) to distribute to local Prime Timers!



Prime Time is open to anyone (over 50s, retired and/or semi retired) and **warmly welcomes new members**. During the pandemic the team continue offering opportunities to engage through the use of varied means; online through Zoom and YouTube, telephone contact and post.

For further details and Zoom joining instructions, please email primetime@bhcgodalming.org or leave a message for the Prime Time Team via the Church Office on: 01483 421267

What's next for Prime Time?

The Prime Time Team are currently exploring options as to how we might be able to safely gather again once Lockdown restrictions have been eased sufficiently. It is likely that we will start off offering opportunities for people to gather in small groups rather than attempting large events. So do look out for announcements arriving in the post or to your email inbox, or keep your eyes on the lookout for updates in subsequent editions of this magazine.

Until such a time as we are able to meet again, **Prime Time members are being asked to participate in a project**. As we have recently passed the one year anniversary of entering Lockdown, to mark this milestone Prime Time is producing a Year Book reflecting Prime Timers' experiences during Lockdown; a kind of scrapbook in which we can stick items that we associate with this very strange period of our lives. It will be a diary of the year we've just lived through but also a reminder of some of the things that have helped get us through.

From new recipes we've tried, to poems we've written, TV programmes watched and books read. Every scrapbook needs some illustrations, so we're looking for Lockdown photos too. All will be documented as a permanent record of these strangest of times and as a reminder to us all that although life as we knew it stopped for a year, Prime Time and most importantly the Prime Timers most definitely did not; we just adapted. The plan ultimately would be for multiple copies of the Year Book to be printed, with every Prime Time member receiving a copy so that they have something positive to reflect on from these strangest of times and hopefully it would also be a means by which they feel (re)connected to their Prime Time friends.

Items for inclusion in the Prime Time Year Book can either be sent electronically via email to: primetime@bhcgodalming.org or hard copies and printed photos can be sent, (marked for the attention of Penny Naylor) to The Old Rectory, Old Rectory Gardens, Godalming. GU7 1XB
All items will be copied and the originals returned to their owners.

Computer Repairs



- ✓ Desktop & Laptop Repairs
- ✓ Wireless & Wired Networking
- ✓ PC Upgrades & Tune Ups
- ✓ Virus & Spyware Removal
- ✓ Data Backup & Recovery
- ✓ Server Support



ONSITE REPAIR OR COLLECTION
PROFESSIONAL AND RELIABLE SERVICE
RESIDENTIAL & BUSINESS CUSTOMERS ARE WELCOME



WE ALSO BUY OR REPAIR YOUR

BROKEN IPADS &
MACBOOK LAPTOPS



REASONABLE PRICES AND FAST TURNAROUND

07809 401721 01483 419468

www.TechGuy.biz michael@TechGuy.biz

A J Bennewith & Co CHARTERED ACCOUNTANTS

We are an independent practice
that has been offering a personal
service for over 30 years

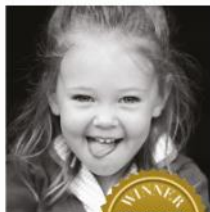
Contact us for all your
accounting needs, tax needs
and a free initial consultation

Registered Auditors
Personal Tax Returns
Companies & Charities

Tel: 01483 539 777
www.bennewith.co.uk



#ahappyheartgoesalltheway



LONGACRE SCHOOL VIRTUAL OPEN DAYS

Individual virtual tours available by appointment. To register please visit our website
or contact admissions@longacreschool.co.uk or tel. 01483 893225.

Hullbrook Lane, Shamley Green, Guildford, Surrey GU5 0NQ

www.longacreschool.co.uk



Bursaries available (up to 100%) Early applications advised.

We hope you all had a lovely Easter and were able to meet up with family or friends for a happy outdoor get together! We are now in the second phase of the roadmap which is beginning to feel like a step back towards normality.

However, our next meeting, on **6th May**, will still be a virtual occasion via Zoom. **Margaret Jackson** will be giving us some insights into the varied roles women played in the **Crimean War**, with tales from **women who were there!** Margaret has a keen interest in history and in portraying historical figures. If you came on the Alan Turing walk around Guildford, you may remember the lady at London Road Station claiming to have just come home from working at Bletchley Park? Well, that was Margaret! It should be an interesting presentation so, do come along and learn more. This will be a **free Zoom meeting** starting at **8.00pm**, but you're invited to join from 7.45pm so you'll have a chance to chat with others. We look forward to seeing you!

BHC PUBLIC Personal Meeting Room: 946 391 4833 Password: 2021
All are welcome to our Zoom Nexus events, including men!

We're excited that we'll be able to have a garden visit this year!! Several NGS gardens



are open for pre-booked tours and, on **Thursday 3rd June**, we'll be visiting, **Spurfold garden, in Peaslake** at **6.30pm** for an early evening tour. A wonderful mature garden set in an area of outstanding natural beauty, with lovely herbaceous and shrub borders, a formal pond, sunken gravel garden with topiary box and water feature, terraces, beautiful lawns, mature rhododendrons and azaleas, woodland paths, and gazebos. As we wander around, we'll come across a collection of surprising objets d'art!

It all sounds delightful; more details to follow!

A date for your diary! On **1st July** at 8.00pm, **Anto Ficatier**, our Youth **Minister**, **will come and tell us a bit about his life before joining** Busbridge and Hambledon Church. He has worked in diverse roles and in many countries, so it should be well worth listening to. Hopefully, we might be able to actually meet in the Old Rectory or Church by then!

Our charity for 2021 is: Phyllis Tuckwell Hospice Care

For more information, please phone Janet Harvey on 423264 or Kate Kaye on 415296 or find us on www.bhcgodalming.org/groups

Nexus – building a network of friendship and support between church and community

HAWKINS BROS.
FINE ENGLISH WINES
WWW.HAWKINSBROS.CO.UK

The English Wine Specialists

Delicious, award-winning,
still & sparkling wines
Chosen from over 40
English vineyards
Friendly, expert advice
FREE, same day, local delivery
Tasting evenings



The Courtyard, Secrett's Farm Shop, Milford, GU8 5HU
07973 321516



Donline
COMPUTER
CONSULTANCY



*Donline offers professional
computer engineering services to:
Small Business, Home Office, &
Home Users.*

*Donline can assist with all of your
IT requirements: Supply & installation of
hardware and software, upgrades,
networking, system and data recovery,
printing, security, cloud computing,
technical support and training.*

Call: Don Tocher, on
07870-643486 or 02392-989594



Microsoft
CERTIFIED
Systems Engineer

Or contact Donline, online:
Web: www.donline.co.uk
Email: don@donline.co.uk

RB Carpentry & Joinery



Cabinetry,
Carpentry &
Joinery

Kitchen Fitting

General Property
Maintenance

40 years
experience

References
available

Busbridge based

Contact :
Rob Beasley
0797 7944162

Pilates in Milford

Mondays: 9:30 am and 10:35 am
Location: BURTON PAVILION



- Pilates to strengthen the core stability muscles
- Improves posture, balance & co-ordination
- Relieves tension and stress
- Tones muscles and prevents injury
- Complements other exercise & relaxes
- Pre- & postnatal conditioning

A great way to get in shape. Easy to learn.

To register call 07767 811074
Or visit www.westsurreypilates.co.uk

Helen Roberts, Chartered Physiotherapist
MCSP, DipAPPhysSport HPC, APPI



Godalming Museum looks forward to welcoming visitors back in mid-May to celebrate its 100th birthday.

The Museum is set to re-open on Tuesday 18th May, initially for drop-in visits on Wednesdays and Saturdays, 10am to 4pm and on Tuesdays for pre-booked visits only. Visitors will enter via a new foyer, shared with Godalming Town Council, who moved into their new offices next door to the museum in April. The new facilities now include an accessible downstairs toilet.

The opening exhibition will celebrate this year's centenary of Godalming Museum. Visitors can discover some of the personalities behind the friendly museum in the heart of Godalming and explore a collection which reflects the community's fascination with, and pride in, the long history of the town. It is hoped that the whole of the downstairs will be open, including the shop and garden, and the main upstairs galleries, and there will be pre-booked access to the library resources. The café will not be open initially. Please be aware that Covid restrictions will still be in place: please wear a mask & maintain social distancing

The number of visitors may need to be restricted at times, and more details will be confirmed on our website www.godalmingmuseum.org.uk. Here you will find many local history resources, including the start of a centenary series of videos celebrating 100 favourite items from the museum collection. Also on the website are 100 fascinating short videos prepared by the curator during lockdown showing artefacts from Godalming's long history.

QUARRY HILL STORES

17 Quarry Hill



Paper Boys and Girls Required in Busbridge

Newspaper Delivery Service in Busbridge

Contact: Mr S. Patel

Tel: 01483 416938

Paul Clifford

Property Services

Qualified "Part P" Electrician

B-Tec Trained Plumber

Plumbing Electrical

Kitchens Bathrooms

Any job from a refit to a washer or fuse

Fully Insured References Available

Paulclifford60@gmail.com 07889 073853



Busbridge Design & Build

www.busbridgedesignbuild.co.uk
07968 022526

Your local firm, specialising in high quality new-builds, extensions, refurbishment and all other aspects of building works

Offering exceptional levels of service & attention to detail at competitive prices

Excellent local references and referrals

Contact us today for a quotation or to discuss your requirements

Honey Landscapes

Garden Maintenance and Construction



Patios & Drives • Hedges
Stonework & Brickwork
Fencing • Planting
Lawns large or small
Turving & Seeding

Tel: 07952915547
honeylandscapes@gmail.com



Russell's Hedges & Tree Care

Tree felling • Reductions • Pruning • Crown Lifting
Thinning • Hedges • Stump Grinding

Fully Qualified & Insured

Russell Beddard

Tel: 01483 208161 Mob: 07722 506720

Email: rsgservices@outlook.com



Summer Fete

Saturday 3rd July | 12-3pm

Busbridge Infant School, Hambledon Road, Godalming GU7 1PJ



Join us for a fun-filled family day out. Enjoy live entertainment and try your luck at traditional fair stalls. Grab some tasty BBQ food and enjoy refreshments from our bar.

*Splat the Rat | Coconut Shy | Obstacle Course | Bouncy castle
Hook a Duck | Bottle Tombola | New/used toys | Candyfloss,
Ice Creams and much more...*

Sponsored by




SING-A-LONG WITH TED

ZOOM, ZOOM, ZOOM!
FREE TODDLER SING ALONG



Tuesdays 9.45am on Zoom
e. Lisa.Olsworth - Peter@bhcgodalming.org
For joining in details

busbridge&hambledonchurch



BUSBRIDGE EVENING WI

Our monthly meetings are now being held online on Zoom on the 2nd Tuesday of each month.

Contact: Ann Heward 01483 420360

Tuesday 11th May
Pat Hutchinson will be speaking on Zoom, the subject will be The Ballet of the Tsars.

Our June meeting will be our 50th Birthday Celebrations.

www.samaritans.org

You can call them free on **116 123** or email them at jo@samaritans.org

Whoever you are and whatever you're facing, they won't judge you or tell you what to do. They're here to listen so you don't have to face it alone.

When life is difficult, Samaritans are here – day or night, 365 days a year



Hearing Aid Repairs

Hearing Aid Clinics at the Old Rectory remain closed at present but Penny Naylor is happy to provide advice regarding how to access hearing aid maintenance and supplies. Contact penny.naylor@bhcgodalming.org or t: 01483 421267

Fed up with Ironing? Let the **Ironing Fairy** do it for you!



You are not alone!

Ironing is the most dreaded household chore. We regularly heard people wishing for a "ironing fairy" to take it off their hands, which is why we started our business.

Why choose us?

- ✓ Free collection & delivery
- ✓ Turnaround in 48 hours
- ✓ Professional service

We can work around you

Whether you require a regular weekly or 'on demand' ironing service.

☎ 01483 428044 📞 07809 401794

www.ironingfairy.net



R. & R. Roofing

Guildford

Roofing Contractor & General Builder



- NEW ROOFS & REPAIRS
- CHIMNEY POINTING & REBUILD
- SLATING • TILING
- HIGH PERFORMANCE TORCH-ON FELTS
- FLAT ROOFS • LEAD WORK
- GUTTERING • uPVC FASCIAS & SOFFITS
- EXTERIOR MAINTENANCE

FREE ESTIMATES EMERGENCY SERVICE

01932 344660

07956 554604

7 Rivermead Byfleet KT14 7BZ

Email: russ@rr-roofing.co.uk

TUSCAN VILLA

Available for holiday lets

*Between San Gimignano
and Volterra*

Recently restored Separate Barn
Sleeps 3/4

Beautiful large secluded villa

In gardens of one hectare

Sleeps 8/10

4 large double bedrooms

2 large sitting rooms

Study, dining room, utility
kitchen/diner

4 bath/shower rooms

15 x 6m infinity pool

Tennis court

www.ilcolto.co.uk

Tel: 01483 808105 or
theresalove440@yahoo.co.uk

Allford

BESPOKE
CABINET
MAKERS

Interiors

For beautiful, bespoke, fitted or freestanding furniture, Allford Interiors designs and hand crafts innovative solutions for all our clients.

We collaborate closely with you from conception to completion. Each commission is personally designed, created and installed from our workshop in Milford.

Previous commissions include kitchens, studies, bedroom and bathroom furniture, bookcases and creative storage solutions.

Using solid timber or high-quality man-made materials, we can create anything from traditional shaker style furniture to unique contemporary pieces.

For a free design consultation, contact Stephen Allford on 07723717897 or for more information see www.allford.co.uk



Help & Support

Abuse Support

Call Surrey Against Domestic Abuse 01483 776822 – safety number; if you would prefer to make a call to the church (01483 421267), then we'd be willing to take some discreet information for you and act with you.

If your situation is threatening please ring 999.

Financial Relief

Our church charity CFSF (Church Family Support Fund) has been quietly giving financial gifts to people in need and are always grateful to know of anyone in the wider community needing this support. See www.bhcgodalming.org/c19-givingandsupport or t: 01483 421267 to let us know of someone in total confidence.

COVID-19 Support

Help with shopping, urgent supplies or a friendly phone call. Email: coronaresponse@bhcgodalming.org or t: 01483 421267

Local FOODBANKS

St Mark's Foodbank

St. Mark's Community Centre/Church,
Franklyn Rd, Godalming, GU7 2LD
Welcomes donations & open:

Mon/Tue/Wed 9.30am-2pm
Thursday 10am-1.30pm

There continue to be **trolley collection** points at Busbridge Church and Tuesley Lane (at the entrance to Godalming College) for donations for **St Mark's Foodbank & Wilfrid Noyce Community Store** on **Tuesdays 8.30am - 11.30am.**

Alternatively, the Wilfrid Noyce Community Store has collection boxes (8am-8pm every day) at:

31 Windy Wood Godalming GU7 1XX
12 Maryvale, Godalming GU7 1SW
16 The Paddock, Godalming GU7 1XD



0800 804 8044

DailyHOPE

A free phone line of hymns,
reflections and prayers

SMALL ADS

VERY LOCAL TOP QUALITY TWO YEAR OLD HARDWOOD LOGS FOR SALE. Felled & processed just a mile from centre of Busbridge. Pick-up load (1.2cm) £90, Dumpy bag (0.8cm) £70 delivered to your drive. **andrew4logs@hotmail.co.uk** or call Andrew on: **01483 424934** or **07952 429071**

GARDENER TRAINED WITH THE RHS, HARD WORKING AND RELIABLE. Will undertake weeding, pruning, mulching and bed work plus more from £20 per hour and medium hedge cutting service priced per job. Contact Matthew on **01483 421547**

HANDY HECTOR THE ODD JOB MAN. Anything considered **07506 598939**. Please see website for more information: <https://www.itforinvestmentbanking.com/handy- Hector>

MATHS TUTOR Experienced tutor and teacher now has sessions available. All levels up to GCSE. Including preparation for Senior School entrance exam. Non-Verbal and Verbal Reasoning also offered. Please call Linda on **07891 708202** or email linda.mlja@sky.com

Professional, confidential & sympathetic counselling

Gill Brennan

MBACP (Accred), FdA (Hons), BA (Hons)
07947 424 538
gillhbrennan@gmail.com
www.godalmingcounsellor.com



PC Doctor Godalming

Fixing computers of all shapes and sizes

If your computer is run down, unreliable and generally out of sorts then why not call for professional help and advice in your own home. All types of computer or network problems dealt with on a "No Fix No Fee" basis.



79 Pullman Lane, Godalming, GU7 1YB
Tel: 01483 424378 | 07876476990
email to: mike.lagan@pcdocgo.co.uk



Karen Regan
Foot Health Professional

KAREN REGAN DIPFHP MCFHP MAFHP
MOBILE FOOT HEALTH PROFESSIONAL
WWW.HEARTANDSOLE.SITE
07776309567

RZI GARDEN MAINTENANCE LTD

Local, friendly gardener offering:

- GRASS CUTTING
- HEDGE TRIMMING
- GARDEN RUBBISH CLEARANCE
- WOODEN FENCING & SHED REPAIRS
- PAVING SLAB CLEANING ...and very reasonable rates!

Call Barry on: **07760 689434**
or email: barry.stone50@yahoo.co.uk



Printed by Linnerlake 07590 047750
www.linnerlake.co.uk
linnerlake@gmail.com

We ask you to please make sure that those people who are the focus in photos have given their consent to be included in our publication & on our website; in the case of minors we ask that this is parental consent. "The Bridge" would like to thank advertisers for their support, but to make clear to readers that it does not offer any endorsement of the goods or services advertised. Views expressed in the articles are not necessarily those of the Editor or Busbridge Church. The Editorial Team reserve the right to edit any articles submitted for consideration for publication.

EDITORIAL TEAM

Cathy Brook (Editor) 420633
Jacky Beale (Small Ads) 423768
Christine Payne 417320
Chris Sollars Lorna Sherwin
Lesley Reeves (Treasurer) via email at:
bridgefunds@btinternet.com

Write to us:

c/o Church Office, The Old Rectory, Old
Rectory Gardens, Godalming GU7 1XB.
St John the Baptist Church
Rector: Rev Simon Taylor
01483 421267

COPY DATE

JUL/AUG 2021 EDITION

WED 16TH JUNE

PUBLICATION DATE: FRIDAY 2ND JULY



Vanessa Edwards Hypnotherapy

Cognitive Hypnotherapist
DipCHyp HPD NLPprac

www.vanessaedwardshypnotherapy.co.uk
info@vanessaedwardshypnotherapy.co.uk
07523101952

I specialise in helping women with anxiety, stress, confidence issues and weight loss. I also work with phobias, OCD, bad habits, smoking, depression and insomnia.

If your issue is not listed here please contact me.

Advertising

SMALL ADS are designed to advertise local services.

£5 per insert , 40 words maximum.

For Sale items £2,

20 words maximum.

Please contact Jacky at:

jackybeale@hotmail.com

DISPLAY ADVERTISING is for businesses who wish to advertise in full, half, quarter or eighth page format.

We deliver free of charge to over 1850 local homes. Please contact Cathy at:

editor.atthebridge@gmail.com

We reserve the right to decline advertising or payment for advertising at our discretion.

g b j @ home

Home boarding & day
care for smaller dogs



We take care of them when you can't
Familiar local walks



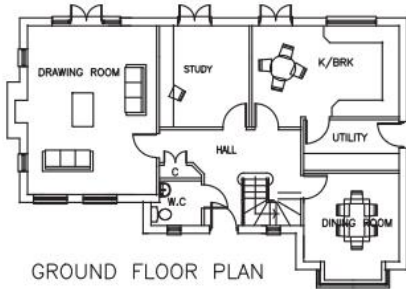
Call

Lesley on 0752 1535 079

gbjathome@btinternet.com



FRONT ELEVATION



GROUND FLOOR PLAN

PLANNING & DESIGN SERVICE LLP

Architectural drawings for
Extensions, Alterations &
New Build

Free No Obligation Quotations

Tel: 01483 417555

Mob: 07818 014357

www.architecturesurrey.co.uk

simonplanning.design@btinternet.com



Free valuations Monday-Friday:
9:30am-5pm

Ewbank's



Surrey and Hampshire's Premier Antique and Specialist Auctioneers

The Michael Armstrong Cinema Collection: 7 May
Antique & Collectors': 12 May
Fine Wines & Spirits: 17 May
Entertainment, Memorabilia & Movie Props: 27 May
Jewellery, Watches & Coins: 16 June
Silver & Fine Art: 17 June
Antiques, Clocks & Furniture: 18 June
Toys & Models: 24 June
James Bond 007: 2 July
Asian Art: 15 July
Vintage Fashion & Textiles: 15 July

Accepting consignments now

01483 223101

Burnt Common Auction Rooms, London Road, Send, GU23 7LN

info@ewbanks.co.uk

www.ewbanks.co.uk