

The Bridge

SEPTEMBER & OCTOBER 2020



Spanning the COMMUNITY in Busbridge

www.bhcgodalming.org/thebridge

PRIOR'S FIELD

GODALMING SURREY



GSA Girls' Boarding and Day School 11-18

*'The unicorn of education' -
the stuff of childhood dreams.*

- Tatler Schools Guide 2020



PRIOR'S FIELD - THE PLACE TO ACHIEVE!

Call now to book your place at our next Open Event:
Open Day: Saturday 26 September 10.00am - 1.00pm
01483 81055 | www.priorsfieldschool.com

#believe #achieve #succeed

Registered Charity No. 312038



CONTENTS

Welcome to our autumnal edition!

PAGES 10-12 *An Uncommon Walk*

Chris Payne revisits local gem, Thursley Common, charting its plight and rejuvenation since a devastating fire in late May.

PAGES 14-15 *Celebrating 50 Years of Busbridge WI*

Sharing memories past and present of a thriving local institution.

PAGE 17 *Curate Dave Preece*

Dave shares his thoughts with us.

PAGES 18-19 *Hydestile Resident Animals*

Coming to the rescue of our feathered friends.

PAGES 22-23 *Local Author Gill Thompson's New Novel*

Godalming College tutor, Gill Thompson, shares her inspiration for her new novel 'The Child on Platform One.' An insightful novel into children's experiences during World War II.

FRONT COVER PHOTO: Minster Road crab apples by kind courtesy of Chris Payne

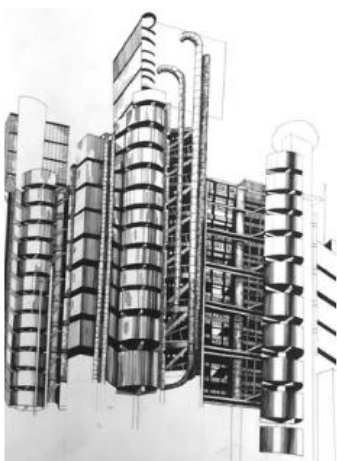
ART in Lockdown

It has obviously been a challenging time for everyone since lockdown began at the end of March 2020.

Due to Covid-19 and the restrictions, here at Godalming College, we were unable to hold our popular Arts Festival in July where we usually showcase work from our range of creative arts subjects. Nonetheless we have been delighted

with the work that students have been producing with limited resources and materials at home.

Students were kept busy being taught remotely through Microsoft Teams, continuing to be set projects and briefs to support their component 1 work. All students had access to the Adobe Suite from home, enabling them to use programmes such as Photoshop & Illustrator for their work. Here's a taster of what they've been up to.



We are delighted that 2 of our students were selected for the Royal Academy Young Artists Online and Onsite Exhibition this year, congratulations to Amy Musgrave and Emily Silvester.

Godalming College

*Left: Emily Silvester — PLASTIC
I wanted to demonstrate how children's toys can create an unhealthy and unattainable obsession with body image and modern beauty standards.*



Summer of HOPE

During June, St Edmund's School was inspired by CAFOD's (Catholic Agency for Overseas Development) 'Summer of Hope Appeal', helping support those globally in need during the coronavirus crisis.

Through the children's fundraising efforts, including a mufti and crazy hair day, over £350 was raised. Pictured top are our Year 6 pupils with their letters spelling, 'Hope is Contagious.' We also started a new hall display to tie in with the 'Summer of Hope'. Alongside the rainbow, home learning work from children across the school was displayed to show that although we are apart at the moment, we are still together. Pictured above are some of the younger children dancing in the hall under the rainbow!



Elizabeth Higgins, Headteacher

90th Anniversary REUNION *Godalming County Grammar School*

Owing to the coronavirus global pandemic, the committee of the Old Godhelfian Association (OGA) has decided to postpone the 90th Anniversary Reunion on Saturday 17th October 2020 until Saturday 16th October 2021, when we hope there will be a safer environment and we can meet each other face to face with no worries or barriers.

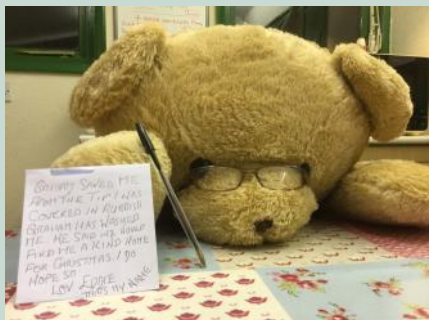
However, the occasion will not go unmarked and we have plans for a virtual meeting. If you are already a member of the OGA you will receive information about the event in our newsletter. If you would like to become a member, please email Eleanor Andrews (ewandrews3@gmail.com) with your details and we will put you on the circulation list. See our website www.theoga.org for further information.

Eddie's STORY

When he's not out rescuing animals, Graham Cornick from Hydestile Resident Animals is out rescuing other furry friends! Graham explains, "I was passing a local skip when I noticed this teddy submerged in the rubbish with only half his head and neck exposed, and a ribbon tied around his neck. Borrowing a long pole with a hook on the end, I slipped the hook through the ribbon which I hoped wouldn't snap. I then gently lifted him out; he looked awful filthy from top to bottom. I placed him in our car and set off home. On arrival I took Eddie (by this point I'd named him) into one of our units and with a struggle I got him into the

washing machine. "It's for your own good," I said, as I closed the door. Some time later I got him out looking and smelling so much better. Then came the real task to find him a forever home and certainly in time for Christmas. One of our volunteers arrived with her daughter Rosa. Rosa took one look at him and asked her mum if she could take him home. It was soon agreed and off went Eddie with his new found friend. Ahhhhh!

Do it again? You bet ya!
A teddy is a forever friend."



Godalming GOOD NEIGHBOURS



Godalming Good Neighbours (GGN) proudly announced its first year anniversary since its launch in July last year. Since the scheme started, it has gone from strength to strength and assisted hundreds of local residents of all ages. Volunteers have helped with jobs such as: lifts to hospital and medical appointments, the shops, hair dressers, opticians, home visits and much more.

Since Covid 19, transportation has not been possible, however they are continuing to support the vulnerable by doing food shopping, collecting prescriptions and checking in by phone on all their clients. As soon as it is safe to do so GGN will be back to normal, assisting in any capacity that is needed.

If you need help or would like to find out more about volunteering, contact details are below.

Congratulations - it's been a tremendous first year!

**A big thank you to all our fantastic volunteers and supporters
who have made it all possible.**

07943 274461

godalminggoodneighbours@gmail.com



**Emery &
Orchard**
ESTATE AGENTS

Passionate about property

SINCE 1993



EMERY & ORCHARD

Godalming's **Local** Independent Agent **Established** for over **25** years.

Property to sell in Godalming or the Villages?

Then contact Tony Emery
or Jeremy Orchard on
01483 419 300
to arrange a
Free Market
Valuation.

20 High Street
Godalming
GU7 1EB

www.emery-orchard.co.uk



Cranleigh Tiles & Bathrooms

246 High Street, Cranleigh, GU6 8RL



Whatever the budget, from non-branded basics and essentials to more sophisticated designer products, our family-run bathroom showroom led by Craig Cooper is here to help. We offer free, no obligation estimates and advice on everything bathroom related.

Bathroom Essentials • Showers • Toilets & Washbasins • Baths
Wet Rooms • Lighting • Tiles & Flooring
Design & Installation Available

Showroom open by appointment
10am to 4pm Tuesday to Friday

All enquiries warmly welcomed but in order to promote safe shopping please can we ask you to book an appointment prior to your visit.

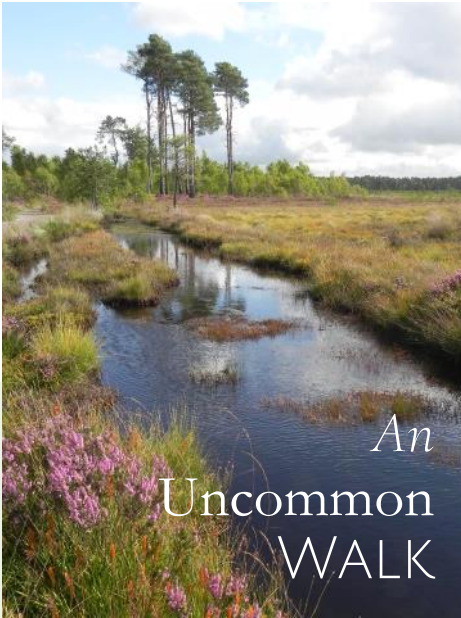
Telephone 01483 272727 or 07539 145513
craig@cranleighbathroomstudios.co.uk
www.cranleighbathroomstudios.co.uk



Youth Discipleship Camp took place over 3rd-5th August in the Old Rectory Garden, Busbridge (adhering to Covid rules). Youth Minister Anto & the team provided a packed three day programme learning about following Jesus with various activities including pottery, sports & outdoor games!



Youth work in Busbridge contact:
anto.ficatier@bhcgodalming.org



One approach to the Common from Busbridge is to drive out to Elstead, turn left at the Woolpack pub and continue a mile or so out of the village to the Moat Pond car park. Sometimes the Moat Pond is totally still and blue with crystal clear reflections, sometimes grey and rippled by a wind and/or clusters of mallards, sometimes covered with a film of ice in winter, and embellished with pink water lilies in summer. A number of small sandy tracks head off in various directions, so there are many possibilities for different walks.



are the deep purple southern marsh orchids. There are a few very rare plants if you have inside knowledge as to where to look for them, such as the prostrate marsh clubmoss, only found in one very small location. You may spot the insectivorous sundews too. A number of other types of moss, fungi, lichens and ferns proliferate.

There's nothing common about Thursley Common, whatever the season, and I would have said that you will never be bored on the Board Walk! But after the fire on May 30th, probably caused by that bane of heathland and woodland, a disposable barbecue, there is very little board walk left, burnt into dangerous and unstable fragments (pictured below), and one is forbidden to walk on those paths. Fire-fighters from 4 counties, aided by local farmers, fought the blaze over 3 days and nights. About 150 hectares was devastated and local people evacuated from their homes while it was brought under control.



If the weather has been very wet, wellies are advisable: some of the puddles can be quite deep! Be careful not to stray into deep water on either side of the tracks in places. In misty conditions the silhouettes of pine trees loom in a very dramatic fashion, maybe with a crow perched on a top branch. There are a number of information boards that illustrate the types of dragonfly that can be seen in this area in summer. The bright yellow flowers of bog asphodel are a summer delight, as

The birdlife here is also interesting. I have yet to see a Dartford warbler, though I live in hope, as a neighbour has seen it here. They tend to perch on top of gorse bushes, as do stonechats (pictured below) – so-called because their song sounds like stones being

clashed together. You may well spot redstarts and linnets, and a buzzard or red kite overhead. In summer you will probably come across lizards basking. In one place there are the remains of an old pylon with a huge dragonfly sculpture perched upon it and a seat to rest your weary limbs!



An Uncommon WALK *continued*

Funds are needed for clearance and to promote regeneration of habitats here and updated information boards to include fire precautions. PLEASE NEVER use a disposable barbeque in such areas, and if you would like to support the restoration fund for Thursley National Nature Reserve, email elsteadpc.clerk@gmail.com for cheque donations or go online to www.gofundme.com/f/preserve-our-reserve-thursley-nnr-support-fund

Chris Payne



When life is difficult, Samaritans are here – day or night, 365 days a year.

You can call them free on 116 123 (within the UK or Ireland) or email them at jo@samaritans.org.

Whoever you are and whatever you're facing, they won't judge you or tell you what to do.

They're here to listen so you don't have to face it alone.

www.samaritans.org

“Just wonderful”

Real words from really happy residents, during lockdown.



Our villages are filled with people who, more than ever, truly appreciate *the power of community, in later life.*

Is now the right time to move to an Inspired village?

**BRAMSHOTT
— PLACE —**

Inspired in Hampshire

MOVE FREE, MOVE NOW!*

- ✓ No stamp duty on any of our properties.
- ✓ We cover the costs of selling your property, removals, your legal fees and decluttering.

Come and look around safely, call **01428 788 250**
or visit bramshottplace.co.uk/TimeToMove

*Terms & conditions apply. You must complete by 1 December 2020. Please see our website for full details.



Two of our members at a recent WI Centenary event



A quilt made by our sewing group

Celebrating 50 Years of BUSBRIDGE WI

This year our WI is celebrating 50 years since we opened in 1970

The National Federation of Women's Institutes (NFWI) is a thriving national charitable organisation for women aged 18 upwards founded in 1915 to provide friendship, support and education. Initially, because most of the menfolk had left to fight in the war, it was formed to support countrywomen who had been landed with running farms and to provide education in animal husbandry and hygiene, nutrition, childcare and basic domestic skills. Later, during WW2 the WI became famous for vegetable preserving and jam making to save wasting fruit and vegetables. From the beginning the WI has campaigned and lobbied nationally to enhance the lives of women and families by joining together with other organisations to improve the standard of living and helping to build community. Two of the most relevant campaigns at present are about relieving loneliness, and lobbying for more local bus services.

Here in Busbridge we have had two WIs. The original one was held in the afternoons and eventually closed in the 1980's. However it was felt, even before then, that we needed another WI to hold meetings in the evening as it would be more accessible for working women and young mums. So Busbridge Evening WI was formed in 1970.

There were about 90 founder members with a long waiting list. Most young mums with small children in those days didn't work but were pleased to escape the house to socialise once a month on a Tuesday evening once their husbands had come home in the evening from London. It was a different world! We still have a few founder members in our midst.

Apart from our monthly meetings with interesting speakers, over the years we have run many activities including badminton, tennis, run classes in upholstery, yoga, crochet, pewter and copper work, quilting, had theatre trips, visited historic houses and gardens and most importantly made life long friendships.

*Our first President
was Lorna
Pritchard Thomas
and in those days
the WI was very
formal and we
were all known as
Mrs "Surname"!*



A tombola at local fete



Our entry "Carnival" exhibit at the Cranleigh Show

Normally we have a thriving book club, walking group, sewing group, simple monthly lunches and coffee mornings at members' houses, plus a newly formed gardening and a craft and natter group. Where appropriate some of these are continuing on Zoom because of the Covid-19 pandemic.

This year we were due to celebrate 50 years and we were hoping to celebrate in style in this June. However, this has now been put on hold because of Covid-19 so we plan to be getting together and showcasing our WI before too long even if we have to wait until 2021. Meanwhile we have to meet on Zoom or in small groups in gardens.

Our WI here is about friendship, supporting each other and learning new skills and hopefully we shall be out at theatres and cinema, restaurants and pubs to meet again soon. We have about 50 members and normally meet on the 2nd Tuesday of the month at Busbridge Village Hall 7.45 for 8pm start but at the moment, of course, everything is on hold because of Covid-19. Why not visit our national website www.thewi.org.uk and Surrey Federation of WIs www.surreyfedwi.org.uk website to learn more about our organisation.

If you would like further local updated information please ring Diane on 01483 420640.

Ann Heward – July 2020



Our walking group out with the warden at Hindhead

Appliance Service and Sales

- Repair of most main makes
- Built-in and Freestanding
- New appliances with installation
- * Built in and American F/F

Checkatrade.com
Where reputation matters

**Cooker/Oven
Dishwasher
Washing Machine
Tumble Dryer
Fridge/Freezer ***

Elstead (01252) 705198

www.applianceexpert.co.uk



Sunrise: A Great Place to Call Home

Living in a residential care community like Sunrise, it's literally home-from-home. Every resident is encouraged to bring in their own furniture, and their pets. High quality care and support is provided in an environment where residents can make new friends and enjoy a variety of events.

Our programme of activities each day offers a full social life, from musical entertainment to a pub quiz, tea dance to art and crafts, games to flower arranging.

Join in as much or as little as you like – our desire is that residents live a happy life that suits them.

Call us on
01483 604099
to book a tour.

Sunrise of Guildford
Astolat Way, Peasmarsh,
Guildford, Surrey GU3 1NE
SunriseGuildford.co.uk



SUNRISE
SENIOR LIVING
GUILDFORD

Dave Preece, Curate, Busbridge Church



Hi everyone.

It has been a very strange time since I last wrote in The Bridge and we're still in a time of uncertainty and change. As I write it is mid-August and I'm looking forward to September.

I have managed to keep to the rhythm of the academic year for quite a long time through studying, working in schools, and now having school and nursery aged children. I always look forward to September as for me the new academic year brings a sense of change and opportunity. I still look forward to September this year even though the last 5 months have been different and difficult.

We are still in the midst of the global pandemic but it feels like we have a little more sense of where we are headed. There is talk of the 'new normal.' There are many things that have changed and will remain changed; as a society and as a church we will probably not be returning to everything we once knew. The future will be different. We can look upon this as something challenging and difficult, or we can face the future looking for opportunities to change for the better.

In the Bible the prophet Isaiah speaks to the people of God while they are in exile. They mourn what they have lost and feel like hope is lost. God promises to restore them and show his authority over the universe. Using Isaiah as his mouthpiece God says 'See, I am doing a new thing! Now it springs up; do you not perceive it? I am making a way in the wilderness and streams in the wasteland.' (Isaiah 43:19 NIV).

As we enter the 'new normal' and navigate change how can we look for what God is doing? What opportunities can we see around us?

As we face change and opportunity this September and October why not try church as something new?

Hydestile NEWS



*An update from our
friends Lyn and Graham*

*Cornick at Hydestile Resident Animals and the challenges of recent
times during Covid-19.*

It was challenging at first staying the required 2 metres apart due to Covid-19 but we soon got the hang of it. We were lucky to have all our PPE equipment in place! Tea break at 11am is not the busy time it was; staff now sit 2 metres apart while Graham and I have been having ours in our kitchen talking to staff over the intercom!

Sadly we had to temporarily halt our volunteers and only had paid staff here, which has proven to be a lot of work for all of us (only 2 staff in the animal units at one time). Volunteers are so important at Hydestile and we all enjoy having them about as much as they enjoy being here; we also miss seeing those of you who call into reception for various reasons. We are now having to meet you all 2 metres apart at the gate. Graham has enjoyed saying "Stay Safe" to everyone. He has been unable to do any of his talks, but like me has spent a lot of time giving advice on the phone and arranging a time to bring in animals that need our help as well as doing most of the hand feeding of babies that arrive. So much for semi-retirement, we and our staff are exhausted!

This red kite came into us unable to fly. Two volunteers, Emma and Karen, brought the kite to Hydestile—it possibly had flown into a power line? We hand fed the kite until able to eat on its own. After a few days it was standing so we moved it into one of our aviaries. It flew so well! A few days later it was released back into the wild.



We had never had a guinea fowl in as a patient, but we ended up having two brought in within a short time of each other. One of them, Sir Guy Guisbourne, had been living a happy life at the same location in a lovely area of Surrey for 10 years, being fed by the local residents. Guy came into us at the end December 2019 with blood coming from his tail feathers; we believe he had been hit by a car and the bruising caused a lot of bleeding through the quills! We gave Guy antibiotics



Above : Best birdie buddies—Sir Guy Guisbourne and Lord Thorncombe Watts!

and with time he recovered well, thank goodness. Meanwhile... (a day later) we had a partridge arrive with very bad conjunctivitis. We treated him with eye drops, and once his eyes were better he went into the aviary with Guy and became best of friends. We called the partridge Lord Thorncombe Watts!



Right : We had many baby birds with us for various different reasons. Six baby robins were brought into us that had been found in an engine of a car, which due to lockdown had not been used. The owners of the car had taken it to be serviced. The mechanics working on the car discovered a nest in the engine and phoned us to bring them to Hydestile. The baby robins were very thin and possibly had not been fed for a while.

Thank you Lyn and Graham for all you do for our local wildlife. Ed

Hydestile Resident Animals,
Nutwood Cottage,
New Road,
Hydestile GU8 4DJ

Tel: 01483 860313

www.hydestileresidentanimals.co.uk



QUARRY HILL STORES

17 Quarry Hill



Paper Boys and Girls Required in Busbridge

Newspaper Delivery Service in Busbridge
Contact: Mr S. Patel

Tel: 01483 416938

Paul Clifford

Property Services

Qualified "Part P" Electrician

B-Tec Trained Plumber

Plumbing Electrical
Kitchens Bathrooms

Any job from a refit to a washer or fuse
Fully Insured References Available

Paulclifford60@gmail.com 07889 073853



St Hilary's

Preparatory School and Nursery, Godalming

Now welcoming boys up to Year 5 in a phased plan to be fully co-educational by Sept 2022



Open Mornings
Friday 2nd October
Saturday 3rd October

Bursaries available for Year 3 Entry

Tel: 01483 416551 • @StHilarysSchool
Email: registrar@sthilarysschool.com www.sthilarysschool.com

Fully Insured

Fully Qualified

Corrective Surgery

Reducing

Pruning

Thinning



Felling

Dismantling

Hedge Trimming

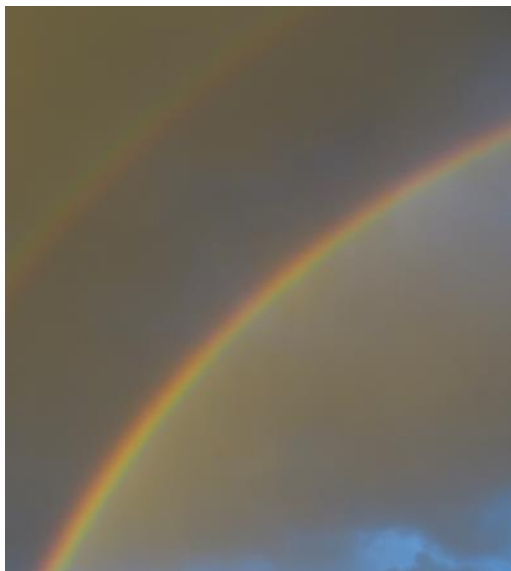
Stump Grinding

Julian Draper NCH Arb

Tel 01428 681978 Mob 07968 827711

forkingbranches@hotmail.com

Double RAINBOW



Left : A special sight; 28th June 2020 in Busbridge

To see rainbow you need to look towards a rain shower with the sun shining directly behind you, no higher than 42° above the horizon – unless you are looking down from a very high viewpoint. If the cloud or shower is viewed from above (e.g. from a mountain or aeroplane) the rainbow appears as a complete circle, called a “glory”.

The raindrops reflect the sunlight off their back inner surface, acting as prisms to split the light into its separate wavelengths by refraction; hence we see all 7 different colours. The longer wavelengths (towards red) bend less than the shorter, bluer wavelengths, so the red part of the arc has a less tight curve than the bluer colours. The drops higher in the sky reflect only the red wavelength at the correct angle to travel to the observer’s eyes, whereas the lower droplets each bounce a different colour respectively so we see the whole spectrum. A secondary, fainter bow, with the colours in reverse order, is viewed when the sunlight reflects twice from different angles within the raindrops. It depends on the size of the raindrops.

There are no crocks of gold at the end of rainbows - but the science doesn’t at all detract from their glorious beauty!!

Chris Payne

Nexus
linking church & community

We thought you’d like to know that we have received a lovely letter from the Hydon Hill Cheshire Home thanking us for the £500 cheque we sent to them. They plan to put this towards the enhancement of the residents’ garden, to provide a well-designed outdoor place for residents to use and enjoy. It will also become a treasured, tranquil space for them to spend time with friends and family.

We think this a lovely way to use the money we raised at our Charity Quiz last December. Hopefully, we can have a celebration hand over of the cheque in the garden at some point in the future.

We hope you are managing to keep cool, somehow, in the recent heatwave and we’ll keep in touch about any possibility of future Nexus meetings!

Kate Kaye, August 2020



GILL THOMPSON: The Child on Platform One

Gill Thompson, a local author and English tutor at Godalming College, has recently published two novels, both inspired by true stories of children who were affected by the Second World War.

What prompted your research to write about these wartime situations that affected children? How did you go about it?

My father was in the RAF during the second world war, landing in Normandy a few days after D day, and my mother was at school (most of her youth seemed to have been spent in an air-raid shelter reading Jane Austen!), so I suppose my childhood was shaped by my parents' wartime experiences. But I hadn't consciously set out to write a novel set in these



times until I happened to see a YouTube clip of Esther Rantzen congratulating Nicholas Winton (pictured left), fifty years after the last Kindertransport had left, surrounded, unbeknown to him, by a sea of adults whom he had rescued as Czech child refugees. It makes for poignant viewing (<https://urlz.com/2SFW>). That led me to research German-occupied Prague, and it was then that I read of the extraordinary events at Terezin (known to the Germans as Theresienstadt), where Jews had been allowed to paint, sing, play

instruments, give lectures and act. Most notably they put on a performance of Verdi's *Requiem*, ironically and subversively declaring God's judgement on the Germans listening. You can get a taste of it here: <https://urlz.com/Ut4Q>.

So I suppose my research starts with being inspired by an event from history, then reading extensively about it. However, I think the most authentic and original research is best conducted with people who lived through these times, so I spoke to a friend's mother who had been a German refugee on the Kindertransport, and a Czech lady whose father had escaped from Auschwitz. They told me things I couldn't find out from books, and I hope I have done their memories justice in the novel.

What have you learnt from the students at Godalming College in your time there?

I am lucky enough to teach some lovely students. I think Godalming students are particularly special, but then I'm biased! Over the years I have worked in pastoral as well as academic work, and I've observed that human nature doesn't change: today's teenagers are just as brave, anxious, conflicted and talented as young people back in the 1930's and 40's. My protagonist, Eva, is sixteen when the novel starts so I was able to draw on my knowledge of teaching older teenagers for most of my working life. I hope my students think I have made her realistic, although I can assure them she isn't based on anyone in particular!



What writers have inspired you?

Gosh, there've been so many! I love the late Helen Dunmore for the way she researches historical events so meticulously and then brings them to life in compelling stories. I admire Hilary Mantel hugely and am completely in awe of her work ethic. I am fascinated by what Kate Atkinson has done with form, and I think Phillippa Gregory is amazing for the way she constructs powerful characters then weaves intriguing narratives around them. All of these writers have influenced me in some way and I am hugely indebted to them.



2 BOOKS BY GILL THOMPSON

*Gill's first novel, **The Oceans Between Us**, is set in the 1940s and the immediate post-war decade. Two families, in Britain and Australia, become linked by a bombing tragedy in London and the shipping of supposed orphans to Australia to improve and bulk out the white population there. It is fiction soundly based on fact – unpalatable fact we would think today – a tale of injustice and cover-up, painted in the guise of offering care and opportunity for unfortunate children. There were times when I wanted to yell with anger at more than one of the characters! It certainly opened up a period of our joint history that neither side can be proud of.*

*The second, **The Child on Platform 1**, starts in the 1930s with the appalling behaviour of the Nazis in relation to a Jewish family in Czechoslovakia. This is contrasted with a relatively wealthy family in Hampstead, London. The stories of the two families become interwoven via the concentration camps and the escape of evacuee children on the Kindertransport trains – a wonderful melding of real events with fictional characters which highlights the heart-rending choices and suffering of those who experienced the ramifications of World War Two.*

Both books are deeply researched and written in a tenderly sympathetic manner, poignantly describing the love of a mother for her child and vice versa, drawing us in to the effects of the war on the wider families and communities of Britain, Europe and beyond – effects that have in some manner persisted down the generations. Both are a "must read"!

Chris Payne

Open Mornings

From 9.45am

Weds 23rd September 2020

Weds 14th October 2020

Fri 13th November 2020

Taster Afternoons

Fri 2nd October 2020

(for Reception entry 4+)

Thurs 19th November 2020

(for Year 1 - 6 entry)



St Catherine's Prep, Bramley

GSA Day & Boarding School since 1885 | 4 - 18 years

Guildford GU5 0DF | www.stcatherines.info



Russell's Hedges & Tree Care

**Tree felling • Reductions • Pruning • Crown Lifting
Thinning • Hedges • Stump Grinding**

Fully Qualified & Insured

Russell Beddard

Tel: 01483 208161 Mob: 07722 506720

Email: rsgservices@outlook.com



Barbecued CABBAGE

with Mustard & Chive Dressing

Here's hoping for an Indian summer this September! I've been getting more and more requests for vegetarian dishes on the BBQ. A friend cooked this simple charred cabbage dish and it was so delicious I had to create my own version. Serves four as part of an alfresco feast.

1 Cut the cabbage into quarters lengthways (don't remove the core as it will help to hold it together).

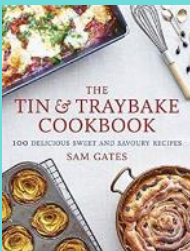
2 Brush generously With olive oil and place over medium coals. Using tongs turn the cabbage frequently so that it is charred but cooks evenly without burning.

3 Whisk three tablespoons of olive oil with the vinegar, mustard, chives and season liberally with salt and pepper.

4 Remove the cabbage from the grill and cut each quarter in half lengthways. Pour the dressing over the top while it is still hot.

INGREDIENTS

- 1 Sweetheart cabbage
- Olive oil
- 1 Tbsp white wine vinegar
- 2 Tbsp fresh chives
- 1 Tsp Dijon mustard
- Salt and pepper



Sam's book *The Tin and Tray bake Cookbook* is available now.

-  [samgatesfood](#)
-  [@samgatesfood](#)
-  www.samgatesfood.co.uk



Hearing Aid Repairs

Hearing Aid Clinics at the Old Rectory remain closed at present but Penny Naylor is happy to provide advice regarding how to access hearing aid maintenance and supplies. Contact penny.naylor@bhcgodalming.org or t: 01483 421267

Busbridge & Hambledon Financial Relief

Our church charity CFSF (Church Family Support Fund) has been quietly giving financial gifts to people in need and are always grateful to know of anyone in the wider community needing this support. The CFSF has existed for more than 30 years and was formed to offer love and care financially to individuals and families during times of hardship. See www.bhcgodalming.org/c19-givingandsupport or Tel 01483 421267 to let us know of someone in total confidence.

busbridge&hambledonchurch 



**SING-A-LONG
WITH TED**

**ZOOM, ZOOM, ZOOM!
FREE TODDLER SING ALONG**

Tuesdays 9.45am on Zoom
e: Lisa.Olsworth-Peter@bhcgodalming.org
For joining in details

busbridge&hambledonchurch 

BHC Coronavirus Community Response

Here to Help



SHOPPING
PRESCRIPTIONS
PHONE CALLS
& RECEIVING RECOMMENDATIONS FOR
FINANCIAL SUPPORT



e: coronareponse@bhcgodalming.org | t: 07990 117 869

Please note the dedicated corona response telephone line is no longer going to be in service from sometime in early September. Anyone with a CV19 query after that date should ring the church office instead on 01483 421267.

Abuse Support

IMPORTANT CORRECTION

We've been supporting a few people experiencing trauma due to a situation in the home. If you have been getting by in silence, we'd invite you to call Surrey Against Domestic Abuse 01483 776822 – safety number; if you would prefer to make a call to the church (01483 421267), then we'd be willing to take some discrete information for you and act with you.

Please note an important correction to the July-August edition of The Bridge—please disregard the information contained therein for which we apologise.

The correct advice from Surrey Against Domestic Abuse, is,

if your situation is threatening please ring 999.

Busbridge & Hambledon Church



6 September

9AM Heritage Service on YouTube

10AM Drive in Service *TBC*, a field in Busbridge. See the website for confirmation and details.

Sunday Services from 13 September

9am Heritage Service at Hambledon Church, livestreamed on YouTube.

10am Sunday Worship at Busbridge Church—with sound in the churchyard & livestreamed on YouTube.

4pm Outdoor Family Service in the Old Rectory Garden, Old Rectory Close, off Hambledon Road (access via Busbridge Church) during September. Watch the website for the plan for October onwards.

Under the current government and Church of England guidance, face coverings are compulsory in church services. Seating is in bubbles spaced 2m+ apart. There is music but no singing. Busbridge Church is cooperating with NHS Test & Trace and requests contact details from those attending services.

See www.bhcgodalming.org/what's-on

For service times, and online events on Zoom and YouTube:
Prayer meetings, mid-week reflections, courses &
Children's and Youth activities.

All links and info on www.bhcgodalming.org



Godalming MUSEUM

GODALMING MUSEUM partly re-opened on 17th August. Much of the museum will remain closed for now but there is a wonderful NEW EXHIBITION entitled **GODALMING'S SECRET CEMETERY**, based on the 9th-12th century (Saxon-Norman) cemetery excavated in Godalming in 2014 and on subsequent research at the University of Roehampton. Find out what this unique archaeological site has to tell us about Godalming's first inhabitants and their world.

The number of visitors will be strictly limited and all visits must be booked in advance. Visits from August 17th to September 4th are reserved for the museum's volunteers, friends and patrons. Visits from 7th September are available for all. During the exhibition, the museum will be open on Mondays and Fridays only, between 10.30am and 4.30pm. To book please ring Godalming Museum 01483 426510 between 10am and 1pm, Monday to Friday. If need be, leave a message.

There will be a maximum of two staff members and four visitors in the museum at any one time. However, if your household (or social bubble) is made up of more than four people, let us know when you are booking and you should be able to visit together, if social distancing is not required.

Godalming Museum prides itself on being a child friendly place. Normally we have many interactive areas designed for our younger visitors, but we cannot allow access to these at present. We do not want to disappoint anyone, so feel we should point out that this exhibition is really only suitable for adults and older children (aged 12 and over). If you wish to bring young children with you, please mention this when you book. They will need to remain under your direct supervision at all times in order to maintain social distancing. The space is very limited so pushchairs may have to be left outside.

The café and the whole of the upper floor, including the toilet, will be closed. There will be a limited range of items for sale in the museum shop, and access to the garden will be restricted. Entrance is free, but donations are very welcome to help to maintain the running of the museum.

Meanwhile don't forget, you can make your own virtual visit at on the

Godalming Museum Facebook page

or on the website

www.godalmingmuseum.org.uk

Godalming Museum, 109a High St, by the Pepperpot.

Computer Repairs



- ✓ Desktop & Laptop Repairs
- ✓ Wireless & Wired Networking
- ✓ PC Upgrades & Tune Ups
- ✓ Virus & Spyware Removal
- ✓ Data Backup & Recovery
- ✓ Server Support



ONSITE REPAIR OR COLLECTION
PROFESSIONAL AND RELIABLE SERVICE
RESIDENTIAL & BUSINESS CUSTOMERS ARE WELCOME



WE ALSO BUY OR REPAIR YOUR

BROKEN IPADS &
MACBOOK LAPTOPS



REASONABLE PRICES AND FAST TURNAROUND



07809 401721



01483 419468



www.TechGuy.biz



michael@TechGuy.biz



Wishes to appoint an

ADMINISTRATOR

This post is initially part-time for 12 hours per week to include Friday mornings.
Salary £10.36ph.

The person appointed will have good IT skills and be sympathetic to our Christian ethos. When appointed he/she will:

- Undertake administrative tasks.
- Be a focal point for contact.
- Co-ordinate Church lettings.
- Manage the social media presence.

For a fuller job description & application form see:
godalmingbaptistchurch.org.uk

Closing date 30th September 2020



St Catherine's, Bramley

GSA Day & Boarding School since 1885 | 4 - 18 years
Guildford GU5 0DF | www.stcatherines.info



LONGACRE SCHOOL

INDEPENDENT PREPARATORY SCHOOL FOR BOYS AND GIRLS AGE 2 ½ - 11 YEARS

To register for an Open Morning or to arrange a virtual tour please visit our website or contact us on tel. 01483 893225 or email admissions@longacreschool.co.uk

Hullbrook Lane, Shamley Green, Guildford, Surrey GU5 0NQ
www.longacreschool.co.uk

ALLFORD

PROPERTY MAINTENANCE

I specialise in the design, fabrication and installation of bespoke fitted and free standing furniture. I am also able to offer high quality property maintenance work including carpentry and joinery, and interior decorating. For more information including photos and testimonials see my website www.allford.co.uk

Whatever the job - from fitting a kitchen to hanging a picture - I aim to work to the highest standards to ensure that all my customers are completely satisfied.

For a free estimate or advice, contact Steve Allford on **07723717897**, or email info@allford.co.uk

Striving for excellence

TUSCAN VILLA

Available for holiday lets

*Between San Gimignano
and Volterra*

Recently restored Separate Barn
Sleeps 3/4

Beautiful large secluded villa
In gardens of one hectare
Sleeps 8/10
4 large double bedrooms

2 large sitting rooms
Study, dining room, utility
kitchen/diner

4 bath/shower rooms
15 x 6m infinity pool
Tennis court

www.ilcolto.co.uk

Tel: 01483 808105 or
theresalove440@yahoo.co.uk



The Outward GIVING GROUP

Have you heard of us?

Alongside its work within Busbridge parish, and providing support for the many people affected in any way by difficulties brought about by COVID-19, Busbridge Church through its Outward Giving Group has always supported charities locally and further afield. Currently we support up to twelve national, international, and local charities, including the Warehouse Christian Trust which manages The Cellar café in Godalming (sadly closed at the moment and seeking new premises), the Chaplaincy at Send Prison, the Trinity Trust Team which helps to cater for the

spiritual and emotional welfare of young people, the environmental charity A Rocha, Tearfund, Open Doors, and Five Talents, which gives microloans to the poorest communities in East Africa and featured in a recent Radio 4 Sunday Morning appeal.

Under the auspices of Tearfund, all the toilets in the Old Rectory building and the one at Hambledon Church have been twinned with latrines in some of the poorest countries in the world.

Before lockdown was imposed in March we had planned to hold a Mission Sunday at which speakers from Open Doors would tell us about the amazing work the charity is doing to help and provide for the millions of Christians throughout the world who are persecuted simply for being Christians. Sadly these plans for special services had to be put on hold, but Open Doors continues its work in many different ways, notably providing for people in India who, because of their faith, are denied access to water, food aid, and financial help. Without the help of Open Doors partners, these people would starve.

If you would like to support this amazing work, please write to

church.office@bhcgodalming.org

for further details or visit the charity's website www.opendoorsuk.org

Shelagh Godwin (for the Outward Giving Group)



Donline
COMPUTER
CONSULTANCY



Donline offers professional computer engineering services to: Small Business, Home Office, & Home Users.

Donline can assist with all of your IT requirements: Supply & installation of hardware and software, upgrades, networking, system and data recovery, printing, security, cloud computing, technical support and training.

Call: Don Tocher, on 07870-643486 or 02392-989594 



Or contact Donline, online:
Web: www.donline.co.uk
Email: don@donline.co.uk

RB Carpentry & Joinery



Cabinetry,
Carpentry &
Joinery

Kitchen Fitting
General Property
Maintenance

40 years
experience

References
available

Busbridge based

Contact :
Rob Beasley
0797 7944162

Fed up with Ironing? Let the **Ironing Fairy** do it for you!



You are not alone!

Ironing is the most dreaded household chore. We regularly heard people wishing for a "ironing fairy" to take it off their hands, which is why we started our business.

Why choose us?

- ✓ Free collection & delivery
- ✓ Turnaround in 48 hours
- ✓ Professional service

We can work around you

Whether you require a regular weekly or 'on demand' ironing service.

 01483 428044  07809 401794

www.ironingfairy.net



R. & R. Roofing

Guildford

Roofing Contractor & General Builder



- NEW ROOFS & REPAIRS
- CHIMNEY POINTING & REBUILD
- SLATING • TILING
- HIGH PERFORMANCE TORCH-ON FELTS
- FLAT ROOFS • LEAD WORK
- GUTTERING • uPVC FASCIAS & SOFFITS
- EXTERIOR MAINTENANCE

FREE ESTIMATES EMERGENCY SERVICE

01932 344660

07956 554604

7 Rivermead Byfleet KT14 7BZ

Email: russ@rr-roofing.co.uk

J. Morris

Established for over 50 years.

LOGS THAT BURN. KINDLING THAT LIGHTS.

Hardwood logs for
open fires and log burners.
Collection & delivery 7 days a week.

COMPOSTS MULCHES GARDEN SUPPLIES

Load sizes from 1m³ to 7.5t.
Delivery 7 days a week.

www.logsthatburn.co.uk

07587 343 572 / 01483 423193

logsthatburn@gmail.com

Compton Nursery, The Street,
Compton, Guildford, Surrey GU3 1EJ

Honey Landscapes

Garden Maintenance and Construction



Patios & Drives • Hedges
Stonework & Brickwork
Fencing • Planting
Lawns large or small
Turving & Seeding

Tel: 07952915547

honeylandscapes@gmail.com



Busbridge Design & Build

www.busbridgedesignbuild.co.uk

07968 022526

Your local firm, specialising in high quality
new-builds, extensions, refurbishment and
all other aspects of building works

Offering exceptional levels of service &
attention to detail at competitive prices

Excellent local references and referrals

Contact us today for a quotation or
to discuss your requirements

A J Bennewith & Co

CHARTERED ACCOUNTANTS

We are an independent practice
that has been offering a personal
service for over 30 years

Contact us for all your
accounting needs, tax needs
and a free initial consultation

Registered Auditors
Personal Tax Returns
Companies & Charities

Tel: 01483 539 777
www.bennewith.co.uk



SMALL ADS

VERY LOCAL TOP QUALITY TWO YEAR OLD HARDWOOD LOGS FOR SALE. Felled & processed just a mile from centre of Busbridge. Pick-up load (1.2cm) £90, Dumpybag (0.8cm) £70 delivered to your drive. **andrew4logs@hotmail.co.uk** or call Andrew on: **01483 424934** or **07952 429071**

GARDENER TRAINED WITH THE RHS, HARD WORKING AND RELIABLE. Will undertake weeding, pruning, mulching and bed work plus more from £20 per hour and medium hedge cutting service priced per job. Contact Matthew on **01483 421547**

EASY CV GUIDE (including CV template) on how to write a great CV in 10 simple steps for only £9.99. We can also review your Easy CV for just £10 per page.
<https://www.itforinvestmentbanking.com/>

RZI GARDEN MAINTENANCE LTD

Local, friendly gardener offering:

- GRASS CUTTING
- GARDEN RUBBISH CLEARANCE
- PAVING SLAB CLEANING ...and very reasonable rates!
- HEDGE TRIMMING
- WOODEN FENCING & SHED REPAIRS

Call Barry on: **07760 689434**
or email: **barry.stone50@yahoo.co.uk**


MEMBER OF THE BRITISH SOCIETY OF FOOT HEALTH PROFESSIONALS


Heart & Sole
Karen Regan
Foot Health Professional

KAREN REGAN DipFHP MCFHP MAFHP
MOBILE FOOT HEALTH PROFESSIONAL
WWW.HEARTANDSOLE.SITE
07776309567


Vanessa Edwards Hypnotherapy
Cognitive Hypnotherapist
DipCHyp HPD NLPprac

www.vanessaedwardshypnotherapy.co.uk
info@vanessaedwardshypnotherapy.co.uk
07523101952


I specialise in helping women with anxiety, stress, confidence issues and weight loss. I also work with phobias, OCD, bad habits, smoking, depression and insomnia.
If your issue is not listed here please contact me.

Professional, confidential & sympathetic counselling

Gill Brennan

MBACP (Accred), FdA (Hons), BA (Hons)
07947 424 538
gillhbrennan@gmail.com
www.godalmingcounsellor.com





Printed by Linnerlake 07590 047750 (Text Only)
www.linnerlake.co.uk
linnerlake@gmail.com

We ask you to please make sure that those people who are the focus in photos have given their consent to be included in our publication & on our website; in the case of minors we ask that this is parental consent. "The Bridge" would like to thank advertisers for their support, but to make clear to readers that it does not offer any endorsement of the goods or services advertised. Views expressed in the articles are not necessarily those of the Editor or Busbridge Church. The Editorial Team reserve the right to edit any articles submitted for consideration for publication.

Advertising

SMALL ADS are designed to advertise local services.
£5 per insert, 40 words maximum.
For Sale items £2,
20 words maximum.

Please contact Jacky at:
jackybeale@hotmail.com

DISPLAY ADVERTISING is for businesses who wish to advertise in full, half, quarter or eighth page format. We deliver free of charge to over 1850 local homes. Please contact Cathy at:
editor.atthebridge@gmail.com

We reserve the right to decline advertising or payment for advertising at our discretion.

COPY DATE

NOV/DEC 2020 EDITION

WED 21ST OCTOBER

PUBLICATION DATE: FRIDAY 6TH NOV

EDITORIAL TEAM

Cathy Brook (Editor)	420633
Jacky Beale (Small Ads)	423768
Christine Payne	417320
Chris Sollars	Lorna Sherwin
Lesley Reeves (Treasurer) via email at:	bridgefunds@btinternet.com

Write to us:

c/o Church Office, The Old Rectory, Old Rectory Gardens, Godalming GU7 1XB.
St John the Baptist Church
Rector: Rev Simon Taylor
01483 421267

PC Doctor Godalming

Fixing computers of all shapes and sizes

If your computer is run down, unreliable and generally out of sorts then why not call for professional help and advice in your own home. All types of computer or network problems dealt with on a "No Fix No Fee" basis.



79 Pullman Lane, Godalming, GU7 1YB

Tel: 01483 424378 | 07876476990

email to: mike.lagan@pcdocgo.co.uk



Busbridge DJ

Music Producer
available for parties

www.mataz.co.uk

 theofficialmataz

 theofficialmataz

[youtube.com/c/MatazDJ](https://www.youtube.com/c/MatazDJ)



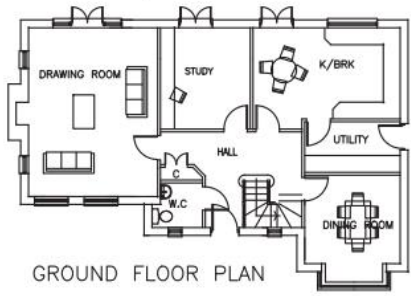
SURREY HOUNDS

BESPOKE DOG EXERCISE & CARE SERVICE

0771 2047295 / 0771 3841922
Surreyhounds@gmail.com
Surrey Hounds



FRONT ELEVATION



GROUND FLOOR PLAN

PLANNING & DESIGN SERVICE LLP

Architectural drawings for
Extensions, Alterations &
New Build

Free No Obligation Quotations

Tel: 01483 417555
Mob: 07818 014357

www.architecturesurrey.co.uk
simonplanning.design@btinternet.com



calico

Open Mon—Sat

13, High Street, Godalming
Curtains - Blinds - Fitting Service



01483 421990



calico-curtains@hotmail.com
www.calico-curtains.co.uk

