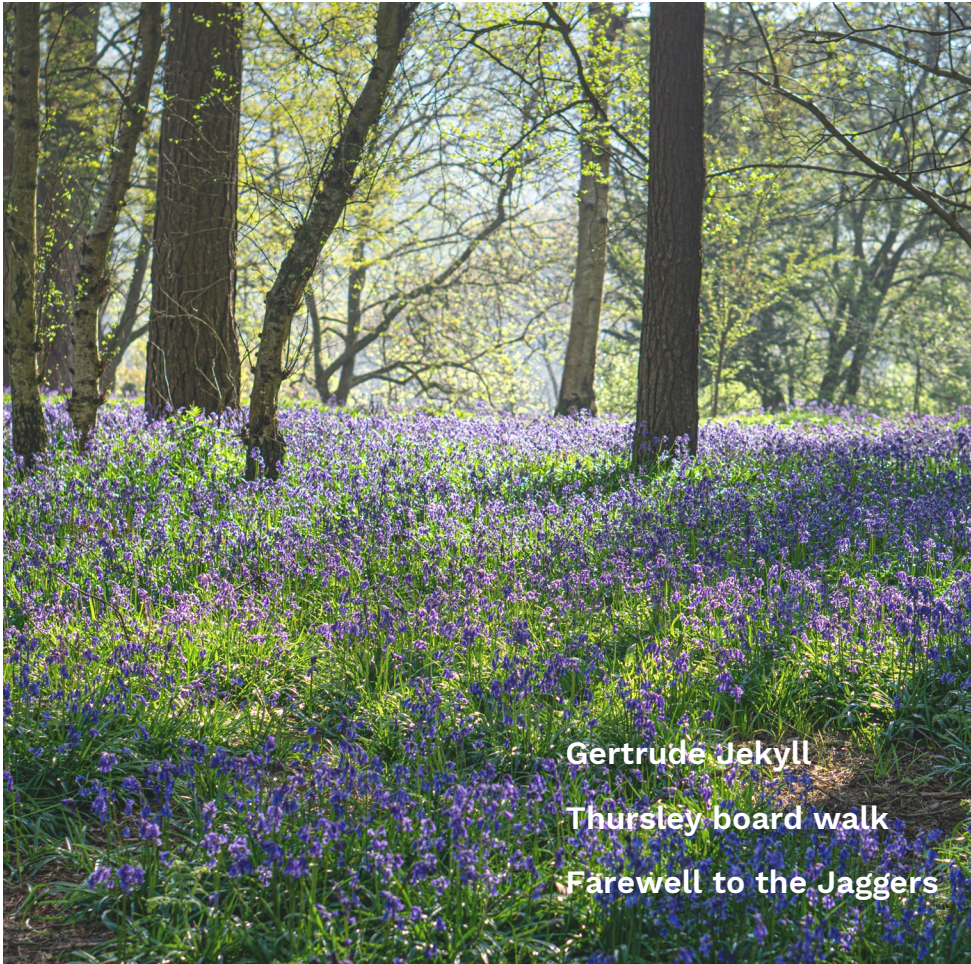


The **Bridge**

MAY & JUNE 2023



Gertrude Jekyll
Thursley board walk
Farewell to the Jagers

www.bhcgodalming.org/thebridge

PRIOR'S FIELD

The place to achieve



GSA Girls' Boarding and Day School 11-18, Godalming Surrey

Prior's Field is a school where the spirit is creative and enterprising - it champions girls' individual talents.

Good Schools Guide

Achievement in all its forms is alive and kicking in every part of their school day.

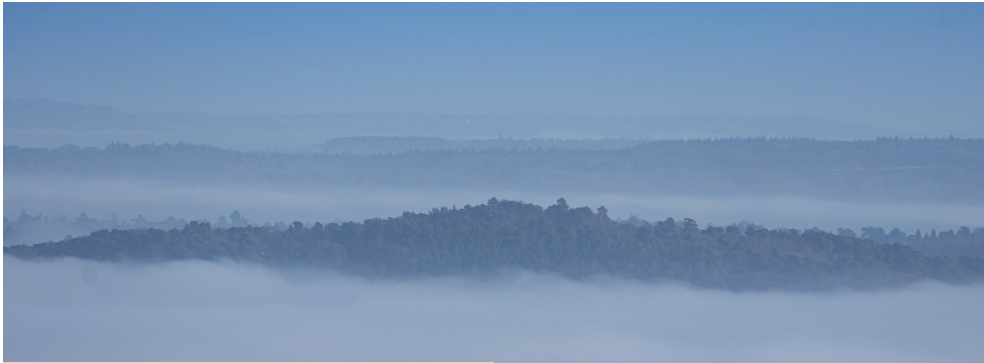
Tatler Schools Guide



PRIOR'S FIELD - THE PLACE TO ACHIEVE

Visit our website or contact our Admissions team to book your place at our next Open Day on
Saturday 16 September 10.00am - 12.30pm
01483 810551 www.priorsfieldschool.com

Registered Charity No. 312038



FROM THE EDITOR

In this edition we follow up on the Busbridge History walk with an article on Gertrude Jekyll, by local artist Katy Bennett. For our walk we visit the re-opened board walk at Thursley common.

We also say farewell to local legends Chris and Maggie Jagger as they move to the Isle of Wight.

Thanks as always for your support and feedback - we hope you enjoy this edition.

David Brockman

Copy date for next edition is June 14th

editor.atthebridge@gmail.com



Contents

- 4 Gertrude Jekyll
- 8 Infant school news
- 10 Ukraine update
- 14 Britten's café - review
- 16 Book review: Clara and Olivia
- 17 Walk on Thursley common
- 20 Church calendar
- 21 A word from Rev Simon Taylor
- 22 Farewell to the Jagers
- 28 Prime Time
- 31 Nexus News
- 37 Godalming Museum

Front cover: Bluebells at Winkworth by David Brockman

This Page (top): Hydons Ball from Gibbet Hill during a temperature inversion

Gertrude Jekyll - a local legend of garden artistry

Ask any primary schooler in Busbridge about Jack Phillips and you will hopefully get a vaguely coherent response about telegrams, the Titanic, and perhaps even that his memorial is across town. Yet many Busbridge residents probably aren't aware of the memorial for another famous 20th Century resident, right on our doorstep in the churchyard of Busbridge Church.

Perhaps you paused to admire the Grade II-listed structure whilst on the Busbridge History Walk (March/April edition), or you walk past it on the school run between Busbridge Infant and Junior schools, or when making your way on the path to the Rectory or Yew Tree cafe?

It celebrates the life of Gertrude Jekyll (1843-1932), an extraordinary artist, gardener, writer and businesswoman, winner of the RHS Victoria Medal of Honour, and one of the most influential Arts & Crafts people of the 20th century. As a single woman building a career in misogynist Edwardian England, she achieved a remarkable level of success and fame during her lifetime.

Edwin Lutyens, renowned architect friend and collaborator, designed the memorial for Gertrude and her brother, Herbert, a close friend of Robert Louis Stevenson who used his surname in the titular *The Strange Case of Dr Jekyll and Mr Hyde*, as well as for Herbert's wife Agnes.

Gertrude's garden and Lutyens-designed house, Munstead Wood, lies a few hundred yards away and is considered by historians to be one of the most famous gardens in England. It made the reputation of the younger Lutyens and led to high demand for Jekyll's gardens from all over the world. She worked on more than 400 of them in her lifetime, including Hatchlands, Knebworth, Hestercombe, and the Phillip's Memorial garden. Yet,

gardening was in fact her second career, embarked on from middle-age onwards.

A closer look at Gertrude's gravestone in Busbridge church graveyard reveals Lutyens's dedication:

ARTIST
CRAFTSWOMAN
GARDENER



We are reminded that she trained first as an artist and was much admired by others in the Art & Crafts Movement for her numerous artisan craft skills and interior design. Aged 47, she was diagnosed with severe and progressive myopia. With failing eyesight, she focused her brilliant, practical mind on horticulture, bringing to bear her painting experience and art theory. Her garden design process became analogous to working up a piece of art, both in preparation and execution. She wrote, *'A canvass on which a gardener paints, already more or less complete in his mind, using for his pigments the plants that best suit his*

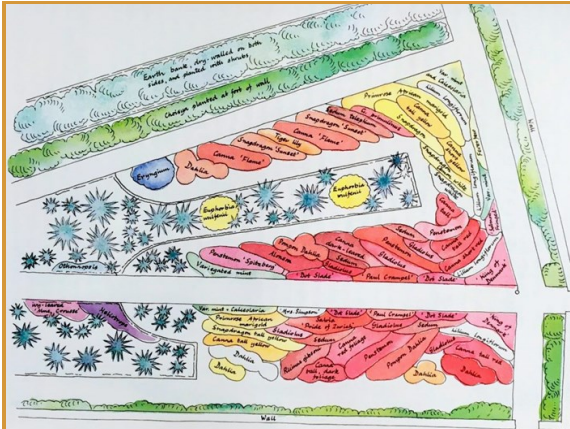


Illustration taken from Gertrude Jekyll's *Colour Schemes for the Flower Garden* (1908), demonstrating a typical warm and cool colour scheme and her "drift" planting approach.

purpose.' (Gertrude Jekyll, *Colour Schemes for the Flower Garden*, 1908)

At art school, the Principal, Richard Redgrave (RA), wrote a book on emerging colour theory, *An Elementary Manual of Colour* (1853), which Gertrude was expected to study. Her garden designs have recurrent hot and cool colour themes, such as the contrast of blue flowers and grey foliage with vivid reds and oranges. Gertrude went on to write her own specialist text, *Colour Schemes for the Flower Garden* (1908), in which she tackles how to plan for seasonal change: 'To plant and maintain a flower border with a good scheme for colour, is by no means the easy thing that is commonly supposed.' Gertrude was further immersed in ideas on colour harmony through her friendship with Ruskin, who advised her to study JMW Turner's watercolour paintings,

paying particular attention to his sensitive use of colour. Gertrude assiduously copied Turner's paintings, one of which hangs in the Godalming museum. Turner's use of blue and yellow to create a sense of transient light became one of her recurring tropes, with blue irises one of her favourite flowers. It seems that her general love of colour and appreciation of the Impressionists, coupled with declining eyesight from her forties onwards, led to striving for great splashes of colour in her "drift" planting arrangements.

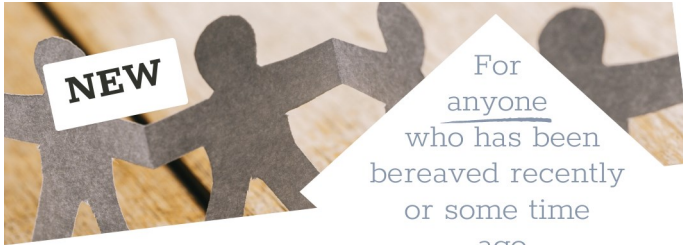
History does not usually celebrate women. Female artists take up only 7% of space in top UK galleries. Godalming celebrates many previous residents, but they are predominantly male. If you haven't yet had the opportunity, the Godalming Museum displays her beautiful artwork, copies of garden designs (museums in the USA have the originals!) and her plant nursery notebooks. You can also see the original embroidered banner Gertrude created for the Suffragist Women's

Rights march in Godalming (alongside Mary Watts). The gardens at Munstead Wood can be visited by appointment. You could also take a moment to remember her wonderful creative legacy when you're next in the churchyard - the hardy bergenias planted in the memorial itself were one of her favourite 'background' plants!



Iris Stylosa, watercolour by Gertrude Jekyll (Munstead, 1882) (Godalming Museum Collection)

Katy Bennett



busbridge&hambledonchurch

A safe space where:

- you can feel safe to talk about how the pain of bereavement is affecting you
- you will meet others who have experienced their own loss
- there is a team willing to offer support by listening
- you will find mutual support and encouragement

The BEREAVEMENT CAFÉ



MONTHLY IN BUSBRIDGE OLD RECTORY

2.30-4 PM
LAST
TUESDAYS
OF THE
MONTH

NO CHARGE
& you will be
offered a cup of
tea/coffee
and cake.



The Bereavement Café is run by the BHC Pastoral Care Team.

The Bereavement Café does not provide counselling, but signposting can be offered if appropriate.

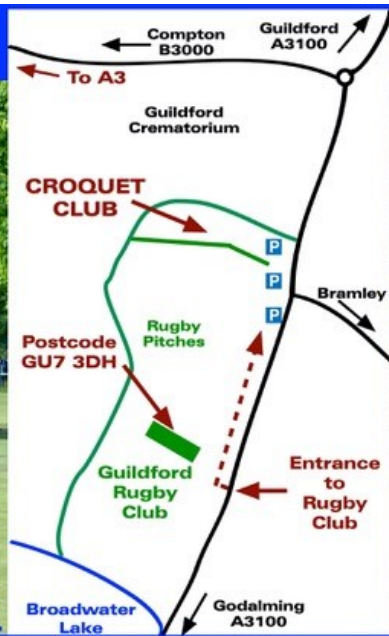
There is no charge or need to register to attend the Bereavement Café, you are welcome to show up.

If you would like to chat to someone about The Bereavement Café, please contact: Shân Hallam
e: pastoral@bhcgodalming.org /
t: 01483 421267
www.bhcgodalming.org/pastoral-care

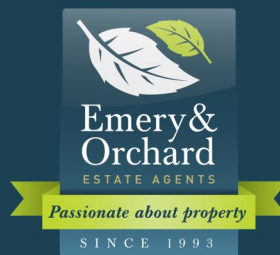
**National Croquet Day
Sunday 14th May**

Guildford & Godalming Croquet Club invite you to try out this fun and fascinating sport. Suitable for young and old and for social or competitive players. Accompanied children aged 10+ welcome. Come any time between 2pm and 5pm.

It's free, equipment provided, but please wear flat-soled shoes (e.g. trainers). Warm welcome promised.



Visit: www.guildfordandgodalmingcroquetclub.co.uk



EMERY & ORCHARD

Godalming's **Local Independent Agent**
Established for over **25 years.**

Property to sell in Godalming
or the Villages?

Then contact Tony Emery
or Jeremy Orchard on
01483 419 300
to arrange a
Free Market
Valuation.

20 High Street
Godalming
GU7 1EB
www.emery-orchard.co.uk



Through the World of Woodland Schools at Busbridge Infant School

Busbridge Infant School is member of the South Farnham Educational Trust, a Multi Academy Trust where all children are at the centre of its vision in 'the continual pursuit of excellence'.



The key values of respect, collaboration, resilience and creativity are the driving principles of the high quality learning which all children experience at this wonderful school. A graffiti artist helped us to create this feature wall.



These values run through Woodland school learning which is an important part of the school day for many children at Busbridge Infant School.



A secure pond provides tranquillity and a home to many species of wildlife. Birds, beetles and bugs busy themselves trying to avoid the patter of children's footsteps who are waiting to spot them and prove that stings, wings and wriggly things are exciting for eager eyes!



Pond dipping

Here we are pond dipping, being creative and solving a challenge and even toasting our bread over an open fire – proving that learning this way really is amazing!

We are so looking forward to the warmer weather, when we can enjoy this space even more and see what surprises await us.

Recently we celebrated Science week and listened to the talents of our parents in our community talk about their careers in the world of Science, Technology, Engineering and Mathematics known as STEM to us!

The school's library has undergone a transformation with children's reading books matched to an approved phonics scheme; poetry, fiction and non-fiction books clearly



Toasting bread



Building a bridge with leaves

labelled and promoting interesting themes such as the environment, famous people from a range of cultural backgrounds, diversity, feelings and many more. We all enjoyed going to church for our Easter Service. All the children had their chance to shine - Reception sang a song, Year 1 and 2 read poems and there were even a couple of songs from the Singing Club choir.

For further information see <https://www.busbridge-infants.org>.

Darren Heatley



School library



Easter service

Christian Aid Week 14 to 20 May 2023: Help Dreams Come True

Christian Aid Week brings people together as one community helping those living in poverty to transform their own lives.

Soaring costs of food, fertiliser and school fees are affecting people in Malawi and around the world. Hard-working farmers are seeing their harvests fail as the climate crisis brings increasingly erratic weather.



Jen needs help to buy better seeds, secure a fairer price for her crops and build a happier future for her children

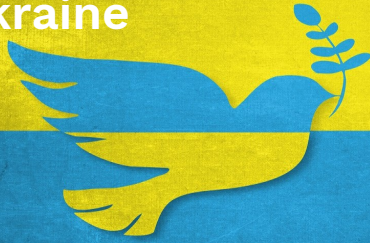
To make matters worse Malawi was hit by cyclone Freddy on 12th March. There were many casualties and damage to infrastructure. This Christian Aid Week, you can be one of the hundreds of thousands of CA supporters who give, act and pray – stepping out in

love for our global neighbours. Together, we hope to restore justice to our world, and protect the future for our children and grandchildren. Donations can be made at [christianaid.org/appeals](https://envelope.christianaid.org.uk/godalming-district-christian-aid) or **use the Christian Aid e-Envelope at <https://envelope.christianaid.org.uk/godalming-district-christian-aid>** or scan the QR Code:

Together, we can turn hunger into hope.



Ukraine



Many of the Ukrainian people living in and around Godalming follow the Eastern Orthodox church who celebrate Christmas and Easter according to the Julian calendar. This year, Orthodox Easter fell on 16 April and around 30 Ukrainians shared their celebration with us at Busbridge Church.



As in the western Church, eggs are a symbol of Easter and of new life. At the Easter Garden service and Great Easter Egg Hunt on (western) Holy Saturday (between Good Friday and Easter Sunday), eggs

Our Ukrainian friends some in traditional Ukrainian clothing, looking forward to breaking their Easter fast.

which had been “blown” were decorated. Eggs are often painted red to symbolise the blood of Christ shed on Good Friday.



The most important prayers are held in the early hours of Easter Sunday when celebrations of the resurrection begin with church bells and fireworks. In Ukraine, the fast is broken with a traditional Pashka Easter cake (a little like a panettone). At Busbridge, celebrations continued with a blessing on the Lent baskets which had been decorated and filled with goodies, including the Pashka and a candle to remind us that Jesus is the light of the world and we went from the darkness of Good Friday into the light of Easter Day.

It was truly wonderful to hear about and share in this tradition with our Ukrainian friends.

Sarah Black

Some of the goodie laden Lent baskets brought for a blessing



**BELIEVE.
ACHIEVE.
SUCCEED.**



St Catherine's, Bramley

GSA Day & Boarding School since 1885 | 4 - 18 years | Guildford GU5 0DF

You want your daughter to achieve academically but you want her to be intelligent in other ways too – to be confident socially, to have a strong moral compass, to shape the world around her, to believe in herself.

At St Catherine's we support your daughter in building the intellect and character that will help her develop as a bright, confident, compassionate and vibrant individual. At the heart of this is developing her sense of self-belief, that she can achieve whatever she is driven to do in life.

OPEN EVENTS

Wednesday 10th May 2023

Friday 23rd June 2023

Thursday 21st September 2023

01483 899609

admissions@stcatherines.info

www.stcatherines.info



Busbridge Parish Register

Baptisms

26th February – Ella Annabel Jane Hickey and Ned Robert Peter Hickey

12th March – Valentine Michael Harwar

16th April – Emiel Gleichmann-Hopwood and Zadie Hickson-Lovence Bowling

Funerals

18th April – Yvonne Ena Wright (at Guildford Crematorium)



Appliance Service and Sales

- Repair of most main makes
- Built-in and Freestanding
- New appliances with installation
- * Built in and American F/F

Checkatrade.com
Where reputation matters

**Cooker/Oven
Dishwasher
Washing Machine
Tumble Dryer
Fridge/Freezer ***

Elstead (01252) 705198

www.applianceexpert.co.uk



Printed by **LINNERLAKE**

LITHO & DIGITAL PRINTERS

Established family business, based in Guildford with free delivery to Godalming. Leaflets, posters, booklets, order of services, wire bound books & more

www.linnerlake.co.uk

07590 047750

linnerlake@gmail.com

Paul Clifford
Property Services
Qualified "Part P" Electrician
B-tec Trained Plumber
Electrical, Fuse Boards
Extra Sockets, LED Lighting

Fully Insured References Available

Paulclifford60@gmail.com 07889 073853

QUARRY HILL STORES

17 Quarry Hill



Paper Boys and Girls Required in Busbridge

Newspaper Delivery Service in Busbridge

Contact: Mr S. Patel

Tel: 01483 416938



Godalming Children's Choir For School Years 3 – 6

Do you enjoy singing and would like to sing with others who do? Keen young vocalists have a great opportunity to learn singing in harmony with professional leaders Sam, Oli and Martina, and Godalming Choral Society volunteers.

Tuesdays 5-6pm during term-time at Godalming United Church.

First taster session is free – come and give it a go.

email gcc@godalmingchoral.org.uk



www.samaritans.org

You can call them free on 116 123 or
email jo@samaritans.org

Whoever you are and whatever you're facing, they won't judge you or tell you what to do. They're here to listen so you don't have to face it alone.

When life is difficult, Samaritans are here – day or night, 365 days a year

Open the book

We are looking for people who can spare an hour a month on a Monday afternoon, to be part of a local infant school assembly.



A small group meet each month. This would require a small acting role of a bible story with words and costume, both of which are provided.

Please contact Catherine Lawton
catherine@lawtonfamily.net
07973927233

Hugh Tanton GARDEN DESIGN

Garden Design & Landscaping Solutions
From a Qualified Professional

Garden Design
Border Rejuvenation
Planting Plans
Solutions to Problem Areas
Planting and Landscaping
Friendly Advice and New Ideas

T: 01403 713 714 M: 07502 277 911

E: enquiries@hughtantongardendesign.co.uk

To find out more please visit

HughTantonGardenDesign.co.uk



H.D Brooks & Sons Painters & Decorators

- Trusted, Rated and Reliable
- All aspects of interior and exterior painting and decorating undertaken
- High end spray finishing
 - UPVC Spraying
 - Dustless Sanding

Proud members of

Checkatrade.com

Where reputation matters

Rated 9.96 as of 2022

Contact us for a free quote or advice

07557 342518

info@hdbrooksandsons.co.uk
www.hdbrooks.co.uk

Britten's – Café and Restaurant

Britten's is situated just off Godalming High Street in Angel Court. It is owned by Daniel Britten, who has spent many years in catering and has been a contestant on Masterchef.

A friend and I went for a coffee and hot chocolate (highly recommended!) and were greeted by very friendly and smiley staff. The ingredients for the food are locally sourced and the menu consists of breakfast, brunch and pastries and you



Britten's — OF — GODALMING

can also book a table for supper on Friday and Saturday nights.

It's welcoming, dog friendly, airy and warm inside, with plenty of tables

upstairs and downstairs. There are also tables outside with blankets on the chairs to keep you warm.

We spent a lovely hour whiling away the time, chatting and watching a steady stream of people flow in and out, enjoying the food, drink and good service. I'm already looking forward to my next visit.

Lorna Sherwin



THE ITALIAN JOB

Allegri, Monteverdi,
Pergolesi, Gabrieli and
Handel: *Dixit Dominus*

Vivace
Chorus

Sat 20 May
7.30pm

Holy Trinity Guildford

MULLARD

FUNERALS GODALMING SINCE 1857

INDEPENDENT FUNERAL DIRECTORS
& MEMORIAL MASONS

- 24 Hour professional & personal service
- Pre paid & pre arranged funerals
- Private chapels of rest

01483 860279 • www.mullards.uk

121-123 High Street, Godalming
Surrey, GU7 1AG



Busbridge Wildlife Watch



Tree creeper spotted by Chris Payne



JOIN US ON OUR OPEN DAY
5TH MAY 2023
9:30AM - 12PM

 **ISI** Independent Schools Inspectorate
Pupil achievement: Excellent
Pastoral Care: Excellent



LONGACRE SCHOOL

A THRIVING CO-EDUCATIONAL PREPARATORY
SCHOOL FOR BOYS AND GIRLS AGES 2 - 11 YEARS

WHERE HAPPY HEARTS
GO ALL THE WAY

Contact our registrar or visit our website to register your place at our open day, or to book your one-to-one tour with Headmaster Matthew Bryan

01483 893225

admissions@longacreschool.co.uk • www.longacreschool.co.uk

Hullbrook Lane • Shamley Green • Guildford • Surrey • GU5 0NQ

Book Review: “Clara and Olivia” by Lucy Ashe

Jane Lambert reviews a book by former Godalming resident Lucy Ashe

You do not need any knowledge or particular interest in ballet to find this book an exciting and thought-provoking read. If you have ever wondered what it takes to be a professional ballet dancer or mused over the complexity of staging a production, it will however give an extra dimension. Set in London in 1933, this is a carefully crafted interaction of historical facts and a page-turning thriller which will appeal to a wide audience. Ballet lovers will revel in the detail of rehearsals and the glamour of performing *Coppélia* at Sadlers Wells. The intricacies of producing custom made pointe shoes will appeal to fashion designers. The twists and turns of the plot will keep everyone in suspense until the very end and are enough to induce occasional nightmares, if you stop your bedtime reading in the wrong place. For anyone interested in observing how personalities

mature, obsessions develop and people relate to each other, this is a treasure trove. The characters, carefully created to be credible and well developed, are seen from differing points of view as the plot thickens. The focus is on the



relationships between the women, drawn out by interactions with each other and with the men in the story. At a deeper level it questions whether we can substitute love with beauty, art and fame.

The author, herself brought up in Godalming, and known to many of us during her childhood years, describes this as “a story of new beginnings, twin sisters, learning their strength”. As a twin herself, and having spent years training to be a ballet dancer, including dancing scenes from that ballet, she has plenty of personal experience to draw upon. This deep knowledge of her subject matter is self-evident despite her assertion that her main characters are entirely fictional creations.

I highly recommend this as an absorbing and thought-provoking read.

Jane Lambert



Author Lucy Ashe

Walk with The Bridge: Thursley Common

Gemma Taylor visits Thursley Common Nature Reserve, one of the largest (326 hectares) and most important areas of heathland in Surrey containing marsh, woodland and lowland heath

I hadn't been there since September 2018, when my youngest (now 6) was a toddling 18-months and we delighted in spotting numerous dragonflies and were even lucky enough to encounter a common lizard!

Of course, my last visit had been before the awful wildfire in May 2020, which destroyed 20 hectares; or, to put in a more visually understandable way, nearly 50 football pitches of the reserve ravaged. Having heard that the much-loved boardwalk had been rebuilt (completed end of 2022), we decided to head that way one Saturday afternoon and were reminded just what a delight Thursley Common is.

It was staggeringly sad to see, even now after almost 3 years, just how sparse the heathland is. Yet despite the awful devastation, the landscape with its burnt scars is just as beautiful and it's fascinating to see how nature is making a remarkable comeback – the bright new greens juxtaposed against the blackened bark – so that even on an overcast day, the vast common is wonderful place to meander.

What is also really great about



Thursley Common, is that a walk can be tailored to almost any and everyone's abilities with so many paths to explore. Now that my children are 6, 8 and 10 years old, we went on a more challenging walk (5.13km) with some inclines along sandy paths and with a pub and a playground to reward all our efforts! However, if you have children with smaller legs or still in a buggy; or you are older and not able to walk as far, or have a wheelchair, then simply stick to the boardwalk for a nice, flat gratifying 35-minute loop walk (about 2 km).

The 5km route we did (*not suitable for buggies or wheelchairs*) is as follows (see map on page 19)

1. We started off at the Moat Pond Car Park (postcode for Sat Nav: GU8 6LW) and walked to the left of the

pond. Keep walking around to the right, then turn left onto the boardwalk.

2. Instead of doing the full loop of the boardwalk, we veered off at the first right turn (after about 5-10 minutes walking) which becomes a sandy path as boardwalk ends. Continue along this footpath through gorse and sparse woodland, where it becomes boardwalk again, with a nice lookout tributary, which the kids love!

3. When the boardwalk ends, at the junction, turn left along the sandy Heath Trail, further into the reserve. Follow this path until you reach a fork in the path (next to a damaged tree trunk), turn right here up a slight incline to the ridge. There is a bench at the top where it evens out; good place to pause and appreciate the 360° vista of the reserve and surrounding hills in the distance.

4. Continue going straight along as it becomes a slight up and down rollercoaster of a path.

5. Stay left when you reach the point where the path joins with another coming from the right and continue uphill along the bridleway.

6. You will reach not one but two bridleway cross-roads quite close together along this section – go straight over both. This section of path has slightly steeper inclines than before but it does again reward, with



nice 360° views of the reserve when it evens out at the top.

7. At the next fork, stay left along bridleway (also signed Cycle Surrey Hills) and keep going straight.

8. You will cross over another bridleway but then turn right at the next junction, along the bridleway adjacent with house and garden on right. The path moves into woodland as you near Dyehouse Road.

9. When you reach the road, you should see The Three Horseshoes pub on the opposite side, on the right. Carefully cross over.

10. Enjoy your pit stop with a pint/soft



drink and packet of crisps (advised, but not compulsory!). When ready, turn left out of the pub and walk on the path on opposite side of the road, past Thursley village hall. There are other bridleway paths on your right to take you back into the reserve more quickly but we kept going to reach Thursley playground (named Thor's Den!) to let the children have a play. My children gave it a 10/10 – overheard cries of "This is epic!" and "I'm so happy!"

11. Setting off again, there is a path to the right (that goes behind the park) which would, again, take you more quickly back into the reserve but we opted for the path furthest to the left of the playground, which runs more

parallel with Thursley Road and is a more direct route through woodland back to the car park.

12. This path is again a slight

rollercoaster of a path with initial descent and then mild inclines. After about 10 minutes walking, keep to the left but go straight across another path and head up the slight incline.

13. Keep going straight. Before reaching the heathland again, you will see many paths converging, keep left as you head forwards to re-join the sandy heath path.

14. You will go across a brideway junction (yes another!) and keep going straight until you notice the end of the boardwalk on your right and then turn left, into the woodland which surrounds the Moat Pond.

15. When you reach the pond, you have a choice to go left or right to get back to the car park. The left path is more direct but runs slightly closer to the road and is prone to being boggy, so stick to going right around the pond for an easier, potentially less boggy route!




Gemma Taylor



BUSBRIDGE CHURCH SUNDAY SERVICES

9.30

CONTEMPORARY

BAND LED WORSHIP + CHILDREN'S GROUPS
HOLY COMMUNION 3RD SUNDAYS
REPLACED BY MUDDY CHURCH  ON 1ST SUNDAYS

COFFEE TOGETHER

11.15

CLASSIC

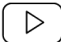

COMMON WORSHIP WITH HYMNS
HOLY COMMUNION 1ST SUNDAYS

18:00

EVENING

1ST, 2ND & 4TH SUNDAYS

EXTENDED TIME FOR WORSHIP & PRAYER
WITH YOUTH ON 1ST SUNDAYS
HOLY COMMUNION 4TH SUNDAYS

 You can watch these services live and on demand on YouTube  [BHCGodalmingonline](https://www.bhcgodalmingonline.com).

MAY-JULY SPECIAL DATES

SUNDAY 7 MAY 10AM CLASSIC CORONATION SERVICE
FOLLOWED BY THE BIG CHURCH BRING & SHARE BRUNCH IN THE OLD RECTORY GARDEN
SUNDAY 21 MAY 9:30AM ANNUAL PAROCHIAL CHURCH MEETING (NO 11:15 SERVICE)
SUNDAY 28 MAY 10AM MINSTERWIDE PENTECOST SERVICE @ ST PETER & ST PAUL'S CHURCH
(NO MORNING SERVICES AT BUSBRIDGE CHURCH)
SUNDAY 23 JULY -27 AUG MORNING SERVICES ARE COMBINED AT 10AM

PLEASE KEEP AN EYE ON THE NOTICES WHICH CAN BE FOUND ON THE WEB SITE:



WWW.BHCGODALMING.ORG/NOTICES

OR CONTACT VIC.HICKS@BHCGODALMING.ORG TO SUSCRIBE TO EMAIL.

WE LOOK FORWARD TO SEEING YOU!

[busbridge&hambledonchurch](https://www.busbridge&hambledonchurch.org) 

   
Follow BHC Godalming



Crèche



CHILDREN'S GROUPS FOR 0-11S:

Crèche, Tiny tigers, Ark & Explorers take place in the Old Rectory and Busbridge Village Hall during the Contemporary Service. Check the web site or ask a Welcomer for directions!

9.30 MUDDY CHURCH

OUTDOOR CONTEMPORARY SERVICE
FOR AGES 0-100
on 1ST SUNDAYS OF THE MONTH



To find Muddy, you can use the what3words location app. Download the /// app.

7 MAY CORONATION SPECIAL!
HOLLOWAY HILL RECREATION GROUND
- BEHIND TENNIS COURTS
GU7 1QD ///trap.stop.rated
3 JUN
JACK PHILIPS MEMORIAL
GU7 1ES /// blaze.outfit.swept
2 JUL
HOLLOWAY HILL RECREATION GROUND
- BEHIND TENNIS COURTS
GU7 1QD ///trap.stop.rated

A Word from Rev Simon Taylor

What do the following all have in common?

PayPal, Deloitte, Adobe, Brewdog, Buffer, Vistaprint, Church of England

All tech companies? No. Brewdog is a brewery. All created since 1845 (when Deloitte was founded)?

No, the Church of England has been around for a very long time!

So what's the connection? Answer: They all invest in their people's wellbeing through providing sabbaticals. The word sabbatical comes from the Latin for Sabbath – the Lord's day of rest. The first reference to the word sabbatical in the UK was in the 1590s!

There's something special about the idea of a time of rest. We've lost that art and I don't see that it is doing people much good. In many people's eyes who I meet I don't see rest, but exhaustion.

The Bible says that there should be a rest period every seventh day and every seventh year because this is God's best pattern for us. A field should be left fallow to recover on the seventh year. If a time of rest is good enough for a field and God's creation order, then it is a good model for us. That's why churches have historically gathered people every seventh day.

If you feel exhausted or over-stretched, can I invite you to consider what your sabbath pattern could look like? Is Sunday just another day? If you've fallen out of the pattern of church on Sunday, please consider the benefits of what it releases in your spirit.

What does a vicar do on a three-month sabbatical? Mine is a diverse undertaking. I'm going to Barcelona to look at a cave where Ignatius of Loyola pondered the meaning of life. He formed a Rule of Life shaped on Christian faith which might stand many of us in good stead in the midst of an increasing fractured and World and communities:

- **More** – seek to do things well
- **With** – to be alongside others
- **Cura Personalis** – respect for all, even in disagreement
- **Heartbeat** – of heart, mind and soul together
- **Ad Majorem Dei Gloria** – God matters
- **Ethic** – living well

I think these are central to good patterns of living. I'll be returning with some thoughts on what this might look like to benefit us in Busbridge.

I'll also be taking some time to walk part of the South West Coastal Path to follow in the footsteps of Raynor Winn's book 'Salt Path'. I'll be visiting my favourite retreat centre, the Roman Catholic community of Chemin Neuf in Storrington, West Sussex, which I visit twice a year.

The church is in great hands with many fabulous volunteers and a brilliant staff team. We've got a very able team of vicars here, so all the usual vicar things of both joy and sorrow will continue uninterrupted.

If you see me around, please do say "hi".

Simon Taylor



Farewell to Chris and Maggie Jagger

On Easter Sunday at Busbridge Church we said farewell to Chris and Maggie Jagger as they move to the Isle of Wight

In our March/ April edition, we included an article by Milo Wilson on the departure of Chris and Maggie Jagger from Busbridge, from the perspective of the Busbridge Tennis Association.

On Easter Sunday the morning service at Busbridge church included a farewell to Chris and Maggie who have been church members for nearly 50 years. They were presented with a book by Rev Andy Spencer in which church members had written their messages of thanks and appreciation for their friendship and for all they have contributed to the church and community in their time here.

Many will have known Chris in his role as a GP, but he and Maggie have also been involved in an array of other projects and activities (many of which they have initiated) inspired by their Christian faith and a desire to serve the local community and further afield.



Rev Andy Spencer presents leaving gift to Chris and Maggie

These include:

- Under the umbrella of **The Christian Warehouse Trust** (which Chris founded, chaired and will remain a trustee):
 - ◇ **Skillway** – the educational workshop in Deanery Rd, Godalming, which this year celebrates 25 years of providing disaffected young people an escape from the classroom to learn practical skills;
 - ◇ **The Cellar Camino Café** – Chris was among the pioneers of this café for the vulnerable and those in need which opened over 40 years ago in Crown Court and moved to The Bury in 2021;
- **SALCET** (The Salvadorian Children's Earthquake Fund) – established by Chris and Maggie following academic work Chris had done on natural disasters and relief efforts. It has operated in El Salvador, Uganda and Kenya (see *March / April 2021 edition of The Bridge*);
 - **WOW** (Women on Wednesdays) – A meeting for women of all ages which Maggie was at the heart of;
 - **Road Stewards** – Maggie organised these for many years (the wonderful network which delivers *The Bridge*!);
 - **Hambledon Youth Fellowship** – Chris and Maggie were core members of this group in the 1970s;
 - **Electoral Roll Officer.** Maggie managed the Busbridge Church electoral roll for more than 7 years;

- **Help with other churches** – help has been provided with services at St Marks, Godalming Baptist Church and Chiddingfold Baptist Church;
- **Careline** – this was a telephone service set up by the Jaggers and manned by Maggie;
- **Busbridge Tennis Association and Busbridge Boating Club** – See p23 and the March / April 2023 edition of The Bridge.

After the service we enjoyed cake made specially for the occasion and a glass of bubbly. We are so grateful for the many contributions Chris and Maggie have made to the community. They will be greatly missed, but our loss is the Isle of Wight's gain.

David Brockman



Chris and Maggie serving cake

Around 90 members and friends of Busbridge Tennis Association (BTA) attended a farewell event on 25th March at Inn on the Lake to thank Maggie and Chris Jagger for their huge contribution to BTA's success over the past 15 years. As a token of members' thanks and appreciation Maggie and Chris were presented with a specially commissioned picture of the Holloway Hill recreation ground & Tennis Courts (see below) painted by local artist Stephen Kinder and also with a cartoon montage depicting their huge contribution to many organisations in Godalming over the past 50 years. We wish them well and lots of fun tennis as they move to the Isle of Wight.

David Burndred



Things to get involved with this spring at

GODALMING LAWN TENNIS CLUB...



LTA YOUTH START

6 week course £29.99
Starting 5th May 4-4:45pm
For children aged 5-8
Includes racket, t-shirt & balls

TENNIS XPRESS FOR ADULTS

4 week course £39.99
Starting 5th May
20% off membership



www.godalmingtennis.org info@godalmingtennis.org



Swedish deep tissue
massage - Facials -
Pedicure - Manicure -
Waxing - Tinting etc.

ANNA'S



Beauty & Massage



IHBC Independent
Beauty Consultant and
Masseuse
44 Peperharow Road,
Godalming
Surrey
GU7 2PL
07984 543 431



BEVAN WILSON Physiotherapy & Sports Injury Clinics

Highly-regarded clinics in Guildford Boxgrove GU1, Godalming and Wonersh, providing professional treatment and specialist advice to help you achieve your goals....

- Physiotherapy & Rehabilitation
- Spinal & Joint Pain, Stiffness
- Pilates & Women's Health
- Post-operative Rehabilitation
- Flexibility, Mobility & Balance
- Children & Adolescents
- Sports Injuries & Massage
- Orthotics & Joint Bracing
- Acupuncture & Electrotherapy
- Working Health & Posture
- Neurological Rehabilitation
- Home & Care Home Visits

01483 424505
info@bevanwilson.co.uk
www.bevanwilson.co.uk

"The care, knowledge and experience is exceptional, and they always go above and beyond."



GETTING YOU BETTER TOGETHER FOR 25 YEARS!



St Hilary's

Preparatory School, Godalming

Get in touch to arrange your personal tour
admissions@sthilarysschool.com



www.sthilarysschool.com



Are you looking for summer holiday provision for your 2-11 year old?



Bee Active Camp



Monday 24 July to Friday 12 August 2023, 8.45am - 4.00pm

Book via www.bookwhen.com/sthilarys

GREAT COFFEE & CAKE SERVED WITH LOVE NOT FOR PROFIT FOR CHURCH & COMMUNITY



SUMMERTIME SALADS
NOW BACK ON THE MENU!



MON-FRI
TERM TIME
8.30 AM - 4 PM
SCHOOL HOLIDAYS
10 AM - 4 PM

SATURDAYS
10 AM - 2 PM
SUNDAYS
CLOSED

@yewtreecafebusbridge



Fully Insured

Fully Qualified

**Corrective
Surgery**

Reducing

Pruning

Thinning



Felling

Dismantling

**Hedge
Trimming**

Stump Grinding

Julian Draper NCH Arb

Tel 01428 681978 Mob 07968 827711

forkingbranches@hotmail.com

Allford
Interiors

BESPOKE
CABINET
MAKERS

For beautiful, bespoke, fitted or freestanding furniture, Allford Interiors designs and hand crafts innovative solutions for all our clients.

We collaborate closely with you from conception to completion. Each commission is personally designed, created and installed from our workshop in Milford.

Previous commissions include kitchens, studies, bedroom and bathroom furniture, bookcases and creative storage solutions.

Using solid timber or high-quality man-made materials, we can create anything from traditional shaker style furniture to unique contemporary pieces.

For a free design consultation, contact Stephen Allford on 07723717897 or for more information see www.allford.co.uk

A J Bennewith & Co
CHARTERED ACCOUNTANTS

We are an independent practice that has been offering a personal service for over 30 years

Contact us for all your accounting needs, tax needs and a free initial consultation

**Registered Auditors
Personal Tax Returns
Companies & Charities**

Tel: 01483 539 777
www.bennewith.co.uk





Care in the heart of your own home

Are you or an elderly loved one looking for support at home in **Godalming** or the surrounding areas? Then our local carers are here to help.

Novus Care is regulated by the Care Quality Commission and can provide a qualified carer to support your loved one in their own home from just **30 minute visits to 24/7 live-in care**.

For more information or to arrange a **FREE care assessment** please call: **01483 494132** or email: **hello@novus-care.com**

www.novus-care.com



LOOKING FOR A NEW ROLE?

Nestled within the beautiful & peaceful Surrey countryside, Ladywell Convent is home to the Sisters of Franciscan Missionaries of the Divine Motherhood. A group of Sisters, who have, & continue to dedicate their lives to supporting those in need.

Due to continued growth and the opening of our newly refurbished Franciscan Centre, Ladywell Convent has a number of **job opportunities** available in a range of sectors, including **Care, Maintenance, Hospitality & Administration**.

Ladywell Convent is a vibrant & busy place of work, with around 70 employees. Each of which, support the Sisters, in an environment that offers varied *opportunities and personal growth*.

Get in touch with HR to find out more about our current & upcoming roles, or to submit your CV.



Contact HR
01483 425775 | Recruitment@ladywell.org.uk

Coming up for Prime Time in May and June...



Saturday 13th May—Walk & Lunch

Dig out your binoculars and walking boots for an exploration of one of Surrey's best kept secrets:

Farnham Heath Nature Reserve. Adjacent to the Rural Life Living Museum in Tilford, the Farnham Heath reserve is part of the Surrey Hills Area of Outstanding Natural Beauty. Once a gloomy conifer plantation, since coming into the RSPB's ownership in 2002 it has been transformed into a beautiful heathland that is once again abundant with wildlife and from where you can observe stunning views across the Weald. We have timed our walk to coincide with bluebell season; so expect to be treated to a blue haze stretching before us from the sheets of bluebells among the chestnut coppice. At this time of year too, the chirping of field crickets can be heard at various places on the heath and the calls of early breeding birds filling the air; particularly the 'lulu' call of the woodlark. The walk will be followed by lunch at The Market Garden Café at the Rural Life Living Museum.

Thursday 29th June—Garden Party at Prior's Field School

By kind invitation of the staff and students at Prior's Field School, Prime Time members are invited to join them in the school's Rose Garden on the afternoon of Thursday 29th June for the annual Prime Time Garden Party, which as per previous years will include a programme of musical entertainment performed by our hosts. This has become one of the highlights of the Prime Time year and is a wonderful opportunity to catch up with Prime Time friends that you may not have seen for a while (as well as enjoying a cream tea in the beautiful grounds of the school!).



MONTHLY
**Hearing
Aid
Clinics**
are back!

Fridays 2-4pm

12th May, 9th June and 14th July in the Old Rectory, Busbridge Church. Free adjustment, service and replacement batteries. Open to all! Users of NHS-issued hearing aids can now collect replacement batteries from the Yew Tree Café at any time when the café is open. This is an extension of the existing Hearing Aid Clinics run by BHC as part of the Diocesan Hear Here! project.

The new Hearing Aid Clinic at Godalming Library is on the 3rd Monday morning of every month between 10:30 and 12:30.

The monthly **Movie Matinee**

screenings are taking a break for the summer. We promise they will be back in the autumn though! The first Movie Matinee of the 2023/24 season will take place on Saturday 7th October.

Regular **Coffee Drop-In** sessions take place in the **Yew Tree Café** every Monday morning between 10.30 and 11.30am. No need to book ahead for these sessions, just come along and enjoy the chat and good company. A member of the Prime Time Team will always be there to welcome you.

For further details regarding Prime Time or to book onto any Prime Time event, please contact the Prime Time Team via the Church Office on 01483 421267 or email primetime@bhcgodalming.org



COME AND SING DAY featuring the Vivaldi Gloria

Saturday 20th May 2023
Godalming United Church,
Bridge Road Godalming GU7 3DT
Registration: 12.30pm
Singing: 1-5pm
Tickets £15 online at
www.godalmingchoral.org.uk

enquiries: e-mail the chairman
julianhubble@hotmail.co.uk

BARRA PILATES

strength flexibility posture balance

Tuesdays

09:15 mixed ability
10:30 functional health

Fridays

13:00 mixed ability



Busbridge Village Hall GU7 1XA

- Small classes
- Easy parking
- Contact me to book

Private Instruction

Focus on your specific needs through an individual programme or team up with a friend.



07944 076004
barrapilates@gmail.com
www.barrapilates.co.uk



My
Personal
Fixer



**Time Poor?
Too much Life Admin?
Need help getting through your
to-do list
I can help create time for you**

Get in touch

info@mypersonalfixer.com

07985 499 197

www.mypersonalfixer.com

[mypersonalfixer](#)

Computer Repairs



- ✓ Desktop & Laptop Repairs
- ✓ Wireless & Wired Networking
- ✓ PC Upgrades & Tune Ups
- ✓ Virus & Spyware Removal
- ✓ Data Backup & Recovery
- ✓ Server Support



ONSITE REPAIR OR COLLECTION
PROFESSIONAL AND RELIABLE SERVICE
RESIDENTIAL & BUSINESS CUSTOMERS ARE WELCOME



WE ALSO BUY OR REPAIR YOUR



BROKEN IPADS &
MACBOOK LAPTOPS



REASONABLE PRICES AND FAST TURNAROUND



07809 401721



01483 419468



www.TechGuy.biz



michael@TechGuy.biz



'Come away and rest for a while.'
(Mark 6.31)

The Franciscan Centre Ladywell is open for anyone seeking some space and quiet time.



We offer retreats, quiet days, spiritual direction and workshops.

Please contact us to book or for further information

Tel: 01483 675575

Email: franciscancentre@ladywell.org.uk

Address: Ashstead Lane, Godalming, Surrey, GU7 1ST, UK

www.franciscancentre.org.uk

Charity Number: 1199520

RB Carpentry & Joinery



Cabinetry,
Carpentry &
Joinery

Kitchen Fitting

General Property
Maintenance

40 years
experience

References
available

Busbridge based

Contact :
Rob Beasley

0797 7944162

Fed up with Ironing? Let the Ironing Fairy do it for you!



You are not alone!

Ironing is the most dreaded household chore. We regularly heard people wishing for a "ironing fairy" to take it off their hands, which is why we started our business.

Why choose us?

- ✓ Free collection & delivery
- ✓ Turnaround in 48 hours
- ✓ Professional service

We can work around you

Whether you require a regular weekly or 'on demand' ironing service.



01483 428044



07809 401794

www.ironingfairy.net



We're delighted that **Laura Mead**, Church Engagement Fundraising Officer for **Christian Aid**, is coming to talk to us on **Thursday 4th May**. The Christian

Nexus
linking church & community



Aid charity aims to end poverty and injustice worldwide by working in partnership with local organisations, as well as with governments and the private sector.

Laura is going to tell us about their fantastic **Pigeon Pea Project** in **Malawi**. This project gives women in remote communities in Malawi the confidence and skills to start up small businesses. This, in turn, helps the women support their families and their local community. It's an intriguing title, so do come along and find out more. You're welcome to bring friends.

June is when gardens are looking at their best! We are planning a **visit to an NGS garden** on **Thursday 1st June**, but which particular garden hasn't been confirmed at the time of writing. You'll be able to get details in due course from the church website: bhcgodalming.org. It's always a pleasure to stroll around these gardens, with a friendly local pub meal to enjoy afterwards. So put the date in your diary and join us on, we hope, a warm and sunny evening.



Another date for your diary: on **Thursday 6th July**, **David Harrison**, Project Co-ordinator and **Alice Ummat**, Visitor Operations and Experience Manager for **Winkworth Arboretum** will come and tell us about progress on the **New Winkworth Visitor Centre**. It should be well under way by then! It will be great to hear about these developments at our well-loved local arboretum.

With the exception of the garden visit, we'll meet in the **Old Rectory** at **8.00pm**. The evening will start with drinks and nibbles to give us a chance to mingle and meet new people before handing over to our speakers for their presentations.

All are welcome! We look forward to seeing you!

Refreshments to start - 2023 Annual subscription £20; Guests £5 contribution towards speaker costs.

Our 2023 charity is: **Milford Hospital League of Friends**

For more information, please contact:

janetmharvey@btinternet.com or katekaye2@btinternet.com

Nexus – building a network of friendship and support between church and community

Busbridge Infant School PTA

Summer Fete

Sat 1 July
12-3pm

- ★ Splat the Rat
- ★ Raffle
- ★ Hook a Duck
- ★ New/used toys and much more...
- ★ Coconut Shy
- ★ Bouncy Castle
- ★ Bottle Tombola
- ★ Ice Creams

Join us for a fun-filled family day out. Enjoy live entertainment and try your luck at traditional fair stalls. Grab some tasty BBQ food and enjoy refreshments from our bar.

**BUSBRIDGE INFANT SCHOOL
HAMBLEDON ROAD
GODALMING GU7 1PJ**

Sponsored by

Hamptons
THE HOME EXPERTS

From the Archives - Mother's Union 1960

Martyn Sandford has been working hard to digitise some of the photos in the church's archives. Does anyone recognise any of these people? Please email the Editor (see p38 for the address)



Cranleigh Tiles & Bathrooms

246 High Street, Cranleigh, GU6 8RL



Whatever the budget, from non-branded basics and essentials to more sophisticated designer products, our family-run bathroom showroom led by Craig Cooper is here to help. We offer free, no obligation estimates and advice on everything bathroom related.

Bathroom Essentials • Showers • Toilets & Washbasins • Baths
Wet Rooms • Lighting • Tiles & Flooring
Design & Installation Available

Open 9.00am to 5.00pm Monday to Friday
Please ring to make an appointment

Saturdays 9.00am to 12.00pm
By appointment only

Telephone 01483 272727 or 07539 145513
craig@cranleighbathroomstudios.co.uk
www.cranleighbathroomstudios.co.uk



CHILDREN'S COME AND SING MORNING

Free - no need to book
SAT 20 MAY 10 (prompt) - 11:30

Godalming United Church GU7 3DU

*Sing for fun with professional
musicians
Children from Year 2 up,
accompanied by a parent/carer*

*For more information email
gcc@godalmingchoral.org.uk*



Enriching the lives of people with disabilities



Thursdays 10:30
Godalming United
Church,
Bridge Road,
GU7 3DU
www.conquestart.org

We believe that everyone has a creative spark in them – and that this creativity can bring relaxation and the satisfaction of achievement.

Could you spare a couple of hours – not necessarily every week - to come and help our friendly group? No need for artistic experience required – just an interest in people and a willingness to lend a hand. Or get creative and come to make pictures!

Why not come along and meet us – have a cuppa, see what we do and join in.

01483 414778

nhmwilks@gmail.com



**Donline offers professional
computer engineering services to:
Small Business, Home Office, &
Home Users.**

**Donline can assist with all of your
IT requirements: Supply & installation of
hardware and software, upgrades,
networking, system and data recovery,
printing, security, cloud computing,
technical support and training.**

Call: Don Tocher, on
07870-643486 or 02392-989594



Or contact Donline, online:
Web: www.donline.co.uk
Email: don@donline.co.uk

R. & R. Roofing

Guildford

Roofing Contractor & General Builder



- NEW ROOFS & REPAIRS
- CHIMNEY POINTING & REBUILD
- SLATING • TILING
- HIGH PERFORMANCE TORCH-ON FELTS
- FLAT ROOFS • LEAD WORK
- GUTTERING • uPVC FASCIAS & SOFFITS
- EXTERIOR MAINTENANCE

FREE ESTIMATES EMERGENCY SERVICE

01932 344660

07956 554604

7 Rivermead Byfleet KT14 7BZ

Email: russ@rr-roofing.co.uk

busbridge&hambledonchurch 

Help & Support

Financial Relief

Our church charity CFSF (Church Family Support Fund) has been giving financial gifts to people in need and are always grateful to know of anyone in the wider community needing this support. See www.bhcgodalming.org/c19-givingandsupport or call 01483 421267 to let us know of someone in confidence.

Abuse Support

Call Surrey Against Domestic Abuse 01483 776822 – safety number; if you would prefer to make a call to the church (01483 421267), then we'd be willing to take some discreet information for you and act with you.

If your situation is threatening please call 999.



Life issue events to be held at Godalming Baptist church

(see also <https://www.godalmingbaptistchurch.org.uk/events>)

Managing Anger and Conflict: Saturday 24th June 10.00am-12.30 led by Revd Peter Jackson. Do you ever get angry? What sort of things make you angry? Can we ever be 'anger-free'?

Do you, or anyone you know, have an issue with unresolved anger? How does this affect you and the people around you?

Please contact Sally Pollard-01483-428646 or e-mail pollard3@hotmail.co.uk for more information or to reserve a place (by 16th June).

DAVE MOSELEY PAINTER AND DECORATOR

Interior and Exterior decorating
Qualified with over 30 years' experience

Mobile : 07774 132003
Telephone:- 01483 300891
Email: dmosley59@hotmail.co.uk



www.busbridgedesignbuild.co.uk

07968 022526

Your local firm, specialising in high quality new-builds, extensions, refurbishment and all other aspects of building works

Offering exceptional levels of service & attention to detail at competitive prices

Excellent local references and referrals

Contact us today for a quotation or to discuss your requirements

BUSBRIDGE EVENING WI

Our monthly meetings are held on the 2nd Tuesday of each month in Busbridge Village Hall. We have various activities including coach tours, garden clubs and many more. Meetings will start at 8pm. New members welcome. Contact: Ann Heward 01483 420360

Tuesday 9th May: Talk by Dr Neil Stanley "An Independent Sleep Expert" a Lecturer on various aspects of sleep to healthcare Professionals.

Tuesday 13th June: "Hand bell ringing Duo" - Sandra and Angela - enjoy some musical fun for our birthday.

Small Ads

GARDENER TRAINED WITH THE RHS, HARD WORKING AND RELIABLE. Will undertake weeding, pruning, mulching and bed work plus more from £25 per hour and medium hedge cutting service priced per job. Contact Matthew on **01483 421547**

SWIM COACH Swim England Qualified, Level 2 Coach & Teacher, Level 2 Open water, Channel Swim coach, Masters 18+ Club. All ages and levels welcome. RLSS Lifeguard. Based at St Catherine's school, Bramley **07592689059**.

info@surreyopenswim.co.uk

BABYSITTER/ DOG WALKER Teenage girl available for late afternoon, evening and weekend for dog walks and babysitting. £5/ dog walk or £5/hour. Fund-raising for a conservation trip! Contact **Mel at 07821 581040**

Artists, are you looking to promote your music?

We offer a variety of services, including

- Social Media Marketing
- Video Editing (eg. Lyric Videos)
- Design
- Content Creation

Email info@tonescreative.co.uk
Text +44 7754 932051

tones™

PC Doctor Godalming

Fixing computers of all shapes and sizes

If your computer is run down, unreliable and generally out of sorts then why not call for professional help and advice in your own home. All types of computer or network problems dealt with on a "No Fix No Fee" basis.



79 Pullman Lane, Godalming, GU7 1YB
Tel: 01483 424378 | 07876476990
email to: mike.lagan@pcdocgo.co.uk



Free valuations every weekday:
9am-5pm

Ewbank's



Surrey and Hampshire's Premier Antique and Specialist Auctioneers



Upcoming Auctions:

- Pre-loved, Vintage & Antiques: 3 May
- The Cinema Poster Collection: 5 May
- Trading Cards: 17 May
- The Restorer's Sale: 18 May
- The Jonathan Richard Turner Studio Collection: 19 May
- Toys & Models: 24 May
- Entertainment & Memorabilia: 25 & 26 May
- Pre-loved, Vintage & Antiques: 31 May
- Magic the Gathering: Modern Era, 2003-2020: 1 June
- Retro Games & Consoles: 2 June
- The Football Auction: 9 June
- Country House Sale - The contents of Munstead Wood: 20 June
- Jewellery, Watches & Coins: 21 June
- Silver & Fine Art: 22 June
- Cars, Motorbikes & Automobilia: 30 June

01483 223101

info@ewbanks.co.uk www.ewbanks.co.uk

Burnt Common Auction Rooms, London Road, Send, GU23 7LN

Many of BTA's activities are gearing up for the summer season, from regular club nights to coaching, tournaments and friendly matches with other local clubs. New members are very welcome and can join at www.busbridgetennis.co.uk. One fun activity to particularly highlight is the Thursday afternoon Beginners & Improvers Group 'BIG' (previously Therapy Tennis) sessions led by John Lapworth and Asit Gupta every Thursday from 2-4pm.

BUSBRIDGE
TENNIS
ASSOCIATION



Godalming MUSEUM

Godalming Museum Exhibition "Our Other Mother"
runs from 4th to 31st May

The Mayor of Godalming's charity, "What Next" has involved the people of Godalming in an art project called "Our Other Mother". The artworks express how people feel about Planet Earth as our other Mother. Famous artists and illustrators have provided materials to stimulate creators on this theme, and local people have made their

own contributions to the exhibition.



From 14th June to 9th July Broadwater and Charterhouse Schools will again stage a joint exhibition of work displaying the talents of their art students.

Godalming Museum opening times are Wednesday to Saturday 10am to 4pm, and Sunday 11am to 3pm. Please check the website www.godalmingmuseum.org.uk or ring 01483 426510 in opening hours for further details.

Do visit the hidden garden behind the Museum which is always of interest. The planting is in the style of the famous gardener, craftswoman and artist Gertrude Jekyll, who lived at Munstead and designed gardens locally and further afield. She is buried in the churchyard of Busbridge Church. There is also a gallery at the museum which focuses on Jekyll and the Arts and Crafts movement.

Note from the Editor: (Photo credits) Grateful thanks to Godalming Museum for providing the photos of Godalming college, Old Rectory and Brighton road on page 6 of the March / April 2023 edition of The Bridge for the Busbridge History Walk article.

We ask you to please make sure that those people who are the focus in photos have given their consent to be included in our publication and on our website; in the case of minors we ask that this is parental consent. "The Bridge" would like to thank advertisers for their support, but to make clear to readers that it does not offer any endorsement of the goods or services advertised. Views expressed in the articles are not necessarily those of the Editor or Busbridge Church. The Editorial Team reserve the right to edit any articles submitted for consideration for publication.

EDITORIAL TEAM

David Brockman (Editor)
Jacky Beale (Small Ads) 423768
Christine Payne 417320
Lorna Sherwin
Gemma Taylor
Emilia Guerra

Contact the Editor:
editor.atthebridge@gmail.com
Contact the Treasurer:
bridgetreasurer@bhcgodalming.org

**Copy Date for next edition:
Wed 14th June**

Write to us:
c/o Church Office, The Old Rectory, Old
Rectory Gardens, Godalming GU7 1XB.

Rector: Rev Simon Taylor 421267

Advertising

DISPLAY ADVERTISING is for businesses who wish to advertise in full, half, quarter or eighth page format.
Contact: editor.atthebridge@gmail.com

SMALL ADS are designed to advertise local services. £5 per insert, 40 words maximum. For Sale items £2, 20 words maximum. Please contact Jacky at: jackybeale@hotmail.com

We deliver free of charge to over 1900 local homes. For more information, please contact:
editor.atthebridge@gmail.com

*Professional, confidential &
sympathetic counselling*

Gill Brennan

MBACP (Accred), FdA (Hons), BA (Hons)
07947 424 538
gillhbrennan@gmail.com

www.godalmingcounsellor.com



Vanessa Edwards Hypnotherapy

Cognitive Hypnotherapist
DipCHyp, NLP, (Master Prac) HPD, MNCH,
CNHC Reg.

www.vanessaedwardshypnotherapy.co.uk
info@vanessaedwardshypnotherapy
07523101952

I specialise in helping women, young adults and teenagers with the following conditions:

anxiety, stress, depression, confidence, low self-esteem, weight loss, menopause management, trauma, sleep issues, smoking, fears and phobias.



Looking to maintain your independence?
Your local home care agency is here to help



carers at home
maintaining your independence

Rated 'outstanding' for care by the Care Quality Commission

Call us today on
01483 899350

Registered office
Maple Suite
Guardian House
Borough Road
Godalming
GU7 2AE

Carers at Home Limited.
Registered in England & Wales no. 05938034

 [@carersathomeuk](#)

 [@atcarers](#)

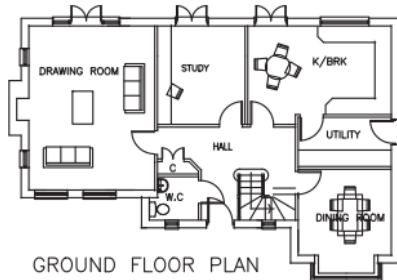
 [@carersathomeuk](#)

[carersathome.com](#)
info@carersathome.com

Carers at Home is registered with the Care Quality
Commission - CQC Provider ID 1-101644741



FRONT ELEVATION



GROUND FLOOR PLAN

PLANNING & DESIGN SERVICE LLP

Architectural drawings for
Extensions, Alterations &
New Build

Free No Obligation Quotations

Tel: 01483 417555
Mob: 07818 014357

www.architecturesurrey.co.uk
simonplanning.design@btinternet.com



Russell's Hedges & Tree Care Services

**Tree felling • Reductions • Pruning • Crown Lifting
Thinning • Hedges • Stump Grinding**

Fully Qualified & Insured

Member of Checkatrade

Russell Beddard

Tel: 01483 208161 Mob: 07722 506720

Email: rsgservices@outlook.com